

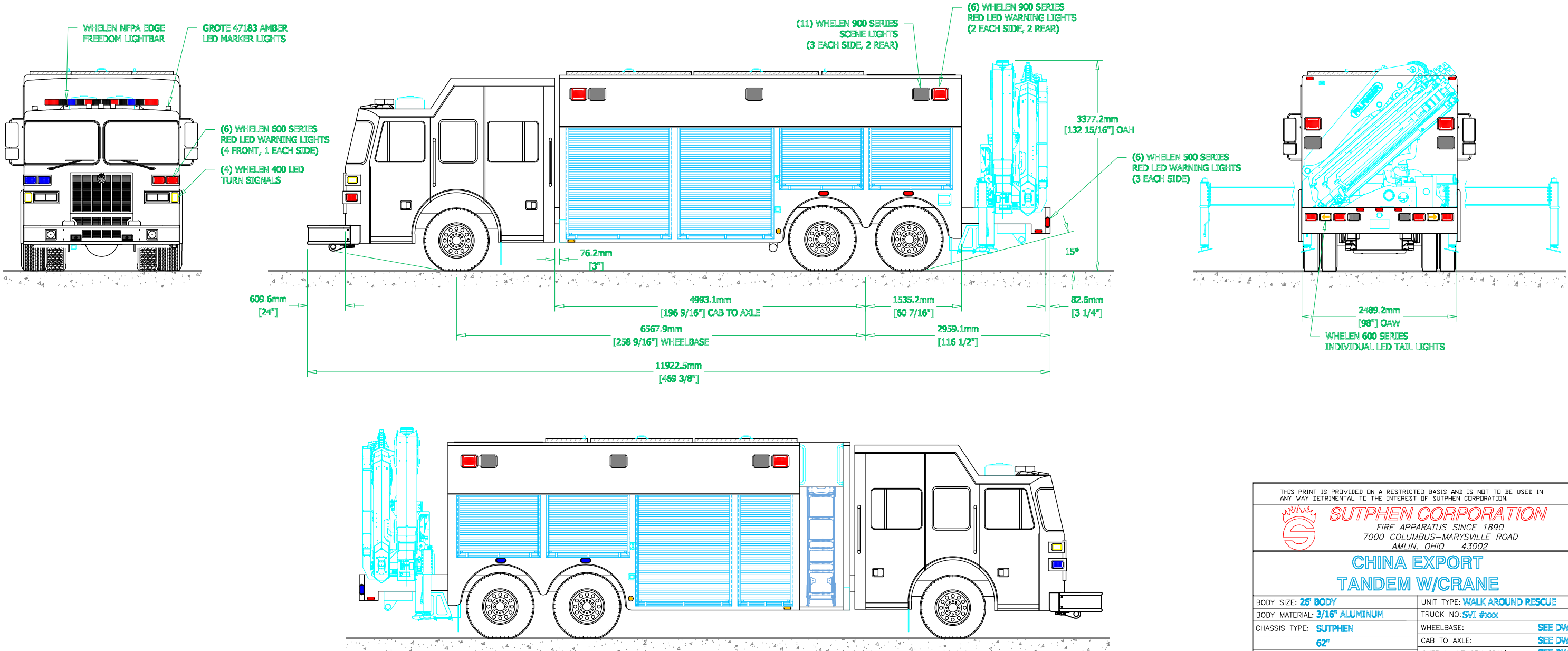
PRELIMINARY DRAWING - FOR LAYOUT PURPOSES ONLY


REVISIONS			
REV	DESCRIPTION	DATE	BY

NOTE 1: Do not scale drawing. This drawing is for general truck configuration only. All items and dimensions shown are approximate and may vary with final production. The drawing may not provide illustration for all items in the specification. In all situations where the drawing may contradict the specifications, the specifications shall prevail. This drawing and all data herein are provided as confidential materials and shall not be reproduced without written consent of the manufacturer.

NOTE 2: Chassis frame height will change due to axle characteristics, loading and tire dimensions which will effect the overall height dimension shown. Any overall height restrictions should take this into consideration and allow approximately 2-3 inches of tolerance.

ROOF TOP COMPARTMENTATION		
COMPARTMENT	DOORS	VOLUME (m)
RT1	SLAM DOOR	1.005
RT2	SLAM DOOR	0.989
RT3	SLAM DOOR	1.11
RT4	SLAM DOOR	0.812
RT5	SLAM DOOR	0.818

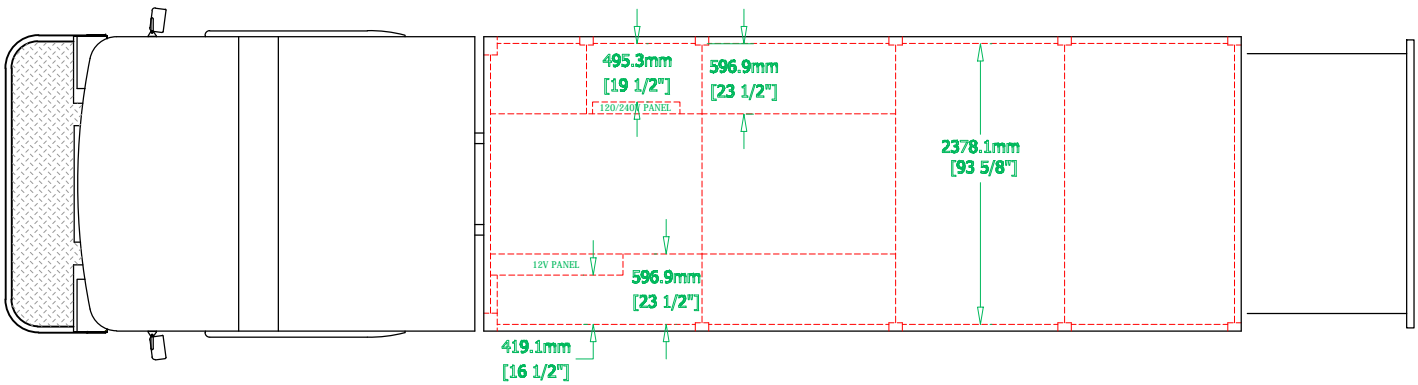


THIS PRINT IS PROVIDED ON A RESTRICTED BASIS AND IS NOT TO BE USED IN ANY WAY DETRIMENTAL TO THE INTEREST OF SUTPHEN CORPORATION.			
<div><div>SUTPHEN CORPORATION FIRE APPARATUS SINCE 1890 7000 COLUMBUS-MARYSVILLE ROAD AMLIN, OHIO 43002</div></div>			
<div>CHINA EXPORT TANDEM W/CRAVE</div>			
BODY SIZE: 26' BODY		UNIT TYPE: WALK AROUND RESCUE	
BODY MATERIAL: 3/16" ALUMINUM		TRUCK NO: SVI #xxx	
CHASSIS TYPE: SUTPHEN		WHEELBASE: SEE DWG	
62"		CAB TO AXLE: SEE DWG	
20" RR		OVERALL LENGTH (OAL): SEE DWG	
FOUR DOOR		OVERALL WIDTH (OAW): SEE DWG	
		OVERALL HEIGHT (OAH): SEE DWG	
DRAWN BY: HJR		DATE: August 6, 2015	
DRAWING NO: China_Crane_Prelim5 - metric		SCALE: 1/4" = 1'-0"	
		SHEET 1 OF 2	

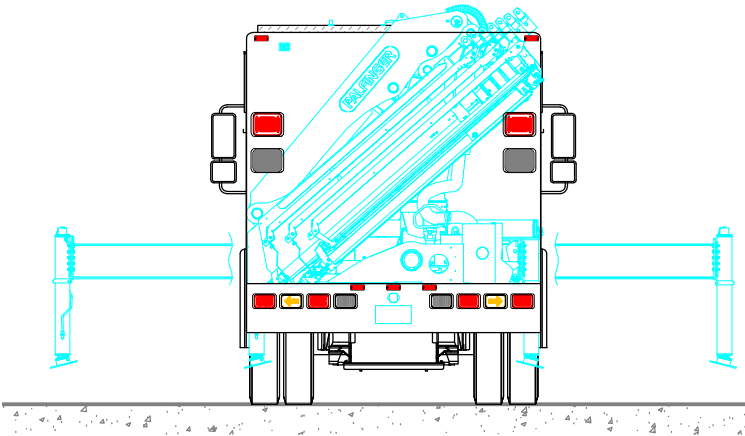
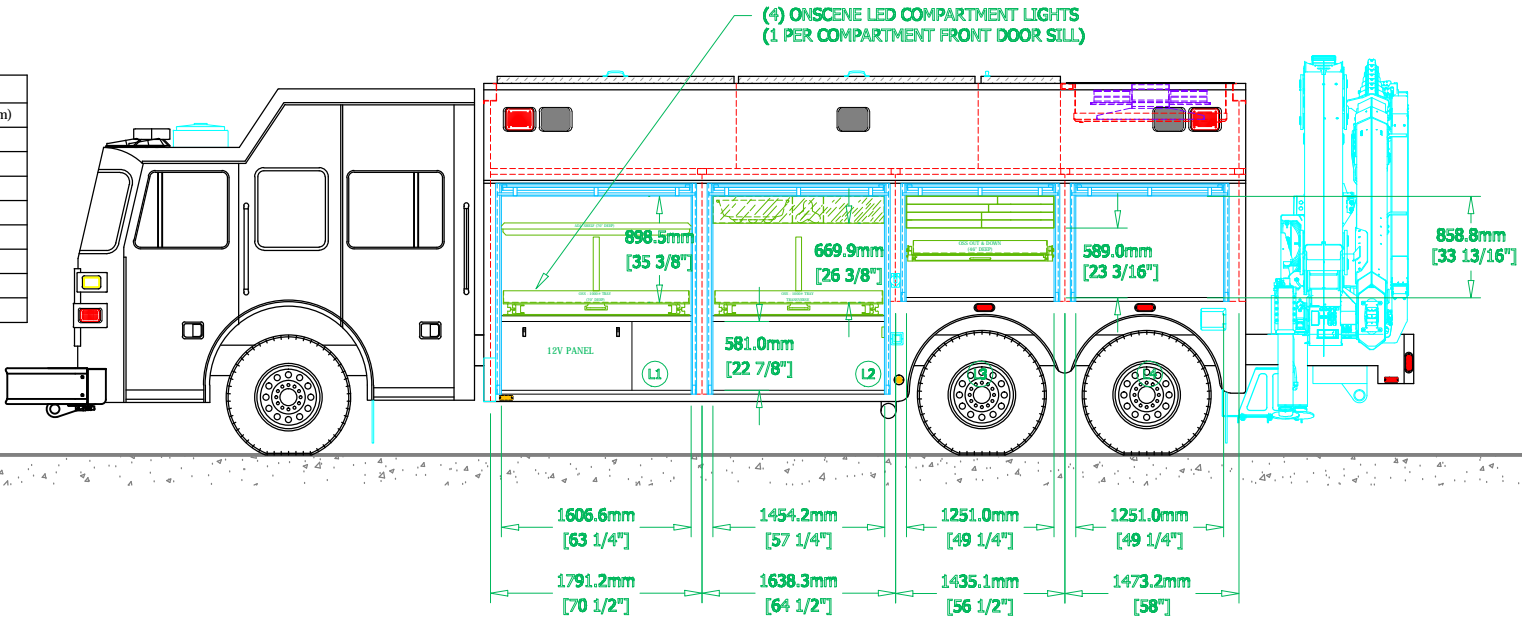
PRELIMINARY DRAWING - FOR LAYOUT PURPOSES ONLY

REVISIONS			
REV	DESCRIPTION	DATE	BY

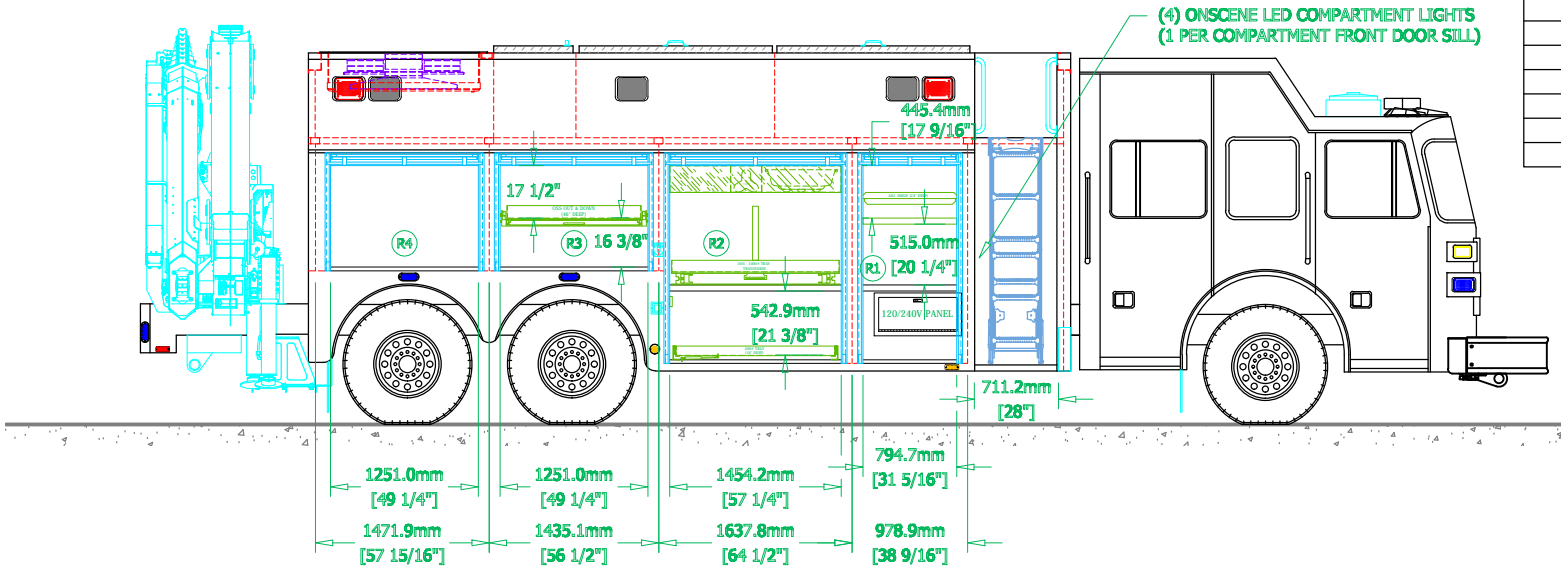
NOTE 1: Do not scale drawing. This drawing is for general truck configuration only. All items and dimensions shown are approximate and may vary with final production. The drawing may not provide illustration for all items in the specification. In all situations where the drawing may contradict the specifications, the specifications shall prevail. This drawing and all data herein are provided as confidential materials and shall not be reproduced without written consent of the manufacturer.




LEFT SIDE COMPARTMENTATION		
COMPARTMENT	DOORS	VOLUME (m)
L1	ROLL-UP	3.197
L1 (LOWER)	ROLL-UP	0.556
L2	ROLL-UP	3.882
L2 (LOWER)	ROLL-UP	0.626
L3	ROLL-UP	2.862
L4	ROLL-UP	2.862



RIGHT SIDE COMPARTMENTATION		
COMPARTMENT	DOORS	VOLUME (m³)
R1	ROLL-UP	0.603
R1 (LOWER)	ROLL-UP	0.342
R2	ROLL-UP	3.882
R2 (LOWER)	ROLL-UP	0.626
R3	ROLL-UP	2.862
R4	ROLL-UP	2.862



THIS PRINT IS PROVIDED ON A RESTRICTED BASIS AND IS NOT TO BE USED IN ANY WAY DETRIMENTAL TO THE INTEREST OF SUTPHEN CORPORATION.			
<div><div><div>SUTPHEN CORPORATION</div><div>FIRE APPARATUS SINCE 1890</div><div>7000 COLUMBUS-MARYSVILLE ROAD</div><div>AMLIN, OHIO 43002</div></div></div>			
CHINA EXPORT TANDEM W/CRANE			
BODY SIZE: 26' BODY		UNIT TYPE: WALK AROUND RESCUE	
BODY MATERIAL: 3/16" ALUMINUM		TRUCK NO: SVI #xxx	
CHASSIS TYPE: SUTPHEN		WHEELBASE: SEE DWG	
62"		CAB TO AXLE: SEE DWG	
20" RR		OVERALL LENGTH (OAL): SEE DWG	
FOUR DOOR		OVERALL WIDTH (OAW): SEE DWG	
		OVERALL HEIGHT (OAH): SEE DWG	
DRAWN BY: HJR		DATE: August 6, 2015	
DRAWING NO: China_Crane_Prelim5 - metric		SCALE: 1/4" = 1'-0"	
		SHEET 2 OF 2	