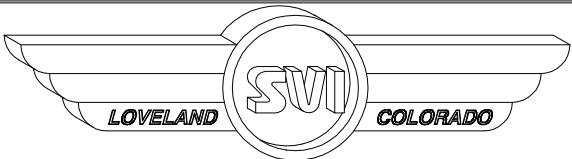
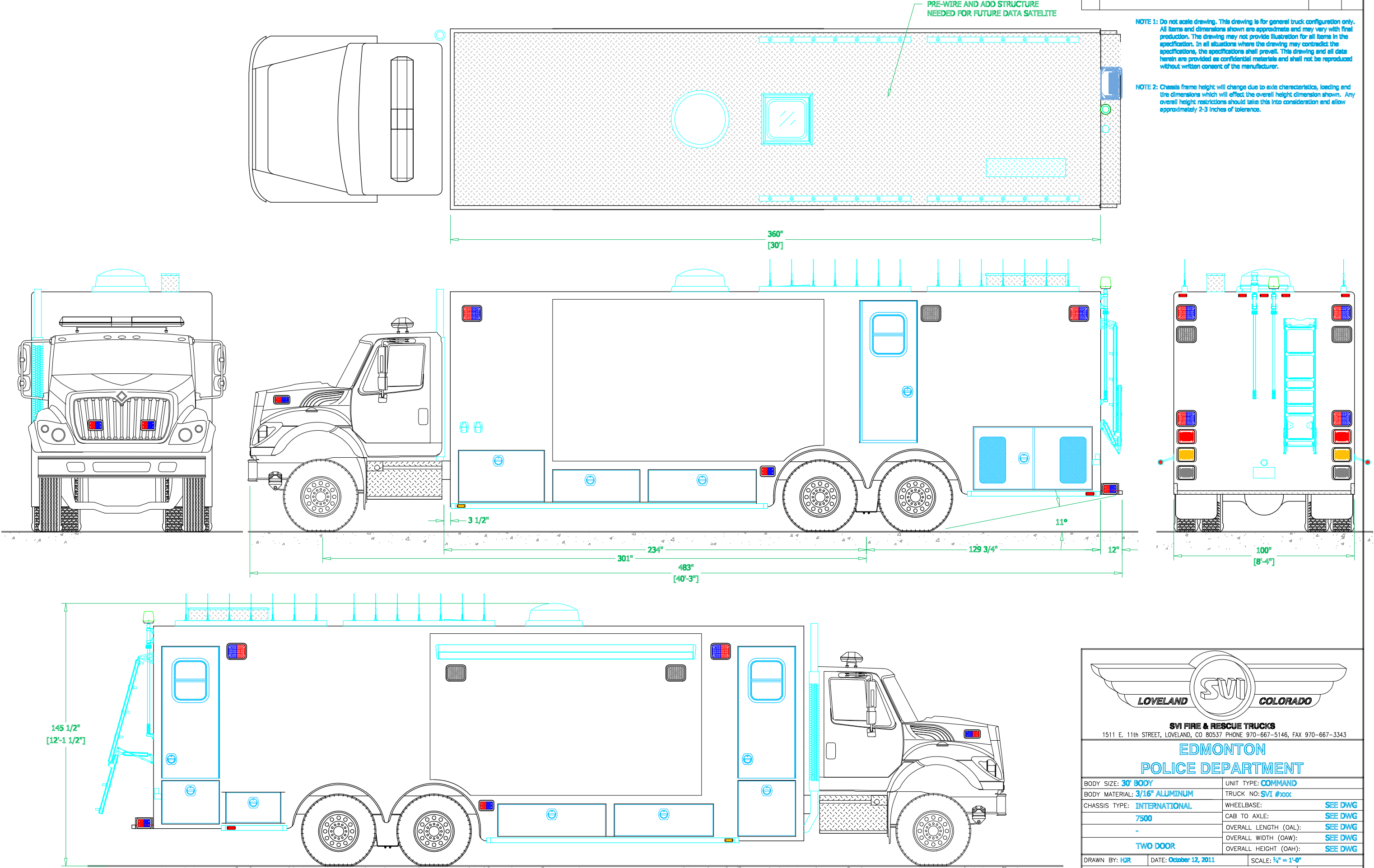


PRELIMINARY DRAWING - FOR LAYOUT PURPOSES ONLY

REVISIONS			
REV	DESCRIPTION	DATE	BY

NOTE 1: Do not scale drawing. This drawing is for general truck configuration only. All items and dimensions shown are approximate and may vary with final production. The drawing may not provide illustration for all items in the specification. In all situations where the drawing may contradict the specifications, the specifications shall prevail. This drawing and all data herein are provided as confidential materials and shall not be reproduced without written consent of the manufacturer.

NOTE 2: Chassis frame height will change due to axle characteristics, loading and tire dimensions which will effect the overall height dimension shown. Any overall height restrictions should take this into consideration and allow approximately 2-3 inches of tolerance.



SVI FIRE & RESCUE TRUCKS
1511 E. 11th STREET, LOVELAND, CO 80537 PHONE 970-667-5146, FAX 970-667-3343

EDMONTON
POLICE DEPARTMENT

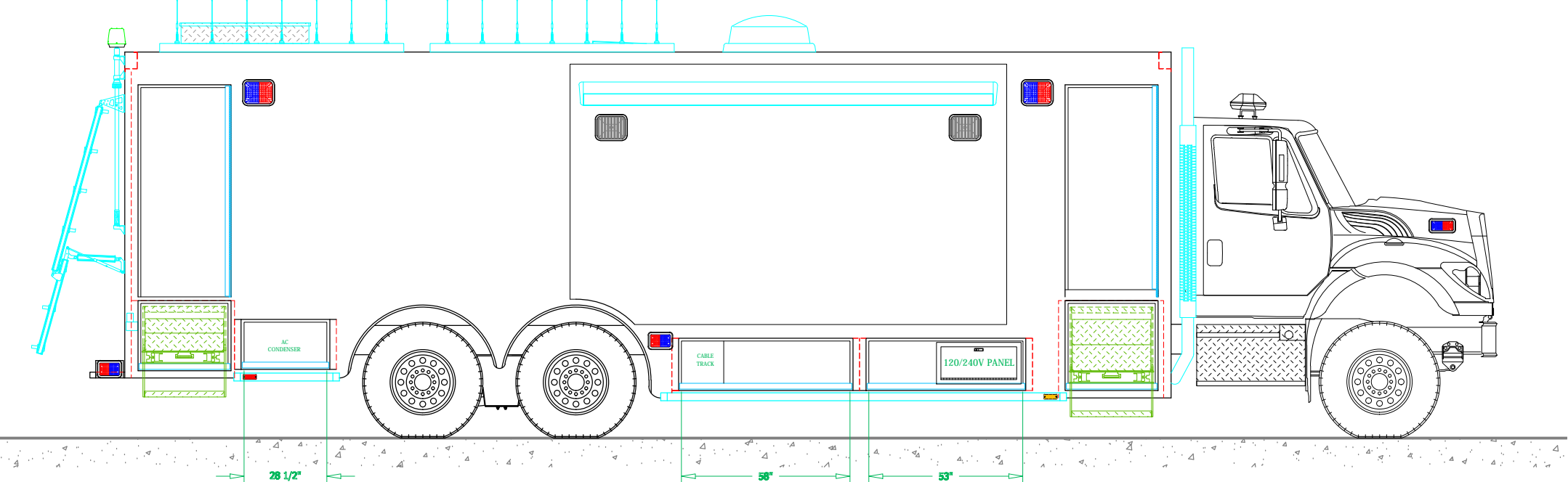
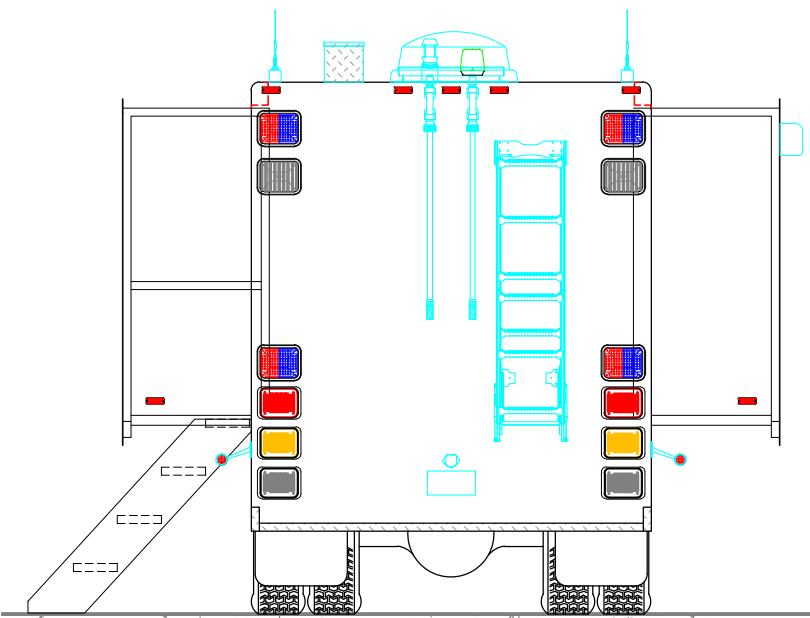
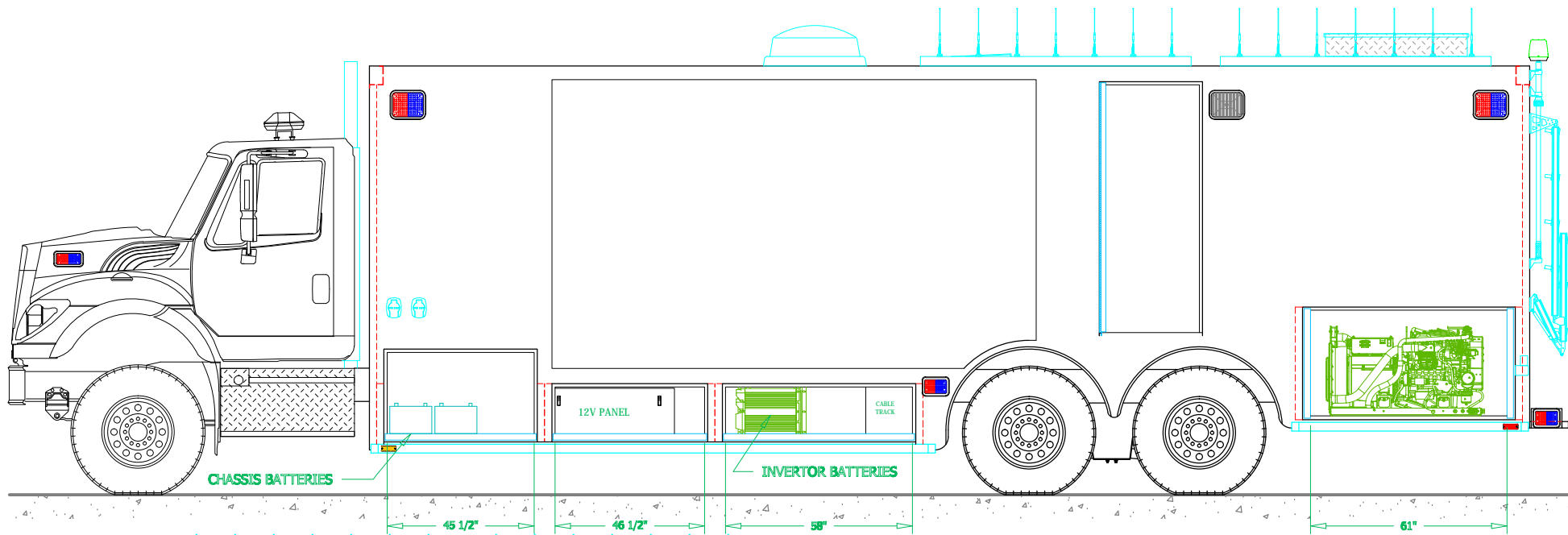
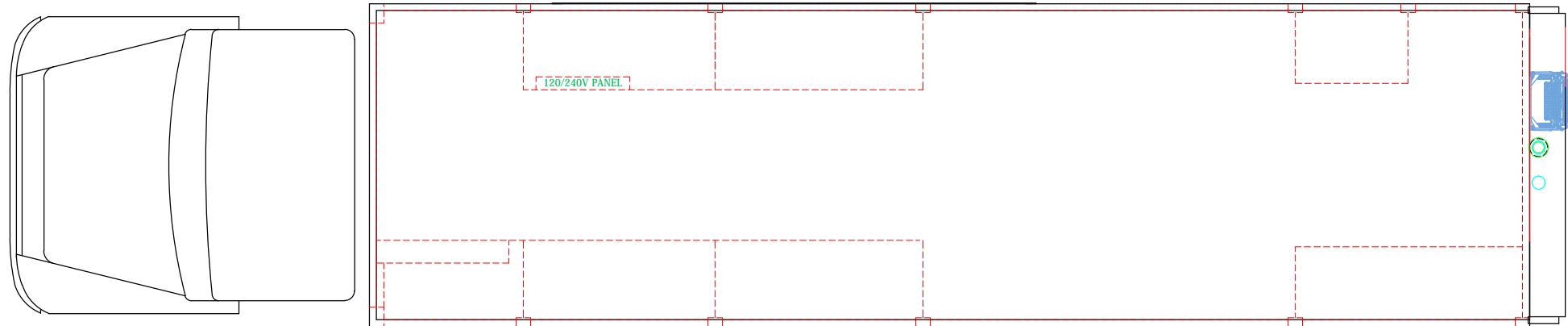
BODY SIZE: 30' BODY	UNIT TYPE: COMMAND
BODY MATERIAL: 3/16" ALUMINUM	TRUCK NO: SVI #xxx
CHASSIS TYPE: INTERNATIONAL	WHEELBASE: SEE DWG
7500	CAB TO AXLE: SEE DWG
-	OVERALL LENGTH (OAL): SEE DWG
TWO DOOR	OVERALL WIDTH (OAW): SEE DWG
	OVERALL HEIGHT (OAH): SEE DWG

DRAWN BY: HJR DATE: October 12, 2011 SCALE: 1/4" = 1'-0"
DRAWING NO: EdmontonPD_ALB_CH_Prelim6 SHEET 1 OF 3

PRELIMINARY DRAWING - FOR LAYOUT PURPOSES ONLY

REVISIONS			
REV	DESCRIPTION	DATE	BY

NOTE 1: Do not scale drawing. This drawing is for general truck configuration only. All items and dimensions shown are approximate and may vary with final production. The drawing may not provide illustration for all items in the specification. In all situations where the drawing may contradict the specifications, the specifications shall prevail. This drawing and all data herein are provided as confidential materials and shall not be reproduced without written consent of the manufacturer.





LOVELAND SVI COLORADO

SVI FIRE & RESCUE TRUCKS
1511 E. 11th STREET, LOVELAND, CO 80537 PHONE 970-667-5146, FAX 970-667-3343

**EDMONTON
POLICE DEPARTMENT**

DRAWN BY: HJR	DATE: October 12, 2011	SCALE: 1/4" = 1'-0"
DRAWING NO: EdmontonPO_ALB_CM_Prelim6		SHEET 2 OF 3

REVISIONS			
REV	DESCRIPTION	DATE	BY

NOTE 1: Do not scale drawing. This drawing is for general truck configuration only. All items and dimensions shown are approximate and may vary with final production. The drawing may not provide illustration for all items in the specification. In all situations where the drawing may contradict the specifications, the specifications shall prevail. This drawing and all data herein are provided as confidential materials and shall not be reproduced without written consent of the manufacturer.

The diagram illustrates a floor plan for a data center aisle. On the left, a large blue trapezoidal shape represents a vehicle, with a green line and the text "CRAWL THRU" pointing to a narrow gap. The aisle is defined by green lines. On the right side of the aisle, there are two rows of server racks. The top row is labeled "DATA RACK W/ 32" DEEP" and the bottom row is labeled "DATA RACK W/ 32" DEEP". A green dimension line indicates a width of "33'" between the racks. The floor is light blue, and the walls are dark blue. There are also some yellow rectangular areas representing other equipment or storage.

Technical drawing of a truck chassis showing interior dimensions. The drawing includes a side profile of the truck with a box body. Dimensions are marked in green and blue. Key dimensions include: 70" for the cab width, 360" for the total length, 203 3/4" for the interior length, 72" for the interior height, 79 3/4" for the exterior height, 67 1/4" for the rear section width, 140" for the interior width, 482 1/2" for the wheelbase, and 40'-2 1/2" for the total length. A label "A/C EVAPORATOR" is shown on the rear section.

A technical drawing showing the front view and cross-section of a building. The building has a central rectangular section and two side sections. A ramp is attached to the left side. A table is placed in the central section. The drawing uses black lines for the main structure, green lines for the cross-section, and blue lines for the table. The text "FRONT VIEW" and "CROSS-SECTION" is written in blue at the bottom right, with a blue circle and crosshair symbol next to it.

This technical drawing shows a side profile of a truck chassis equipped with a mobile office unit. The unit is mounted on a chassis with two large rear wheels and a single front wheel. The office unit features a large window on the left side, a door, and a rear section with four office chairs and two whiteboards. The truck's front cab is visible on the right, and the chassis includes a hitch and a fuel tank. The drawing is a line art representation with color-coded components: green for the office unit's frame, blue for the chairs, and cyan for the chassis and truck body.