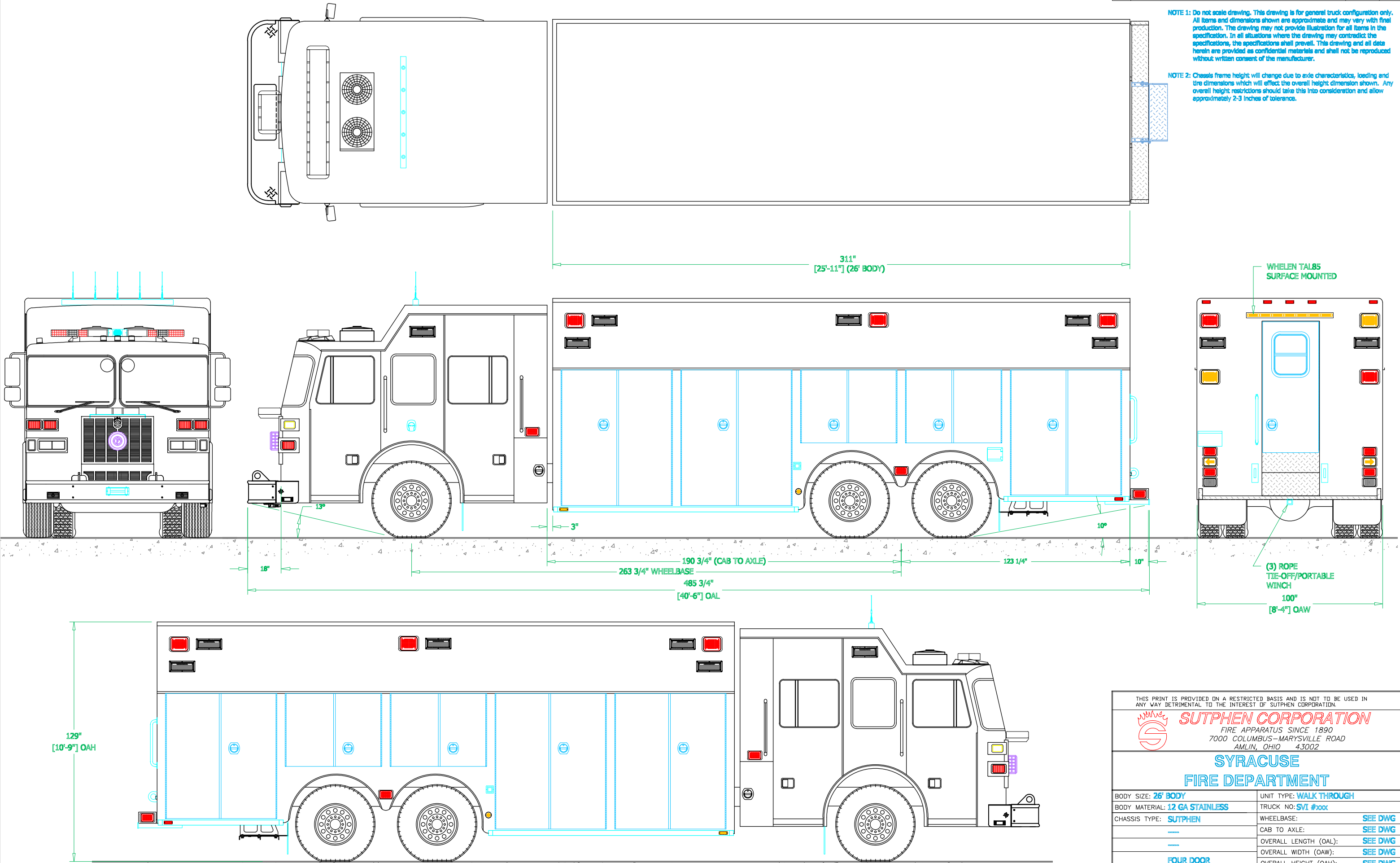



PRELIMINARY DRAWING - FOR LAYOUT PURPOSES ONLY

REVISIONS			
REV	DESCRIPTION	DATE	BY

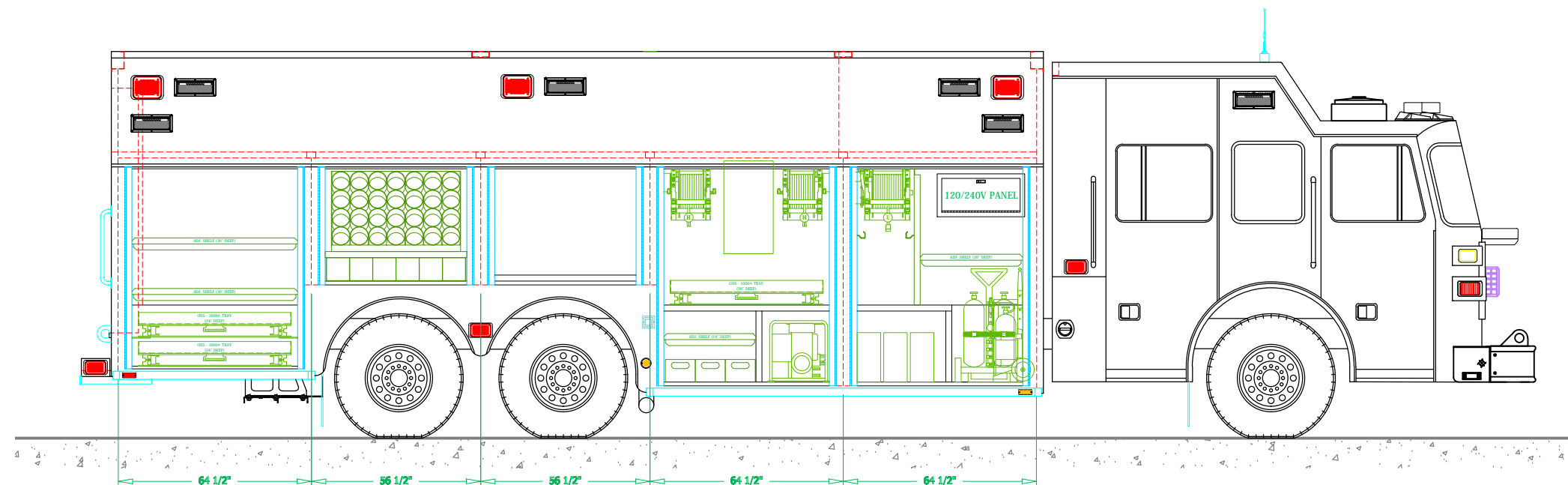
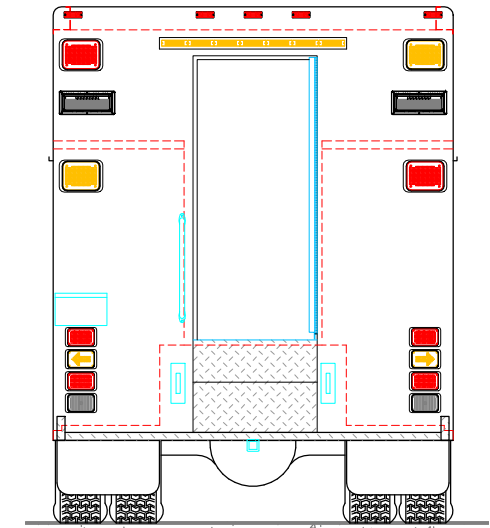
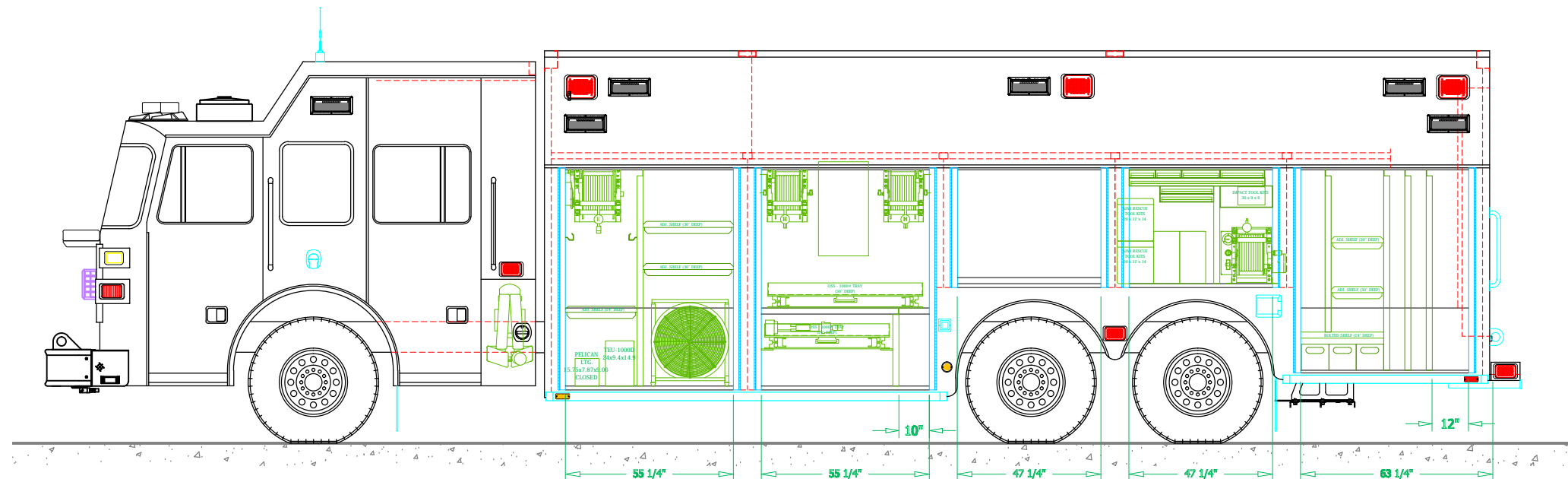
NOTE 1: Do not scale drawing. This drawing is for general truck configuration only. All items and dimensions shown are approximate and may vary with final production. The drawing may not provide illustration for all items in the specification. In all situations where the drawing may contradict the specification, the specifications shall prevail. This drawing and all data herein are provided as confidential materials and shall not be reproduced without written consent of the manufacturer.

NOTE 2: Chassis frame height will change due to axle characteristics, loading and the dimensions which will effect the overall height dimension shown. Any overall height restrictions should take this into consideration and allow approximately 2-3 inches of tolerance.



THIS PRINT IS PROVIDED ON A RESTRICTED BASIS AND IS NOT TO BE USED IN ANY WAY DETRIMENTAL TO THE INTEREST OF SUTPHEN CORPORATION.			
<div><div><div>SUTPHEN CORPORATION</div><div>FIRE APPARATUS SINCE 1890</div><div>7000 COLUMBUS-MARYSVILLE ROAD</div><div>AMLIN, OHIO 43002</div></div></div>			
SYRACUSE FIRE DEPARTMENT			
BODY SIZE: 26' BODY		UNIT TYPE: WALK THROUGH	
BODY MATERIAL: 12 GA STAINLESS		TRUCK NO: SVI #xxx	
CHASSIS TYPE: SUTPHEN		WHEELBASE:	SEE DWG
		CAB TO AXLE:	SEE DWG
		OVERALL LENGTH (OAL):	SEE DWG
		OVERALL WIDTH (OAW):	SEE DWG
FOUR DOOR		OVERALL HEIGHT (OAH):	SEE DWG
DRAWN BY: HJR		DATE: November 15, 2011	
DRAWING NO: Syracuse_NY_WT26_Precon1		SCALE: 1/4" = 1'-0"	
		SHEET 1 OF 3	

REVISIONS			
REV	DESCRIPTION	DATE	BY



FIRE APPARATUS SINCE 1890

SYNOPSIS

SYNOPSIS

SYRACUSE

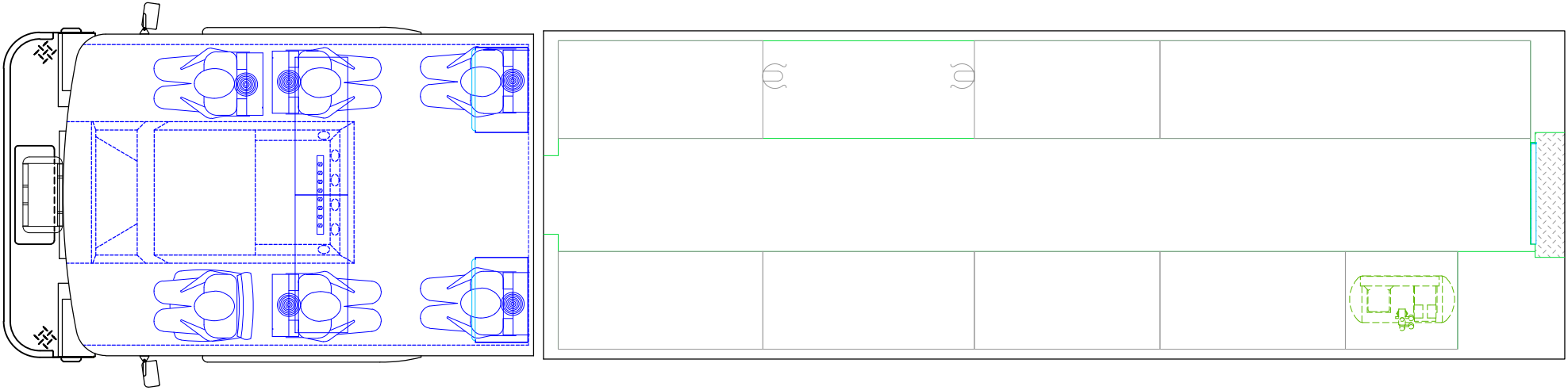
FIRE DEPARTMENT

SCALE: $1/4" = 1'-0"$

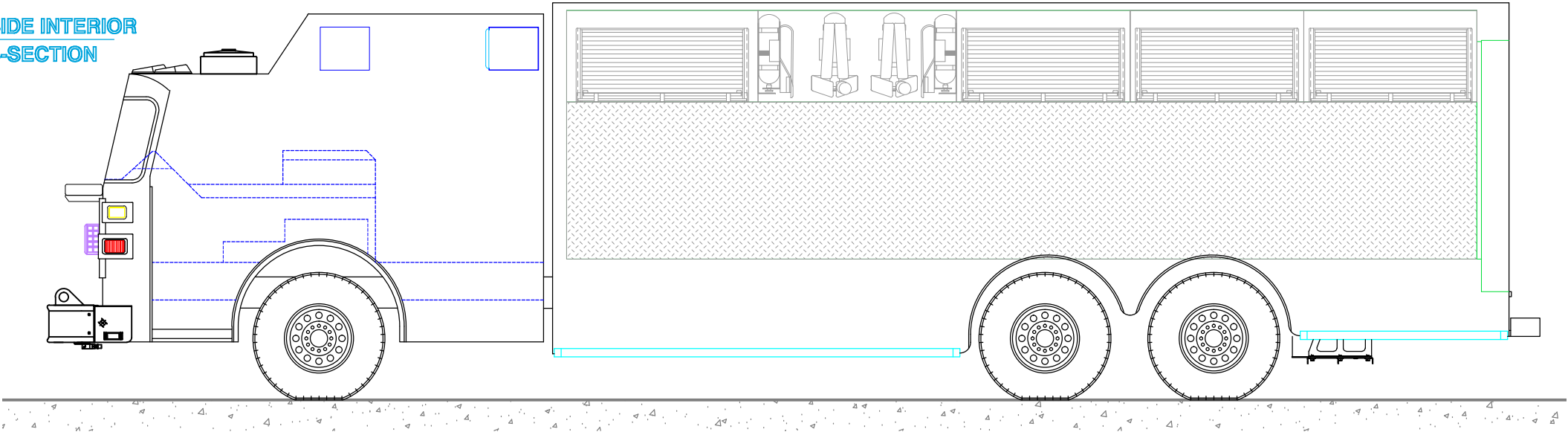
SHEET 2 OF 3

PRELIMINARY DRAWING - FOR LAYOUT PURPOSES ONLY

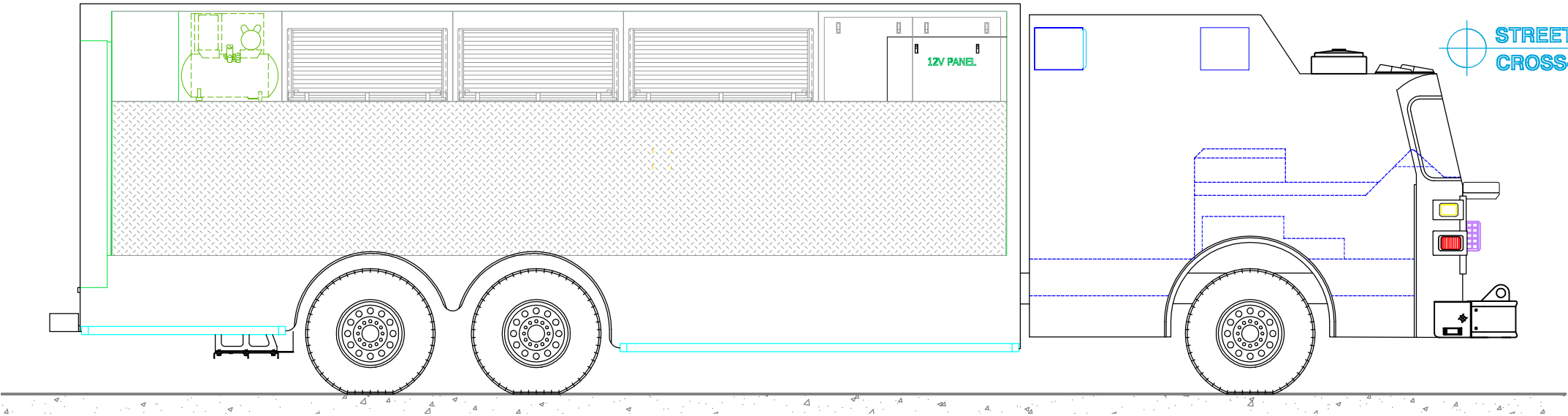
PLAN VIEW
CROSS-SECTION



CURBSIDE INTERIOR
CROSS-SECTION




STREETSIDE INTERIOR
CROSS-SECTION



REVISIONS			
REV	DESCRIPTION	DATE	BY

NOTE 1: Do not scale drawing. This drawing is for general truck configuration only. All items and dimensions shown are approximate and may vary with final production. The drawing may not provide illustration for all items in the specification. In all situations where the drawing may contradict the specification, the specifications shall prevail. This drawing and all data herein are provided as confidential materials and shall not be reproduced without written consent of the manufacturer.

THIS PRINT IS PROVIDED ON A RESTRICTED BASIS AND IS NOT TO BE USED IN ANY WAY DETRIMENTAL TO THE INTEREST OF SUTPHEN CORPORATION.			
 SUTPHEN CORPORATION FIRE APPARATUS SINCE 1890 7000 COLUMBUS-MARYSVILLE ROAD AMLIN, OHIO 43002			
SYRACUSE FIRE DEPARTMENT			
BODY SIZE: 26' BODY	UNIT TYPE: WALK THROUGH		
BODY MATERIAL: 12 GA STAINLESS	TRUCK NO: SVI #xxx		
CHASSIS TYPE: SUTPHEN	WHEELBASE:	SEE DWG	
—	CAB TO AXLE:	SEE DWG	
—	OVERALL LENGTH (OAL):	SEE DWG	
—	OVERALL WIDTH (OAW):	SEE DWG	
FOUR DOOR	OVERALL HEIGHT (OAH):	SEE DWG	
DRAWN BY: HJR	DATE: November 15, 2011	SCALE: 1/4" = 1'-0"	
DRAWING NO: Syracuse_NY_WT26_Prelim1			SHEET 2 OF 3