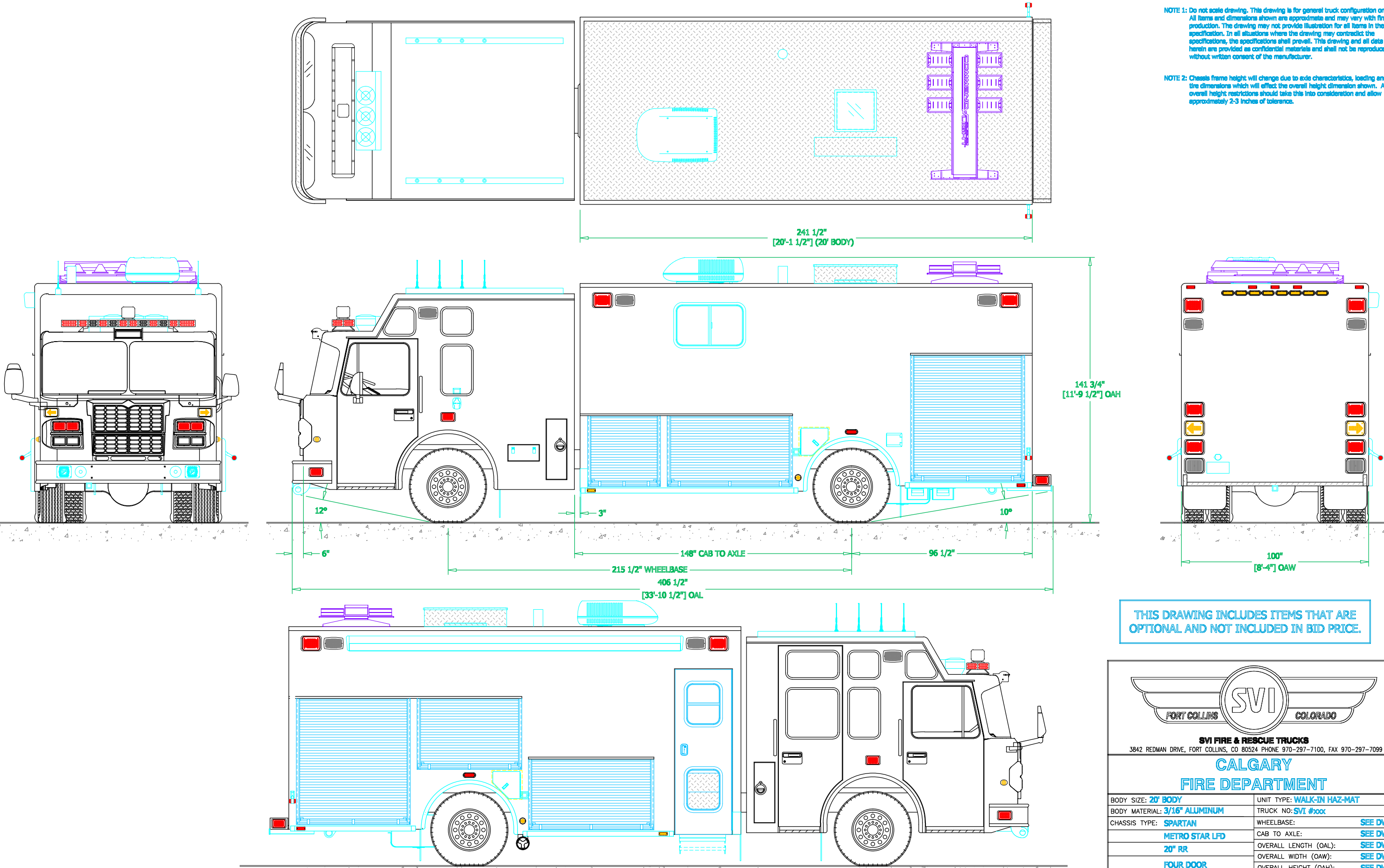


PRELIMINARY DRAWING - FOR LAYOUT PURPOSES ONLY

REVISIONS			
REV	DESCRIPTION	DATE	BY

NOTE 1: Do not scale drawing. This drawing is for general truck configuration only. All items and dimensions shown are approximate and may vary with final production. The drawing may not provide illustration for all items in the specification. In all situations where the drawing may contradict the specifications, the specifications shall prevail. This drawing and all data herein are provided as confidential materials and shall not be reproduced without written consent of the manufacturer.

NOTE 2: Chassis frame height will change due to axle characteristics, loading and tire dimensions which will effect the overall height dimension shown. Any overall height restrictions should take this into consideration and allow approximately 2-3 inches of tolerance.



THIS DRAWING INCLUDES ITEMS THAT ARE
OPTIONAL AND NOT INCLUDED IN BID PRICE.

SVI FIRE & RESCUE TRUCKS
3842 REDMAN DRIVE, FORT COLLINS, CO 80524 PHONE 970-297-7100, FAX 970-297-7099

**CALGARY
FIRE DEPARTMENT**

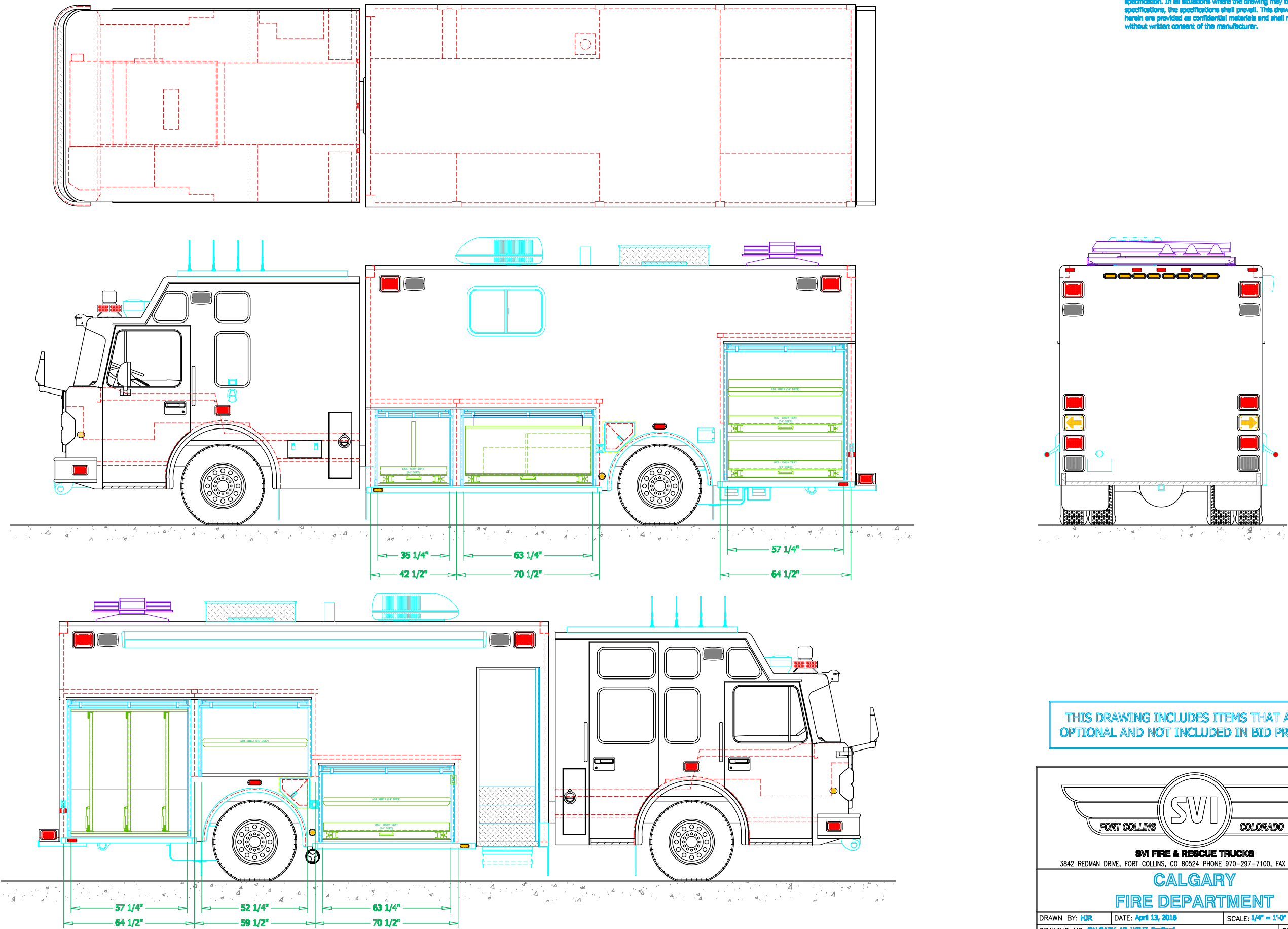
BODY SIZE: 20' BODY	UNIT TYPE: WALK-IN HAZ-MAT
BODY MATERIAL: 3/16" ALUMINUM	TRUCK NO: SVI #xxx
CHASSIS TYPE: SPARTAN	WHEELBASE: SEE DWG
METRO STAR LFD	CAB TO AXLE: SEE DWG
20" RR	OVERALL LENGTH (OAL): SEE DWG
FOUR DOOR	OVERALL WIDTH (OAW): SEE DWG
	OVERALL HEIGHT (OAH): SEE DWG

DRAWN BY: HJR	DATE: April 13, 2016	SCALE: 1/4" = 1'-0"
DRAWING NO: CALGARY_AB_WIHZ_Prelim1		SHEET 1 OF 3

PRELIMINARY DRAWING - FOR LAYOUT PURPOSES ONLY

REVISIONS			
REV	DESCRIPTION	DATE	BY

NOTE 1: Do not scale drawing. This drawing is for general truck configuration only. All items and dimensions shown are approximate and may vary with final production. The drawing may not provide illustration for all items in the specification. In all situations where the drawing may contradict the specifications, the specifications shall prevail. This drawing and all data herein are provided as confidential materials and shall not be reproduced without written consent of the manufacturer.



SVI FIRE & RESCUE TRUCKS
3842 REDMAN DRIVE, FORT COLLINS, CO 80524 PHONE 970-297-7100, FAX 970-297-7099

CALGARY FIRE DEPARTMENT

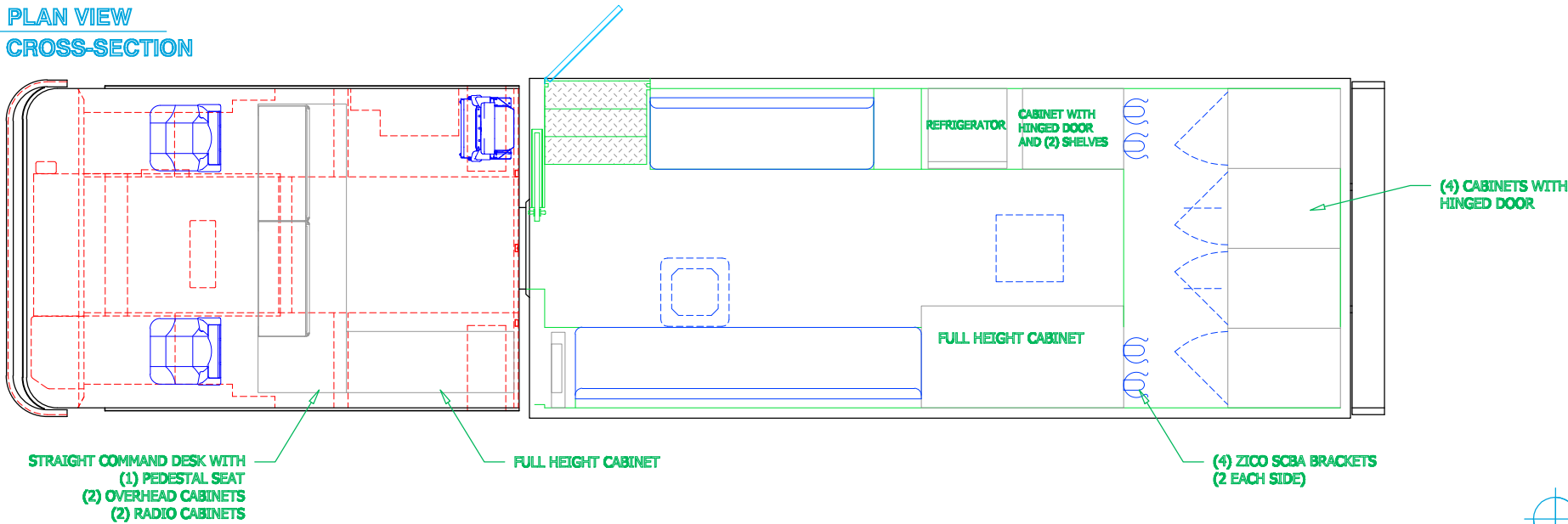
DRAWN BY: HDR	DATE: April 13, 2016	SCALE: 1/4" = 1'-0"
DRAWING NO: CALGARY_AB_WDHZ_PreCom1		SHEET 2 OF 3

PRELIMINARY DRAWING - FOR LAYOUT PURPOSES ONLY

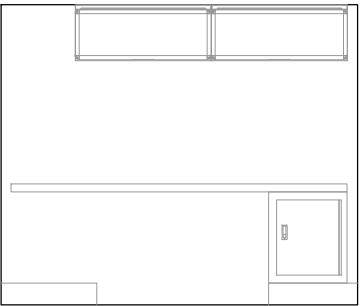
REVISIONS			
REV	DESCRIPTION	DATE	BY

NOTE 1: Do not scale drawing. This drawing is for general truck configuration only. All items and dimensions shown are approximate and may vary with final production. The drawing may not provide illustration for all items in the specification. In all situations where the drawing may contradict the specification, the specifications shall prevail. This drawing and all data herein are provided as confidential materials and shall not be reproduced without written consent of the manufacturer.

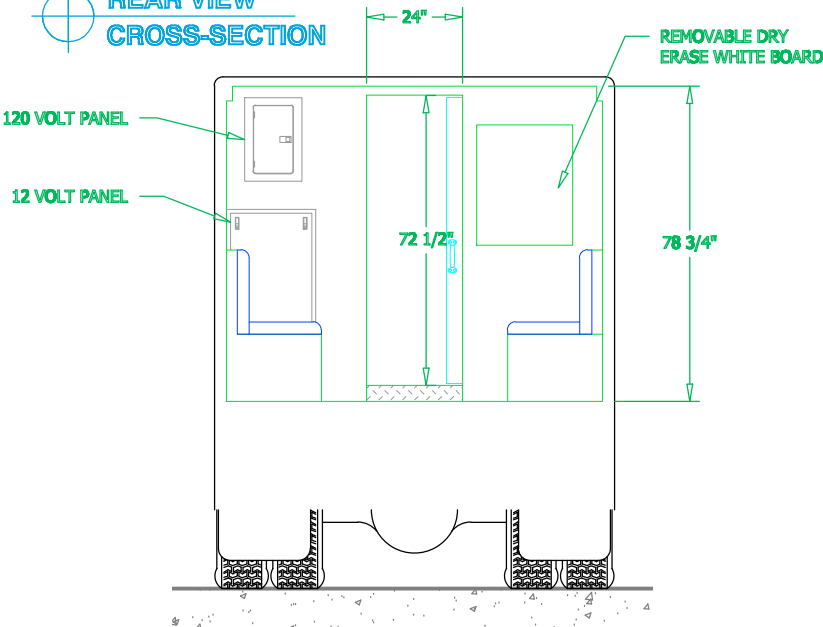
PLAN VIEW
CROSS-SECTION



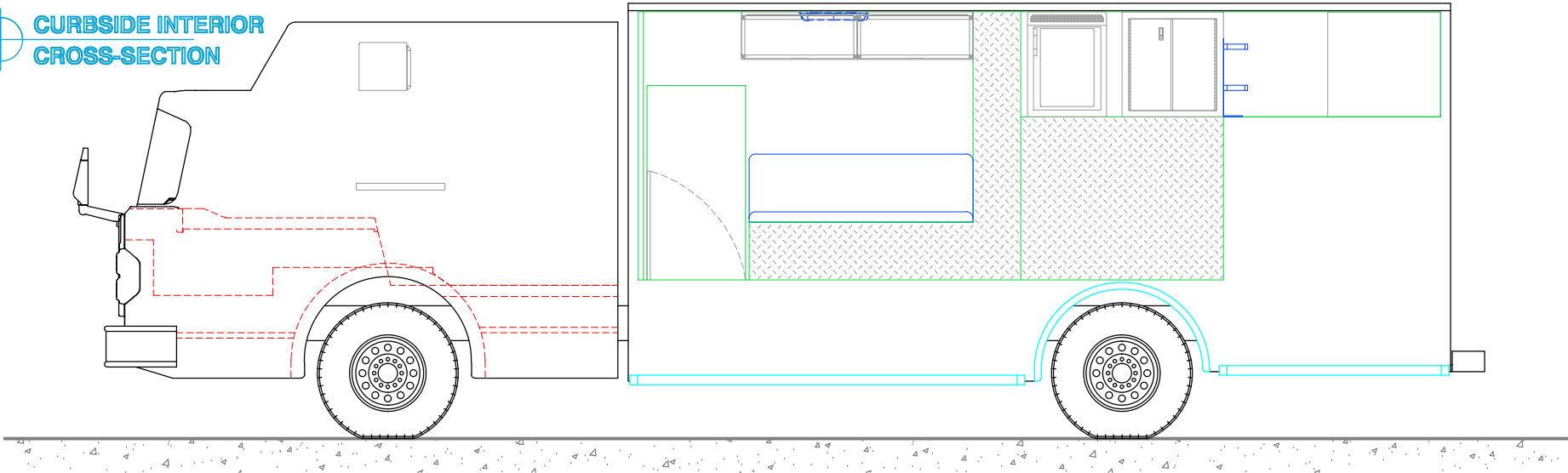
FRONT VIEW OF CHASSIS
CROSS-SECTION



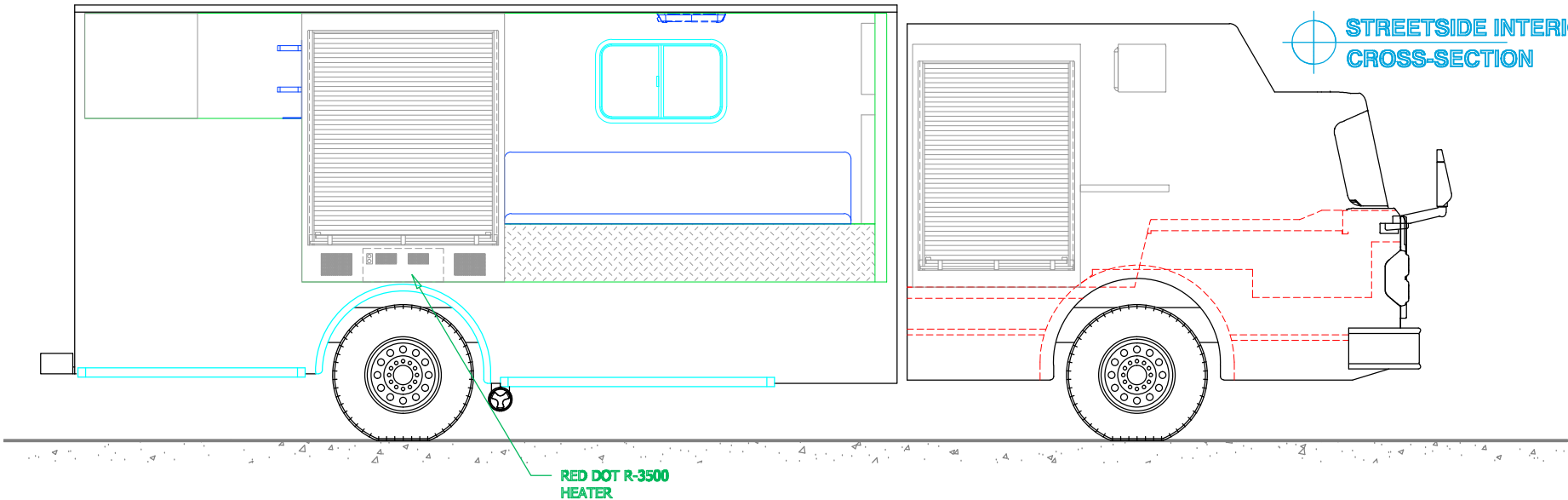
REAR VIEW
CROSS-SECTION



CURBSIDE INTERIOR
CROSS-SECTION



STREETSIDE INTERIOR
CROSS-SECTION



THIS DRAWING INCLUDES ITEMS THAT ARE
OPTIONAL AND NOT INCLUDED IN BID PRICE.



SVI FIRE & RESCUE TRUCKS
3842 REDMAN DRIVE, FORT COLLINS, CO 80524 PHONE 970-297-7100, FAX 970-297-7099

CALGARY
FIRE DEPARTMENT

DRAWN BY: HDR DATE: April 13, 2016 SCALE: 1/4" = 1'-0"

DRAWING NO: CALGARY_AB_WDHZ_PreCom1

SHEET 3 OF 3