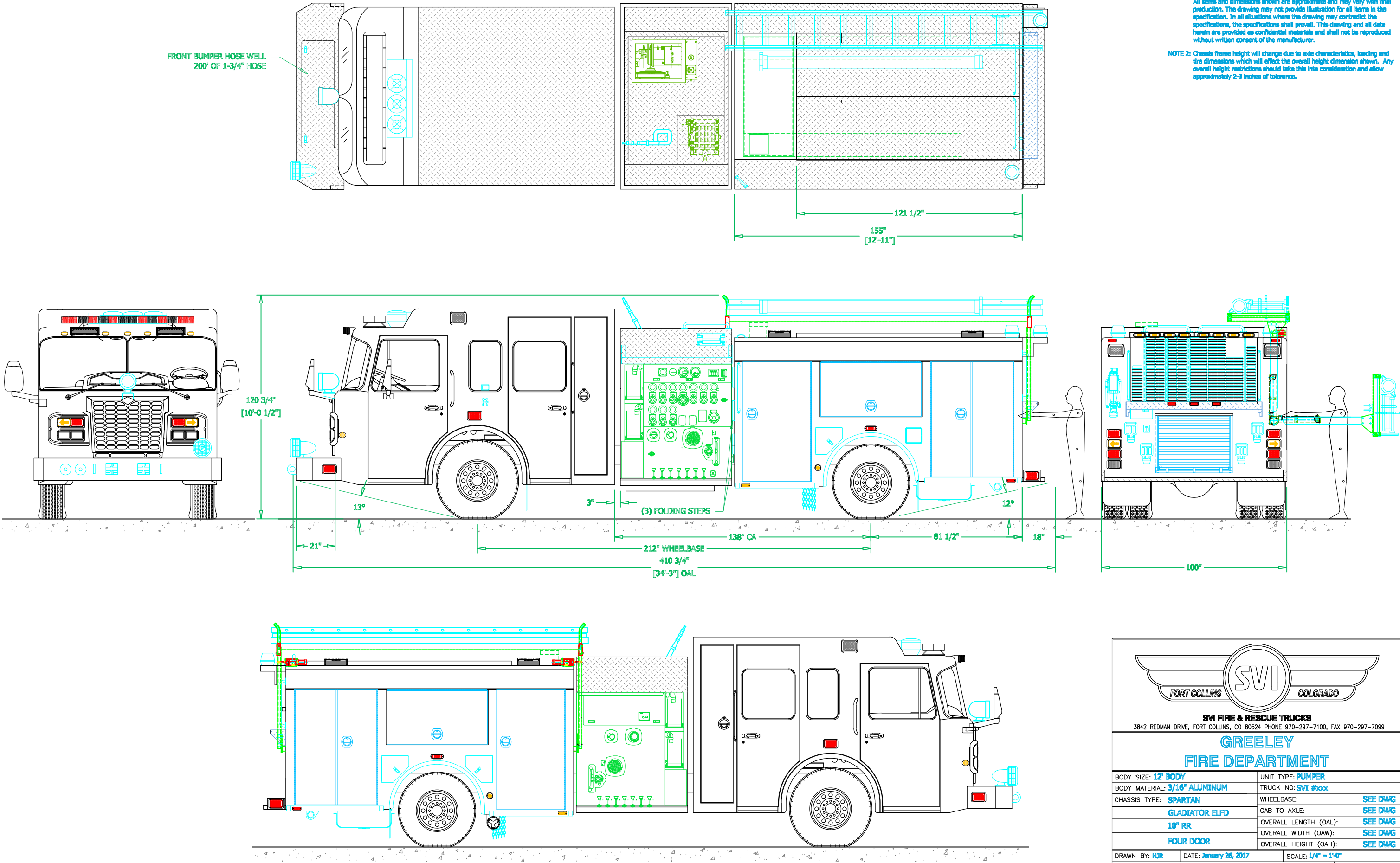


PRELIMINARY DRAWING - FOR LAYOUT PURPOSES ONLY

REVISIONS			
REV	DESCRIPTION	DATE	BY

NOTE 1: Do not scale drawing. This drawing is for general truck configuration only. All items and dimensions shown are approximate and may vary with final production. The drawing may not provide illustration for all items in the specification. In all situations where the drawing may contradict the specifications, the specifications shall prevail. This drawing and all data herein are provided as confidential materials and shall not be reproduced without written consent of the manufacturer.

NOTE 2: Chassis frame height will change due to axle characteristics, loading and tire dimensions which will effect the overall height dimension shown. Any overall height restrictions should take this into consideration and allow approximately 2-3 inches of tolerance.



SVI FIRE & RESCUE TRUCKS
3842 REDMAN DRIVE, FORT COLLINS, CO 80524 PHONE 970-297-7100, FAX 970-297-7099

**GREELEY
FIRE DEPARTMENT**

BODY SIZE: 12' BODY	UNIT TYPE: PUMPER
BODY MATERIAL: 3/16" ALUMINUM	TRUCK NO: SVI #xxx
CHASSIS TYPE: SPARTAN GLADIATOR ELFD 10" RR	WHEELBASE: SEE DWG CAB TO AXLE: SEE DWG OVERALL LENGTH (OAL): SEE DWG OVERALL WIDTH (OAW): SEE DWG OVERALL HEIGHT (OAH): SEE DWG
DRAWN BY: HJR	DATE: January 26, 2017
DRAWING NO: Greeley_CO_pm_Prelim1	SCALE: 1/4" = 1'-0"

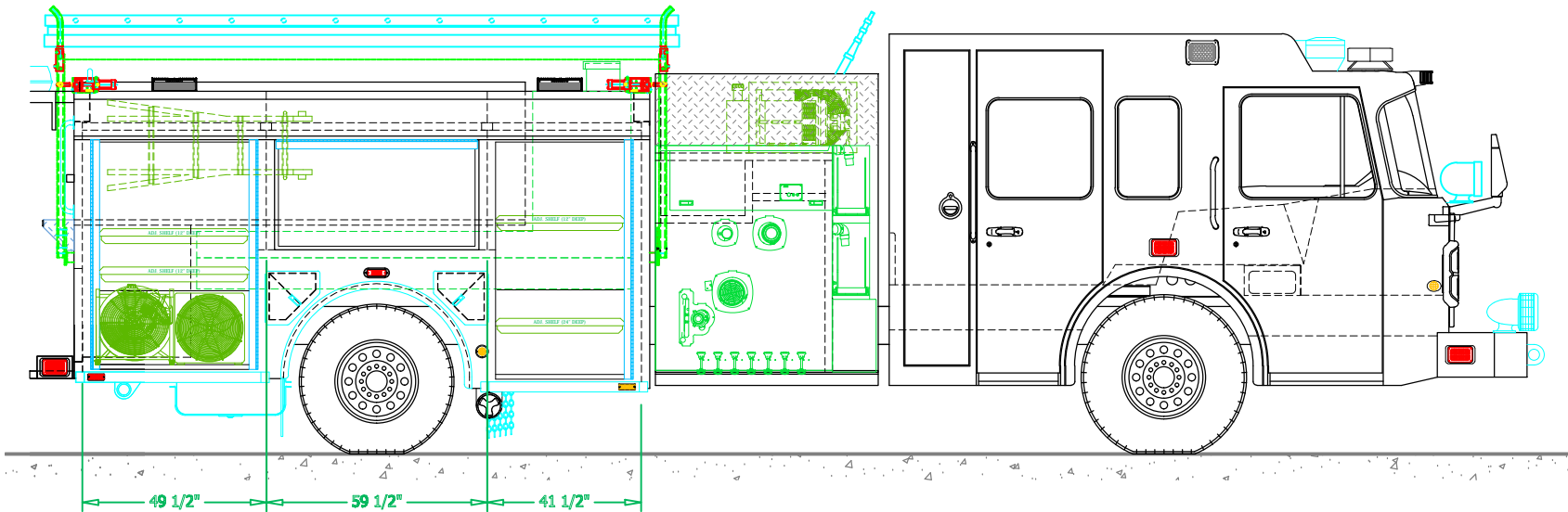
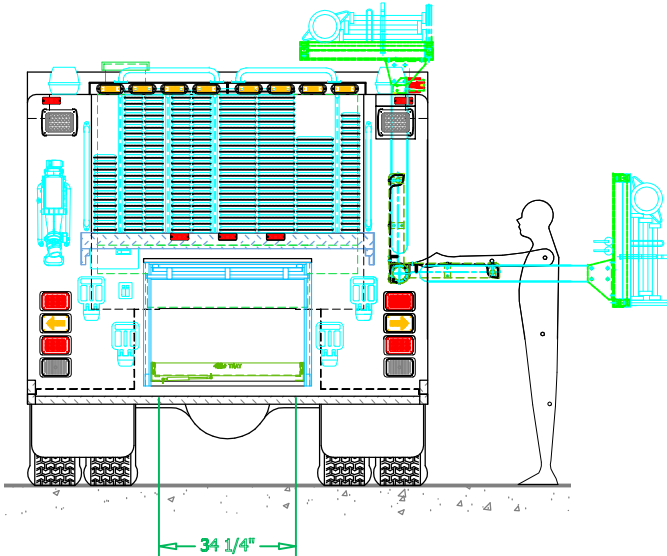
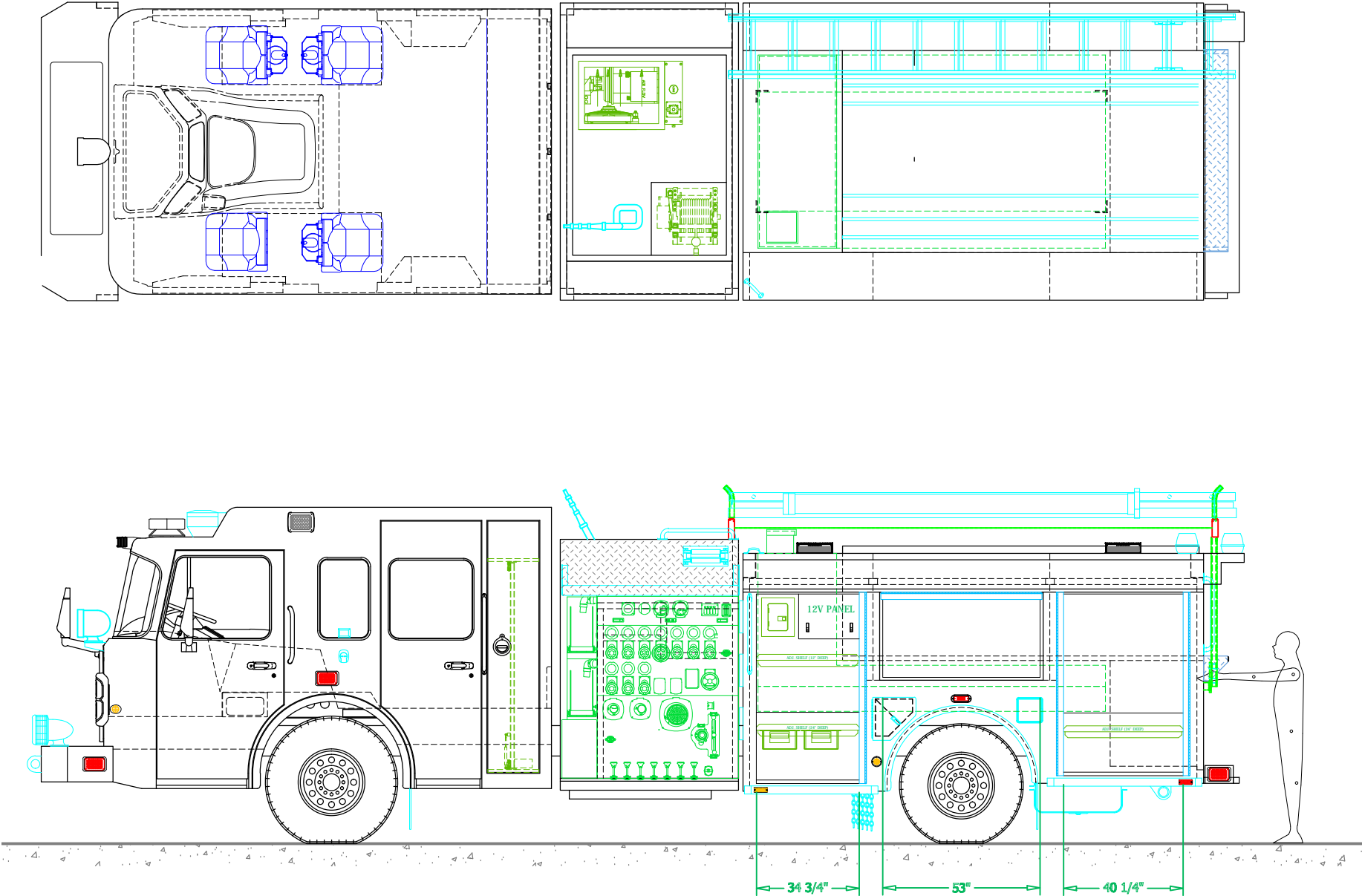
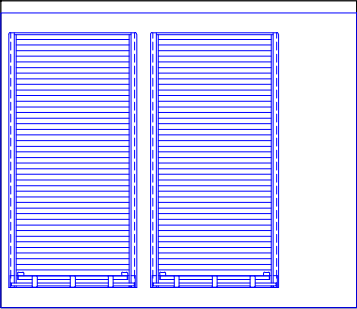
SHEET **1** OF **2**

PRELIMINARY DRAWING - FOR LAYOUT PURPOSES ONLY

REVISIONS			
REV	DESCRIPTION	DATE	BY

NOTE 1: Do not scale drawing. This drawing is for general truck configuration only. All items and dimensions shown are approximate and may vary with final production. The drawing may not provide illustration for all items in the specification. In all situations where the drawing may contradict the specifications, the specifications shall prevail. This drawing and all data herein are provided as confidential materials and shall not be reproduced without written consent of the manufacturer.

REAR OF CHASSIS
CROSS-SECTION



SVI FIRE & RESCUE TRUCKS
3842 REDMAN DRIVE, FORT COLLINS, CO 80524 PHONE 970-297-7100, FAX 970-297-7099

**GREELEY
FIRE DEPARTMENT**

DRAWN BY: HDR	DATE: Jan. 26, 17	SCALE: 1/4" = 1'-0"
DRAWING NO: Greeley_CO_pm_Prelim1		SHEET 2 OF 2