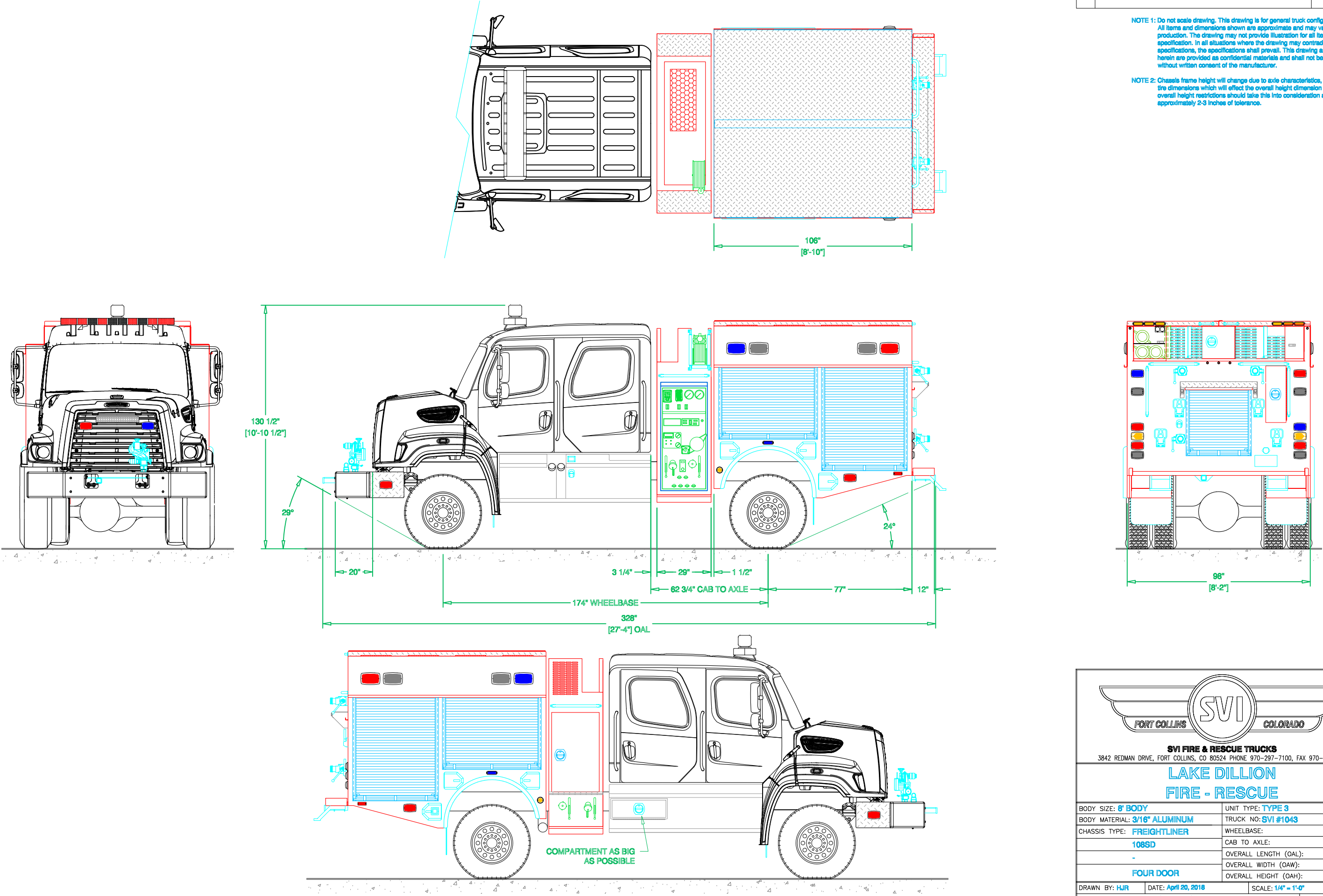


PRELIMINARY DRAWING - FOR LAYOUT PURPOSES ONLY

REVISIONS			
REV	DESCRIPTION	DATE	BY

NOTE 1: Do not scale drawing. This drawing is for general truck configuration only. All items and dimensions shown are approximate and may vary with final production. The drawing may not provide illustration for all items in the specification. In all situations where the drawing may contradict the specifications, the specifications shall prevail. This drawing and all data herein are provided as confidential materials and shall not be reproduced without written consent of the manufacturer.

NOTE 2: Chassis frame height will change due to axle characteristics, loading and tire dimensions which will effect the overall height dimension shown. Any overall height restrictions should take this into consideration and allow approximately 2-3 inches of tolerance.



**SVI FIRE & RESCUE TRUCKS**  
3842 REDMAN DRIVE, FORT COLLINS, CO 80524 PHONE 970-297-7100, FAX 970-297-7099

**LAKE DILLION**  
**FIRE - RESCUE**

BODY SIZE: <b>8' BODY</b>	UNIT TYPE: <b>TYPE 3</b>
BODY MATERIAL: <b>3/16" ALUMINUM</b>	TRUCK NO: <b>SVI #1043</b>
CHASSIS TYPE: <b>FREIGHTLINER</b>	WHEELBASE: <b>SEE DWG</b>
<b>108SD</b>	CAB TO AXLE: <b>SEE DWG</b>
<b>-</b>	OVERALL LENGTH (OAL): <b>SEE DWG</b>
<b>FOUR DOOR</b>	OVERALL WIDTH (OAW): <b>SEE DWG</b>
	OVERALL HEIGHT (OAH): <b>SEE DWG</b>

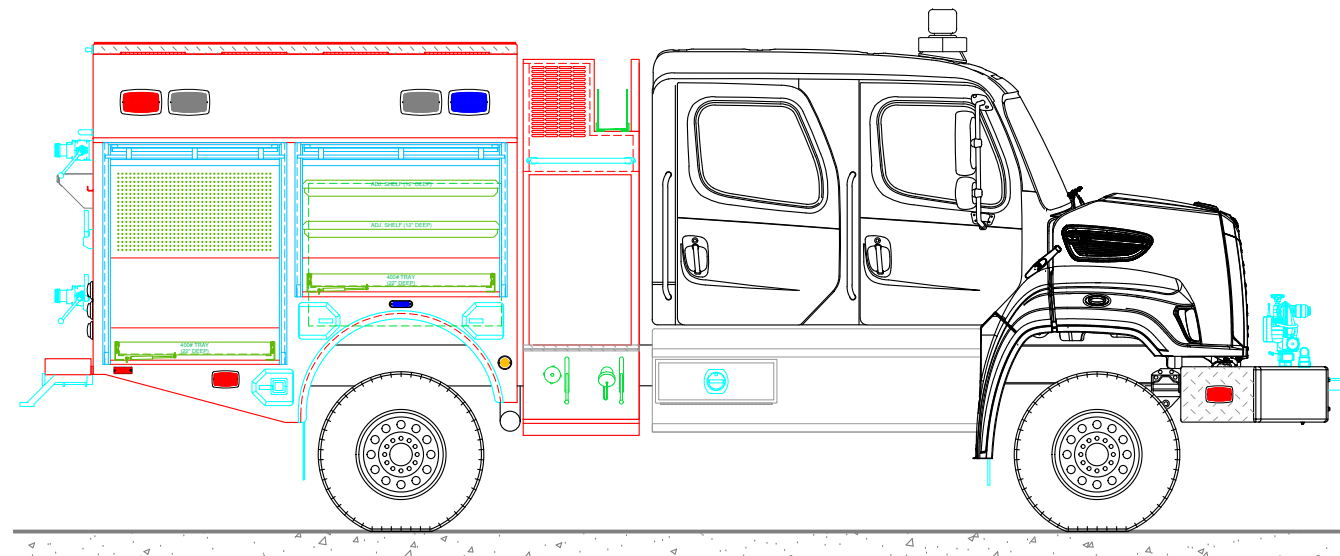
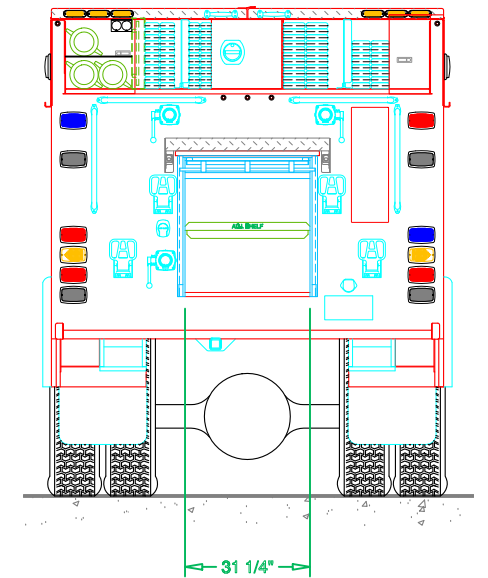
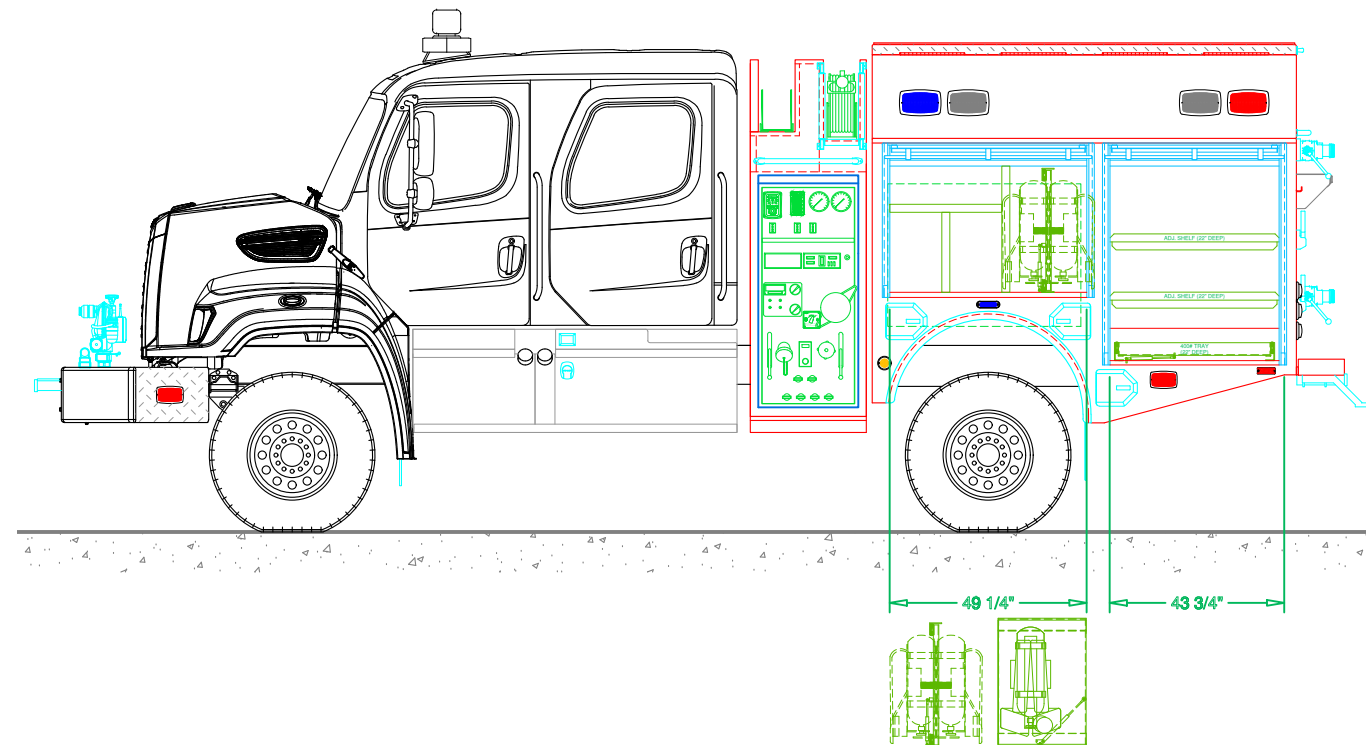
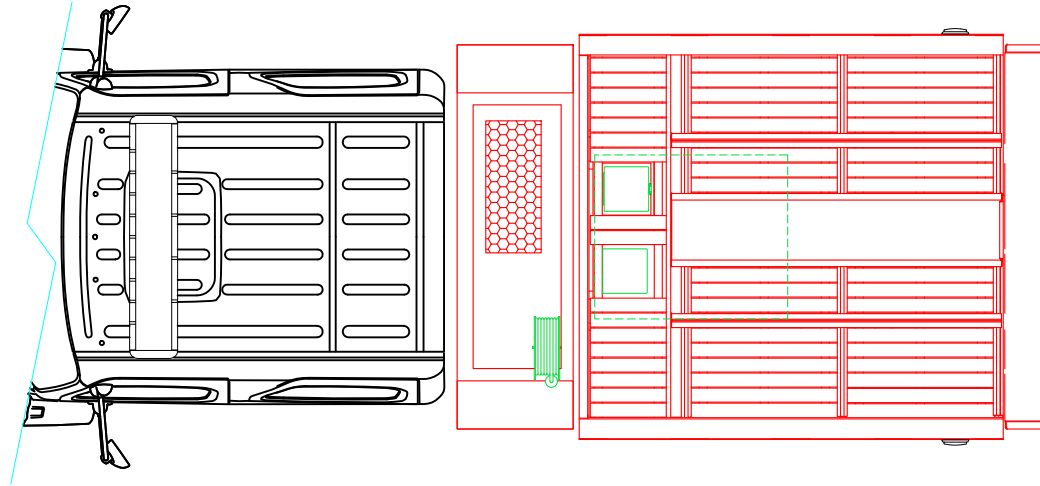
DRAWN BY: **HJR**    DATE: **April 20, 2018**    SCALE: **1/4" = 1'-0"**

DRAWING NO: **LakeDillon\_CO\_13\_PreCon7**    SHEET **1** OF **2**

PRELIMINARY DRAWING - FOR LAYOUT PURPOSES ONLY

REVISIONS			
REV	DESCRIPTION	DATE	BY

**NOTE 1:** Do not scale drawing. This drawing is for general truck configuration only. All items and dimensions shown are approximate and may vary with final production. The drawing may not provide illustration for all items in the specification. In all situations where the drawing may contradict the specifications, the specifications shall prevail. This drawing and all data herein are provided as confidential materials and shall not be reproduced without written consent of the manufacturer.



**SVI FIRE & RESCUE TRUCKS**  
3842 REDMAN DRIVE, FORT COLLINS, CO 80524 PHONE 970-297-7100, FAX 970-297-7099

LAKE DILLION  
FIRE - RESCUE

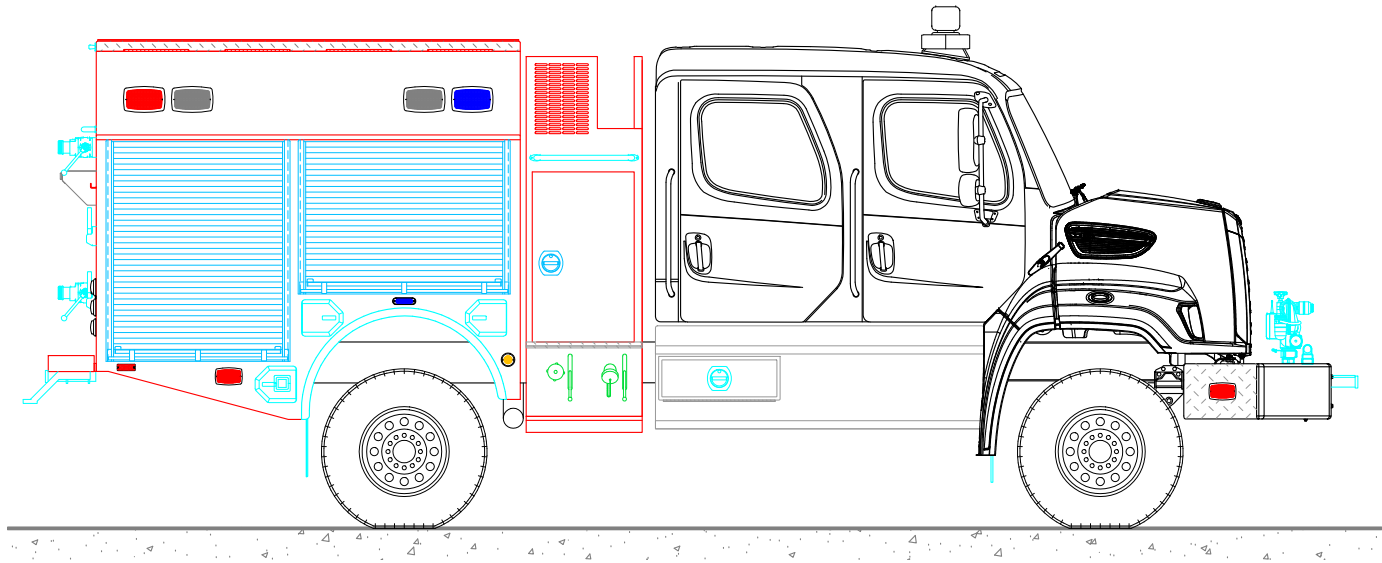
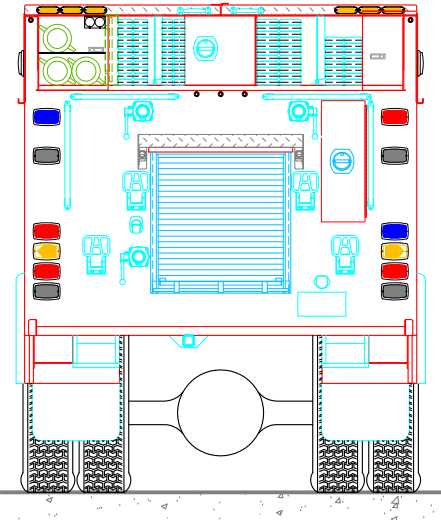
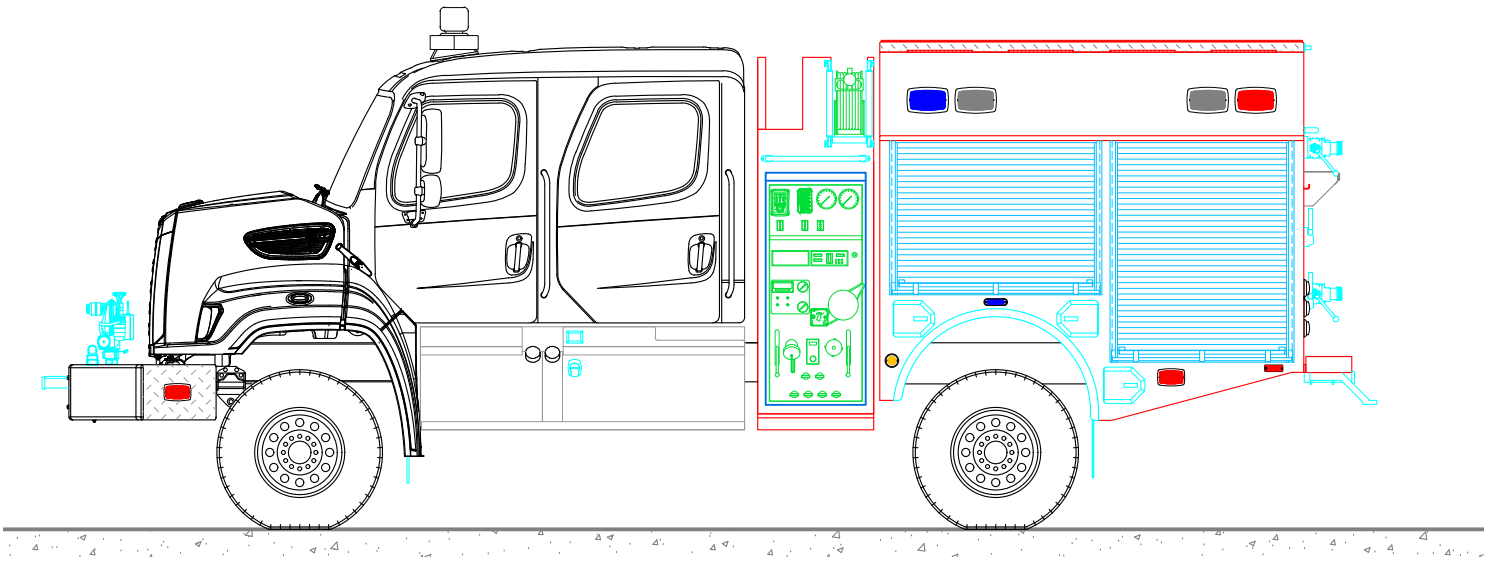
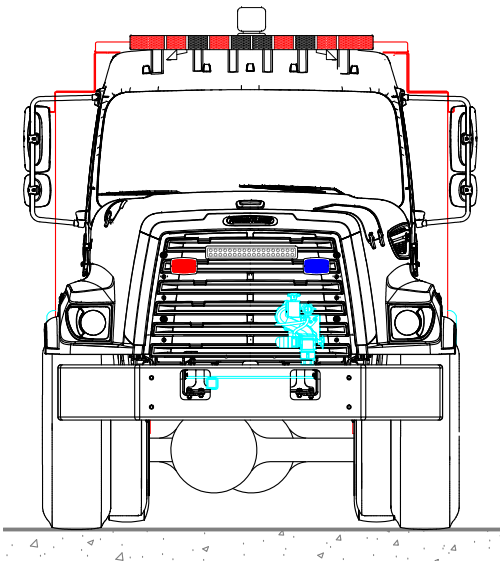
DRAWN BY: <b>HJR</b>	DATE: <b>Apr. 20, 18</b>	SCALE: <b>1/4" = 1'-0"</b>
DRAWING NO: <b>LakeDillon_CO_13_PreCon7</b>		SHEET <b>2</b> OF <b>2</b>

PRELIMINARY DRAWING - FOR LAYOUT PURPOSES ONLY

REVISIONS			
REV	DESCRIPTION	DATE	BY

NOTE 1: Do not scale drawing. This drawing is for general truck configuration only. All items and dimensions shown are approximate and may vary with final production. The drawing may not provide illustration for all items in the specification. In all situations where the drawing may contradict the specifications, the specifications shall prevail. This drawing and all data herein are provided as confidential materials and shall not be reproduced without written consent of the manufacturer.

NOTE 2: Chassis frame height will change due to axle characteristics, loading and tire dimensions which will effect the overall height dimension shown. Any overall height restrictions should take this into consideration and allow approximately 2-3 inches of tolerance.



SVI FIRE & RESCUE TRUCKS  
3842 REDMAN DRIVE, FORT COLLINS, CO 80524 PHONE 970-297-7100, FAX 970-297-7099

LAKE DILLION  
FIRE - RESCUE

BODY SIZE: 8' BODY	UNIT TYPE: TYPE 3
BODY MATERIAL: 3/16" ALUMINUM	TRUCK NO: SVI #1043
CHASSIS TYPE: FREIGHTLINER	WHEELBASE: SEE DWG
108SD	CAB TO AXLE: SEE DWG
-	OVERALL LENGTH (OAL): SEE DWG
FOUR DOOR	OVERALL WIDTH (OAW): SEE DWG
	OVERALL HEIGHT (OAH): SEE DWG
DRAWN BY: HJR	DATE: April 20, 2018
DRAWING NO: LakeDillon_CO_13_PreCon7	SCALE: 1/4" = 1'-0"
SHEET 1 OF 1	