



Fort Morgan 4x4 Heavy Rescue #1084

Chassis

Cab: Spartan Metro Star EMFD with 10" RR and 4 x 4 Axle Configuration

Engine: Cummins L9, 450HP

Transmission: Allison Gen V-E EVS 3000

Wheelbase: 193"

Body

Material: Aluminum

Body Length: 18' - 3"

Overall Height: 10' - 5"

Overall Length: 31' - 9"

Features

Command Light KL415D-W2 Light Tower

OnScene Solutions LED Compartment Lighting

Whelen LED Warning & Scene Lighting

OnScene Aluminum Heavy-Duty Cargo Slides

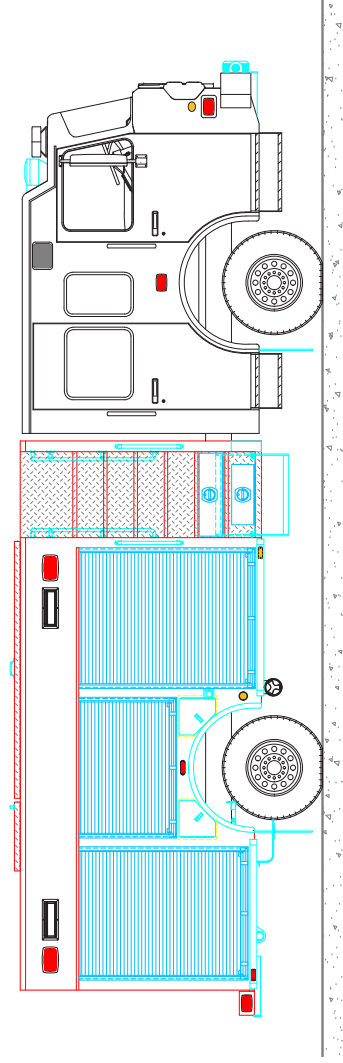
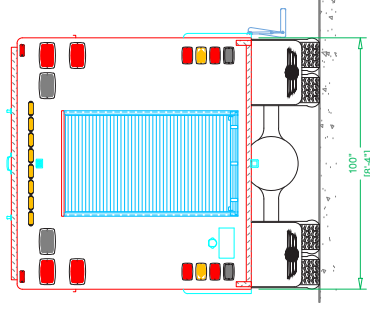
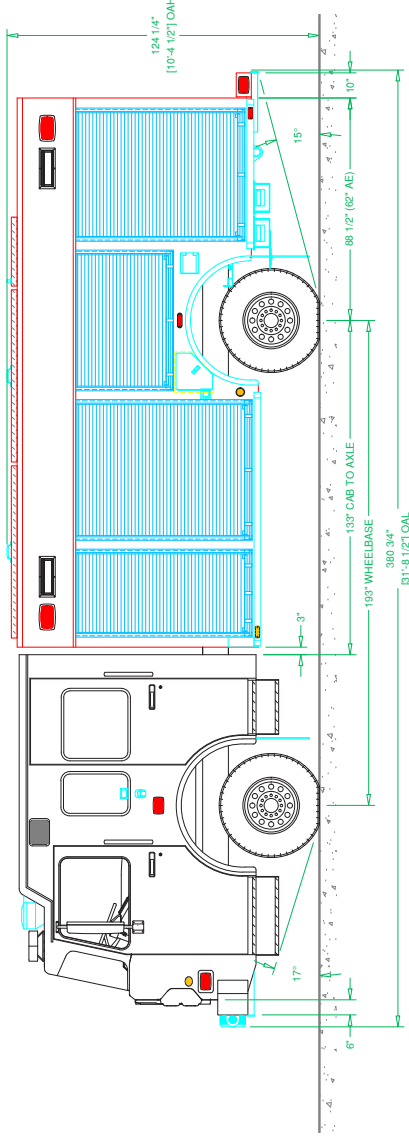
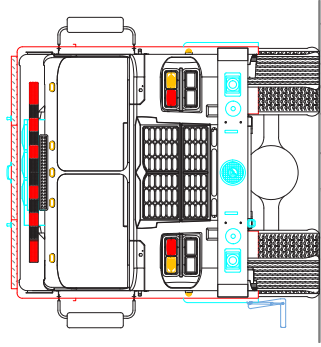
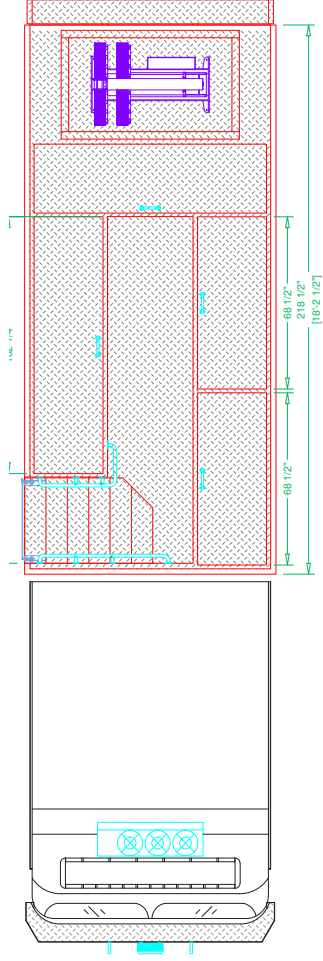
Ramsey 9,000-lb. 12-Volt Electric Winch

(2) Zico 1000 Series KD-UH SCBA Air Pack Brackets

V-MUX Vista IV Multiplex System Interface Displays

(4) Rooftop Storage Compartments with Side Stairwell

Command Desk With Lift-Up Slanted Surface



See more at svitrucks.com