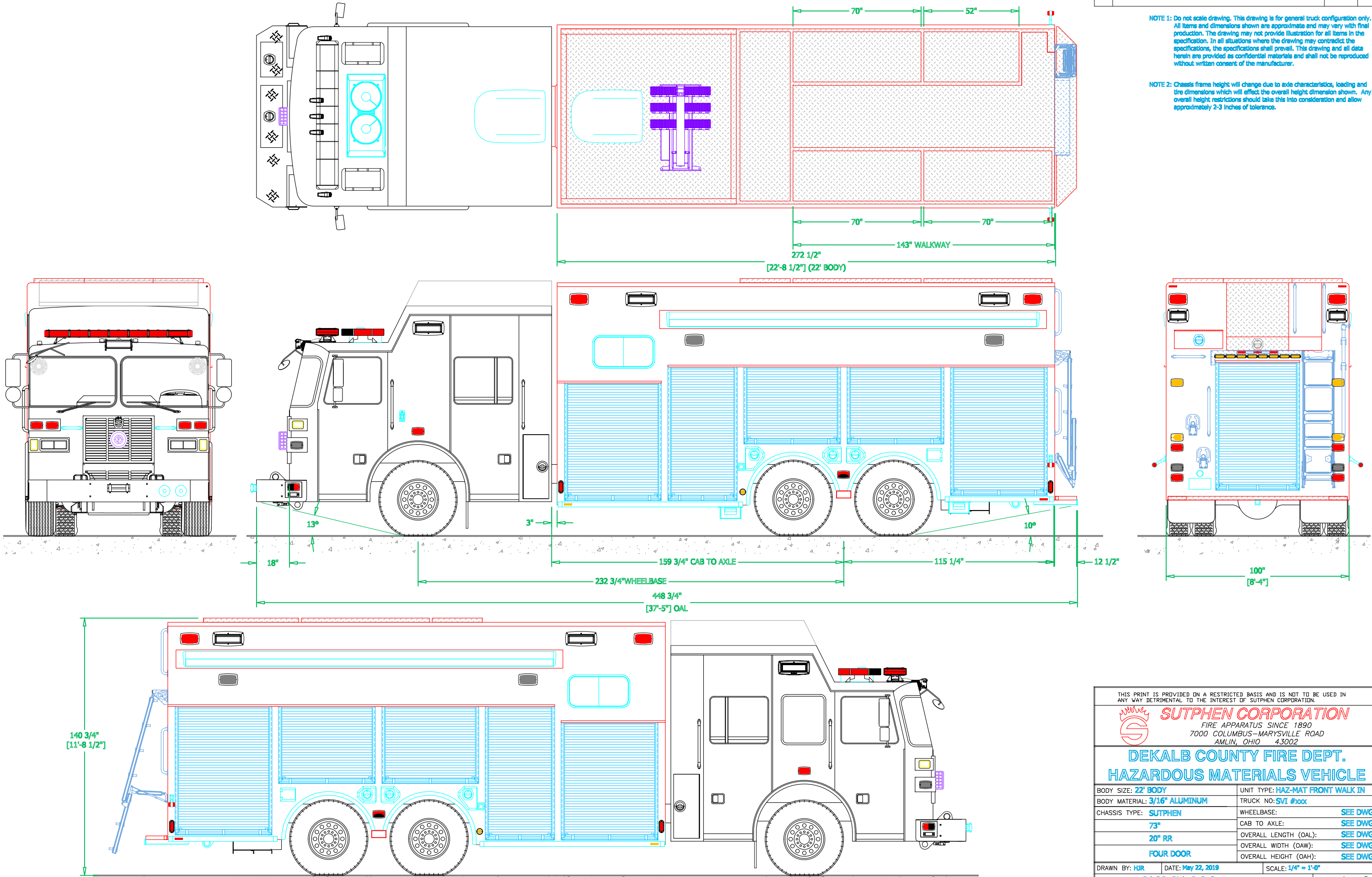



PRELIMINARY DRAWING - FOR LAYOUT PURPOSES ONLY

REVISIONS			
REV	DESCRIPTION	DATE	BY

NOTE 1: Do not scale drawing. This drawing is for general truck configuration only. All items and dimensions shown are approximate and may vary with final production. The drawing may not provide illustration for all items in the specification. In all situations where the drawing may contradict the specifications, the specifications shall prevail. This drawing and all data herein are provided as confidential materials and shall not be reproduced without written consent of the manufacturer.

NOTE 2: Chassis frame height will change due to axle characteristics, loading and tire dimensions which will effect the overall height dimension shown. Any overall height restrictions should take this into consideration and allow approximately 2-3 inches of tolerance.



THIS PRINT IS PROVIDED ON A RESTRICTED BASIS AND IS NOT TO BE USED IN ANY WAY DETRIMENTAL TO THE INTEREST OF SUTPHEN CORPORATION.			
<div><div>SUTPHEN CORPORATION FIRE APPARATUS SINCE 1890 7000 COLUMBUS-MARYSVILLE ROAD AMLIN, OHIO 43002</div></div>			
<div>DEKALB COUNTY FIRE DEPT.</div> <div>HAZARDOUS MATERIALS VEHICLE</div>			
BODY SIZE: 22' BODY		UNIT TYPE: HAZ-MAT FRONT WALK IN	
BODY MATERIAL: 3/16" ALUMINUM		TRUCK NO: SVI #xxx	
CHASSIS TYPE: SUTPHEN		WHEELBASE:	SEE DWG
73"		CAB TO AXLE:	SEE DWG
20" RR		OVERALL LENGTH (OAL):	SEE DWG
FOUR DOOR		OVERALL WIDTH (OAW):	SEE DWG
		OVERALL HEIGHT (OAH):	SEE DWG
DRAWN BY: HJR		DATE: May 22, 2019	SCALE: 1/4" = 1'-0"
DRAWING NO: DekalbCo_GA_hz_PreCon2			SHEET 1 OF 3

REVISIONS			
REV	DESCRIPTION	DATE	BY

The image displays three technical drawings of a truck chassis, illustrating the internal layout and dimensions for a specialized vehicle build.

Top View: Shows the chassis from above, highlighting the front cab, the main body section, and the rear section. The main body is divided into several compartments, including a large central area and smaller sections at the front and rear. Dimensions are provided for the main body sections: 49 1/4" (front), 34 1/4" (middle), 49 1/4" (rear), and 49 1/4" (rear).

Side View: Shows the chassis from the side, highlighting the front cab, the main body section, and the rear section. The main body is divided into several compartments, including a large central area and smaller sections at the front and rear. Dimensions are provided for the main body sections: 49 1/4" (front), 34 1/4" (middle), 49 1/4" (rear), and 49 1/4" (rear).

Rear View: Shows the chassis from the rear, highlighting the rear section and the main body section. The main body is divided into several compartments, including a large central area and smaller sections at the front and rear. Dimensions are provided for the main body sections: 56 1/2" (front), 56 1/2" (middle), 56 1/2" (rear), 41 1/2" (middle), and 56 1/2" (rear).

Internal Layout: The drawings show the internal layout of the chassis, including the front cab, the main body section, and the rear section. The main body is divided into several compartments, including a large central area and smaller sections at the front and rear. The layout includes various components such as the 12V/240V PANEL, 12V PANEL, BATTERY TOOLS, HPU, and 335-XL CUTTER SPREADER. The layout also shows the location of the front and rear wheels, the front and rear lights, and the front and rear mirrors.

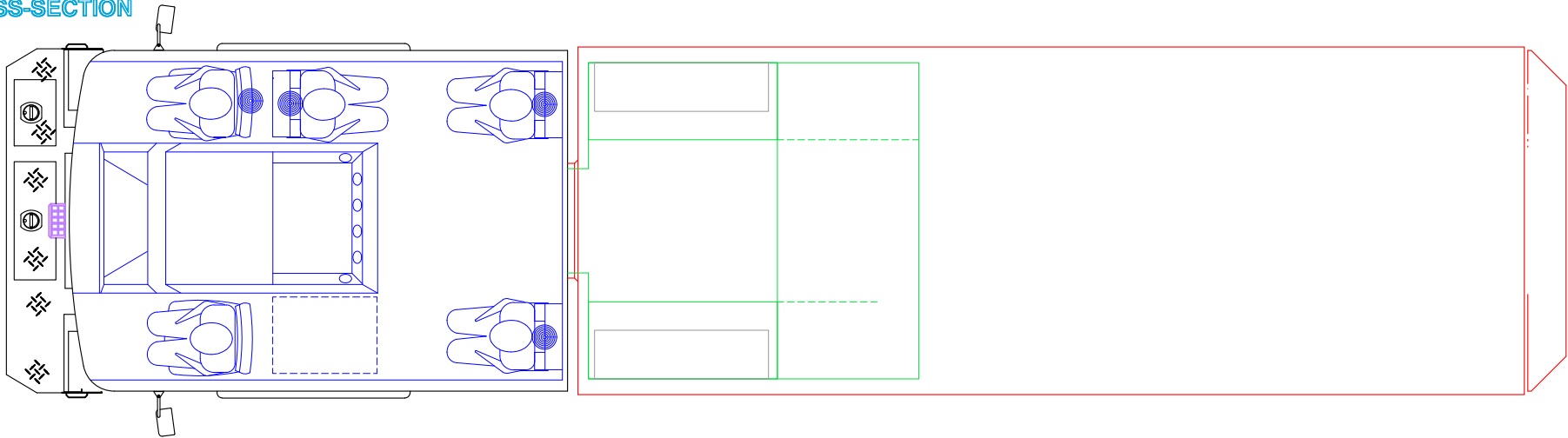
Q:\On Order\DekalbCo GA hz 1093\Sales Documents\6) Drawings & Graphics\DekalbCo GA hz PreCon2.dwg, 5/22/2019 1:43:28 PM

PRELIMINARY DRAWING - FOR LAYOUT PURPOSES ONLY

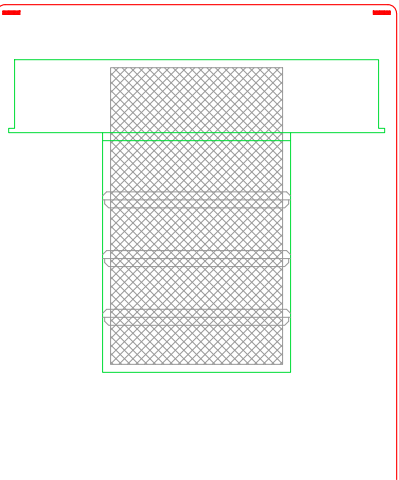
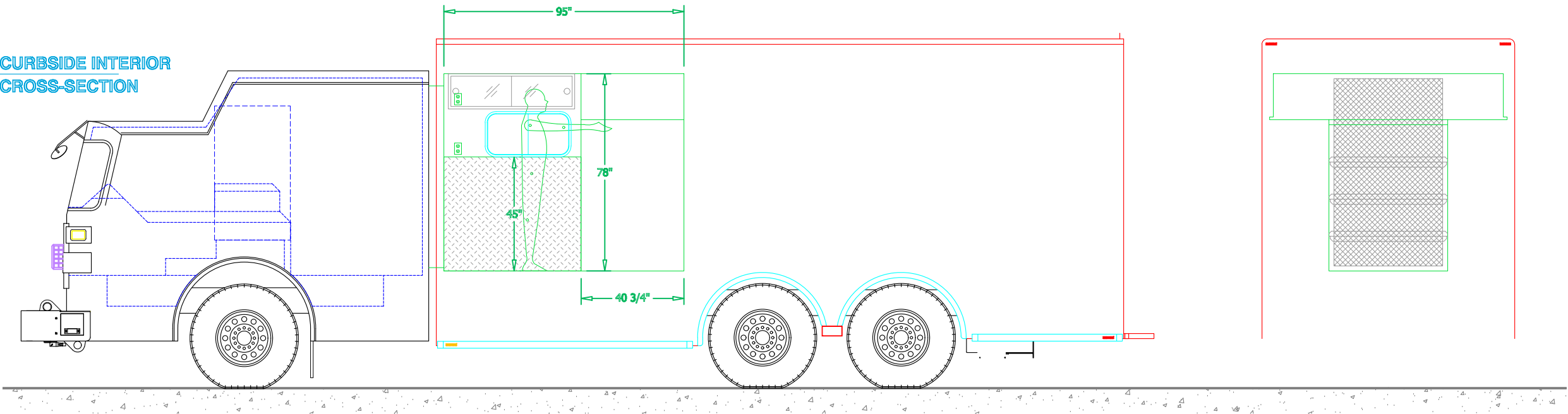
REVISIONS			
REV	DESCRIPTION	DATE	BY

NOTE 1: Do not scale drawing. This drawing is for general truck configuration only. All items and dimensions shown are approximate and may vary with final production. The drawing may not provide illustration for all items in the specification. In all situations where the drawing may contradict the specifications, the specifications shall prevail. This drawing and all data herein are provided as confidential materials and shall not be reproduced without written consent of the manufacturer.

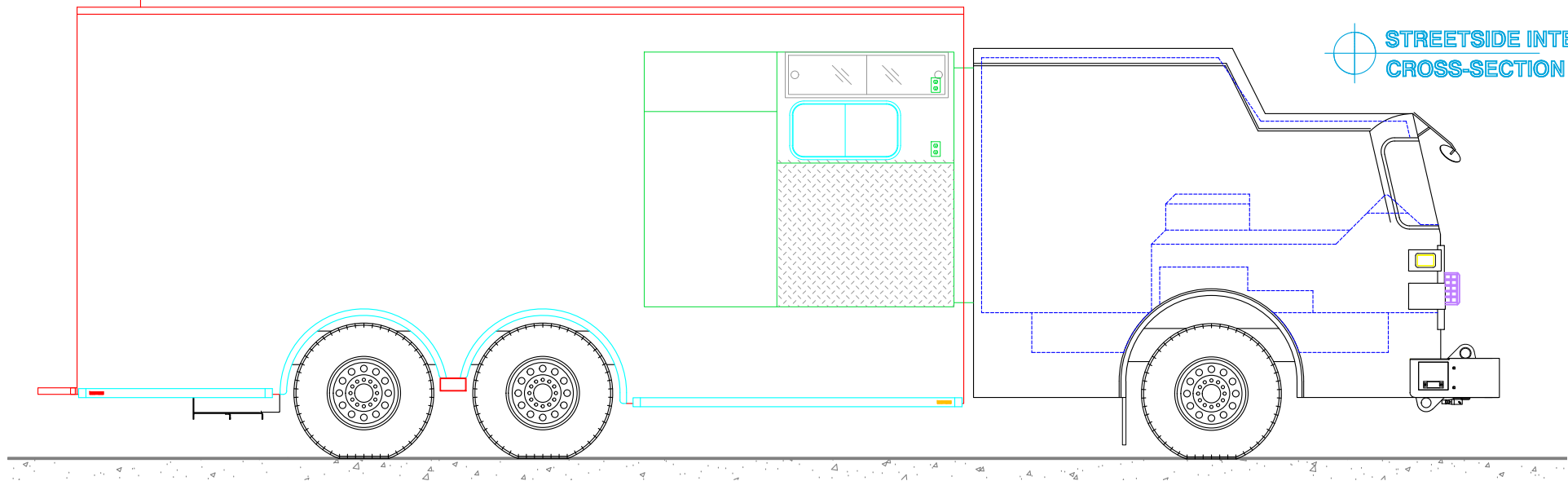
PLAN VIEW
CROSS-SECTION




CURBSIDE INTERIOR
CROSS-SECTION



STREETSIDE INTERIOR
CROSS-SECTION



THIS PRINT IS PROVIDED ON A RESTRICTED BASIS AND IS NOT TO BE USED IN ANY WAY DETRIMENTAL TO THE INTEREST OF SUTPHEN CORPORATION.			
 SUTPHEN CORPORATION FIRE APPARATUS SINCE 1890 7000 COLUMBUS-MARYSVILLE ROAD AMLIN, OHIO 43002			
DEKALB COUNTY FIRE DEPT. HAZARDOUS MATERIALS VEHICLE			
BODY SIZE: 22' BODY	UNIT TYPE: HAZ-MAT FRONT WALK IN		
BODY MATERIAL: 3/16" ALUMINUM	TRUCK NO: SVI #xxx		
CHASSIS TYPE: SUTPHEN	WHEELBASE:	SEE DWG	
73"	CAB TO AXLE:	SEE DWG	
20" RR	OVERALL LENGTH (OAL):	SEE DWG	
FOUR DOOR	OVERALL WIDTH (OAW):	SEE DWG	
	OVERALL HEIGHT (OAH):	SEE DWG	
DRAWN BY: HJR	DATE: May 22, 2019	SCALE: 1/4" = 1'-0"	
DRAWING NO: DekalbCo_GA_hz_PreCon2			SHEET 3 OF 3