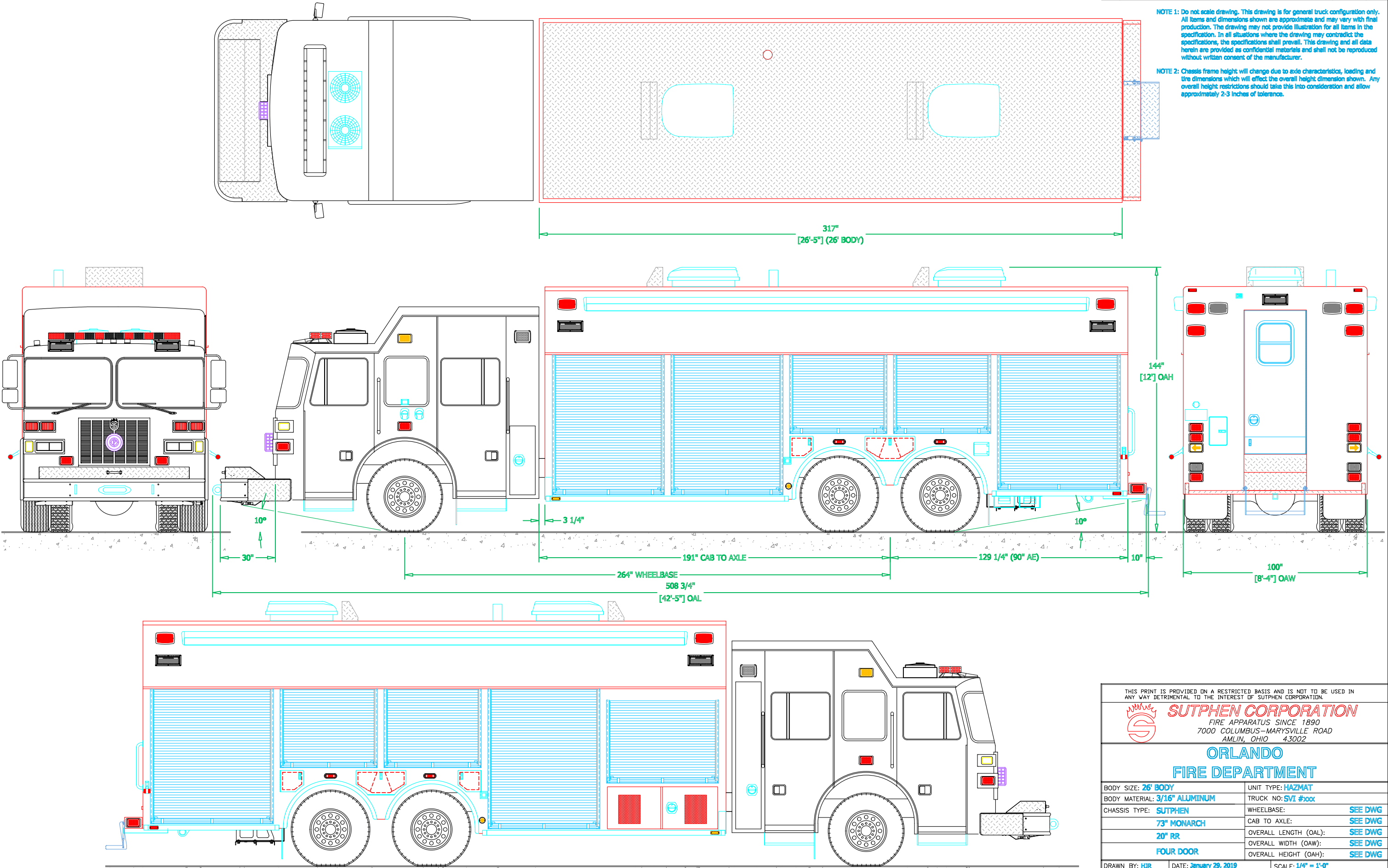



PRELIMINARY DRAWING - FOR LAYOUT PURPOSES ONLY

REVISIONS			
REV	DESCRIPTION	DATE	BY

NOTE 1: Do not scale drawing. This drawing is for general truck configuration only. All items and dimensions shown are approximate and may vary with final production. The drawing may not provide illustration for all items in the specification. In all situations where the drawing may contradict the specifications, the specifications shall prevail. This drawing and all data herein are provided as confidential materials and shall not be reproduced without written consent of the manufacturer.

NOTE 2: Chassis frame height will change due to axle characteristics, loading and tire dimensions which will effect the overall height dimension shown. Any overall height restrictions should take this into consideration and allow approximately 2-3 inches of tolerance.

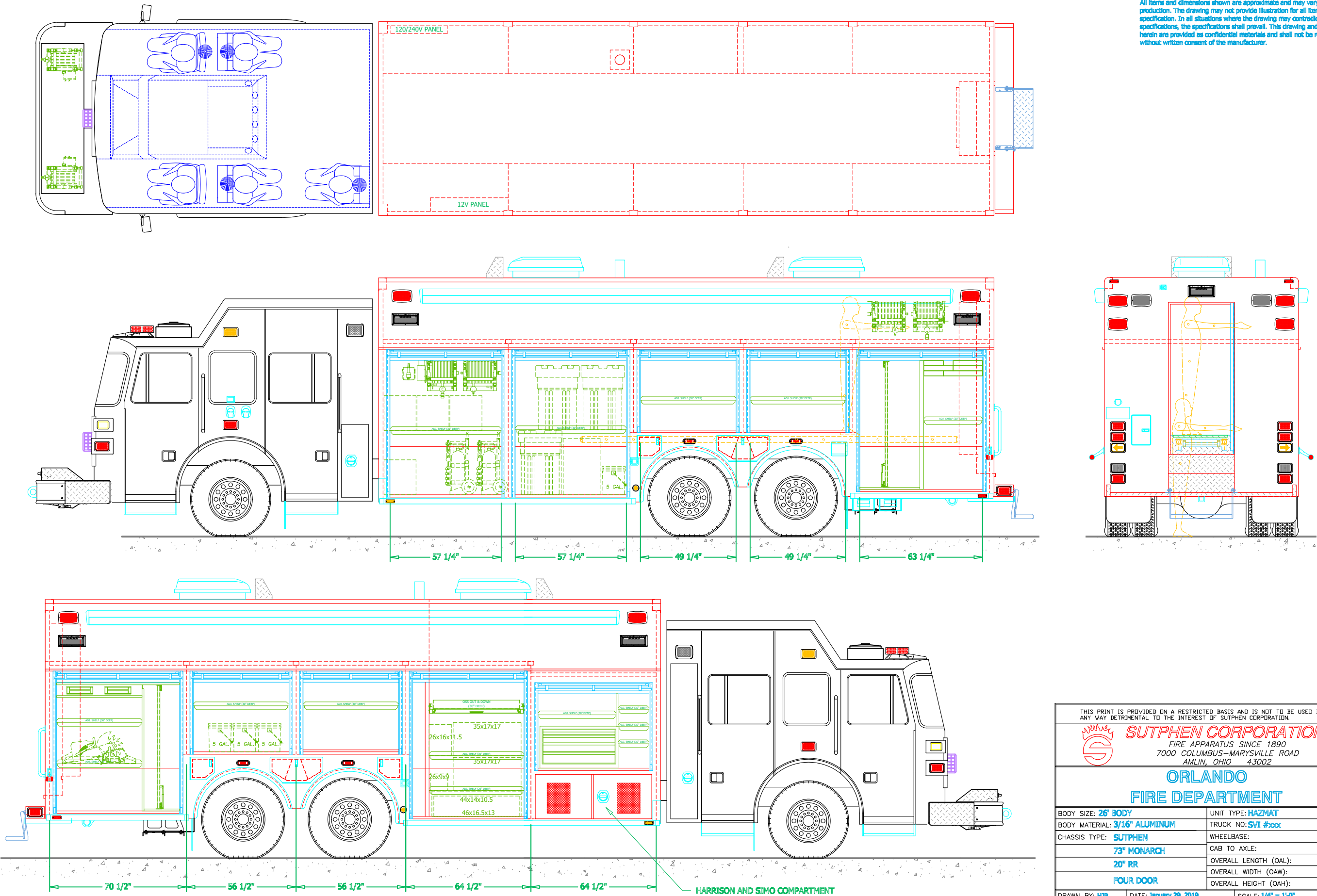



THIS PRINT IS PROVIDED ON A RESTRICTED BASIS AND IS NOT TO BE USED IN ANY WAY DETRIMENTAL TO THE INTEREST OF SUTPHEN CORPORATION.			
 <b>SUTPHEN CORPORATION</b> FIRE APPARATUS SINCE 1890 7000 COLUMBUS-MARYSVILLE ROAD AMLIN, OHIO 43002			
<b>ORLANDO FIRE DEPARTMENT</b>			
BODY SIZE: 26' BODY	UNIT TYPE: HAZMAT		
BODY MATERIAL: 3/16" ALUMINUM	TRUCK NO: SVI #xxx		
CHASSIS TYPE: SUTPHEN	WHEELBASE:	SEE DWG	
73" MONARCH	CAB TO AXLE:	SEE DWG	
20" RR	OVERALL LENGTH (OAL):	SEE DWG	
FOUR DOOR	OVERALL WIDTH (OAW):	SEE DWG	
	OVERALL HEIGHT (OAH):	SEE DWG	
DRAWN BY: HJR	DATE: January 29, 2019	SCALE: 1/4" = 1'-0"	
DRAWING NO: Orlando_FL_hz_PreCon2			SHEET 1 OF 3

PRELIMINARY DRAWING - FOR LAYOUT PURPOSES ONLY

REVISIONS			
REV	DESCRIPTION	DATE	BY

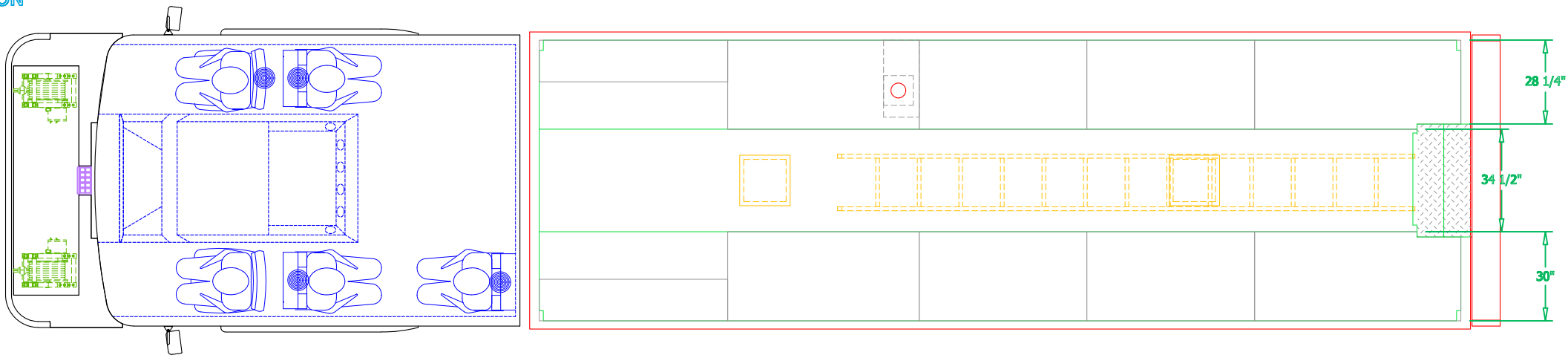
NOTE 1: Do not scale drawing. This drawing is for general truck configuration only. All items and dimensions shown are approximate and may vary with final production. The drawing may not provide illustration for all items in the specification. In all situations where the drawing may contradict the specifications, the specifications shall prevail. This drawing and all data herein are provided as confidential materials and shall not be reproduced without written consent of the manufacturer.



THIS PRINT IS PROVIDED ON A RESTRICTED BASIS AND IS NOT TO BE USED IN ANY WAY DETRIMENTAL TO THE INTEREST OF SUTPHEN CORPORATION.			
 <div><b>SUTPHEN CORPORATION</b> FIRE APPARATUS SINCE 1890 7000 COLUMBUS-MARYSVILLE ROAD AMLIN, OHIO 43002</div>			
<b>ORLANDO FIRE DEPARTMENT</b>			
BODY SIZE: <b>26' BODY</b>		UNIT TYPE: <b>HAZMAT</b>	
BODY MATERIAL: <b>3/16" ALUMINUM</b>		TRUCK NO: <b>SVI #xxx</b>	
CHASSIS TYPE: <b>SUTPHEN</b>		WHEELBASE: <b>SEE DWG</b>	
<b>73" MONARCH</b>		CAB TO AXLE: <b>SEE DWG</b>	
<b>20" RR</b>		OVERALL LENGTH (OAL): <b>SEE DWG</b>	
<b>FOUR DOOR</b>		OVERALL WIDTH (OAW): <b>SEE DWG</b>	
		OVERALL HEIGHT (OAH): <b>SEE DWG</b>	
DRAWN BY: <b>HJR</b>		SCALE: <b>1/4" = 1'-0"</b>	
DATE: <b>January 29, 2019</b>			
DRAWING NO: <b>Orlando_FL_hz_PreCon2</b>		SHEET <b>2</b> OF <b>3</b>	

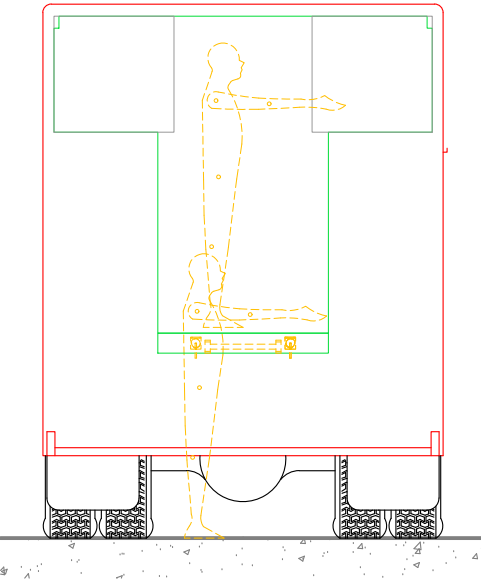
PRELIMINARY DRAWING - FOR LAYOUT PURPOSES ONLY

PLAN VIEW  
CROSS-SECTION

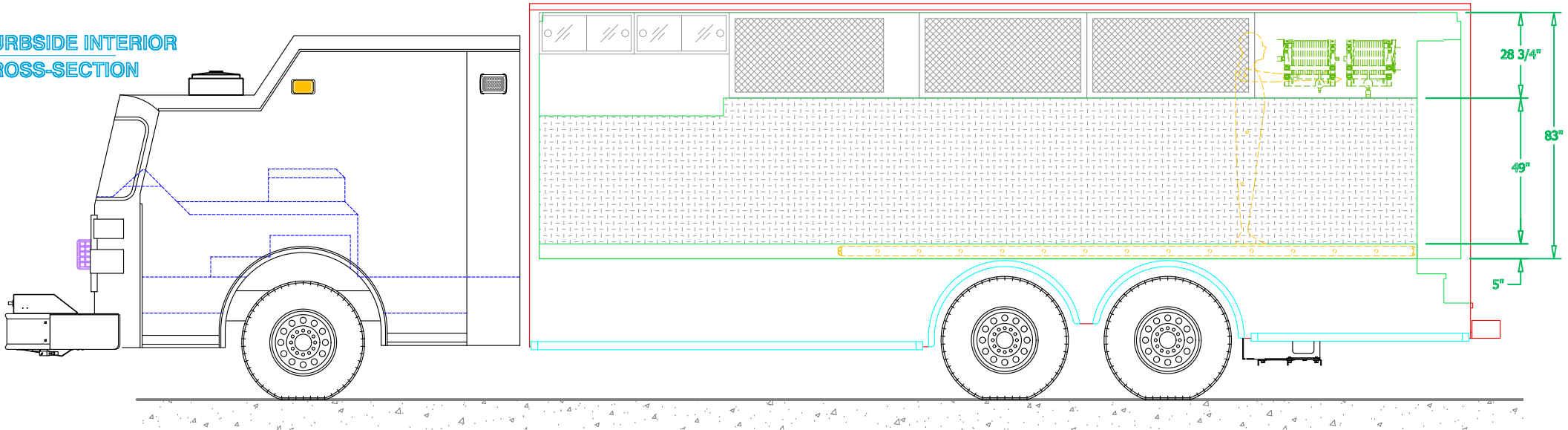


NOTE 1: Do not scale drawing. This drawing is for general truck configuration only. All items and dimensions shown are approximate and may vary with final production. The drawing may not provide illustration for all items in the specification. In all situations where the drawing may contradict the specifications, the specifications shall prevail. This drawing and all data herein are provided as confidential materials and shall not be reproduced without written consent of the manufacturer.

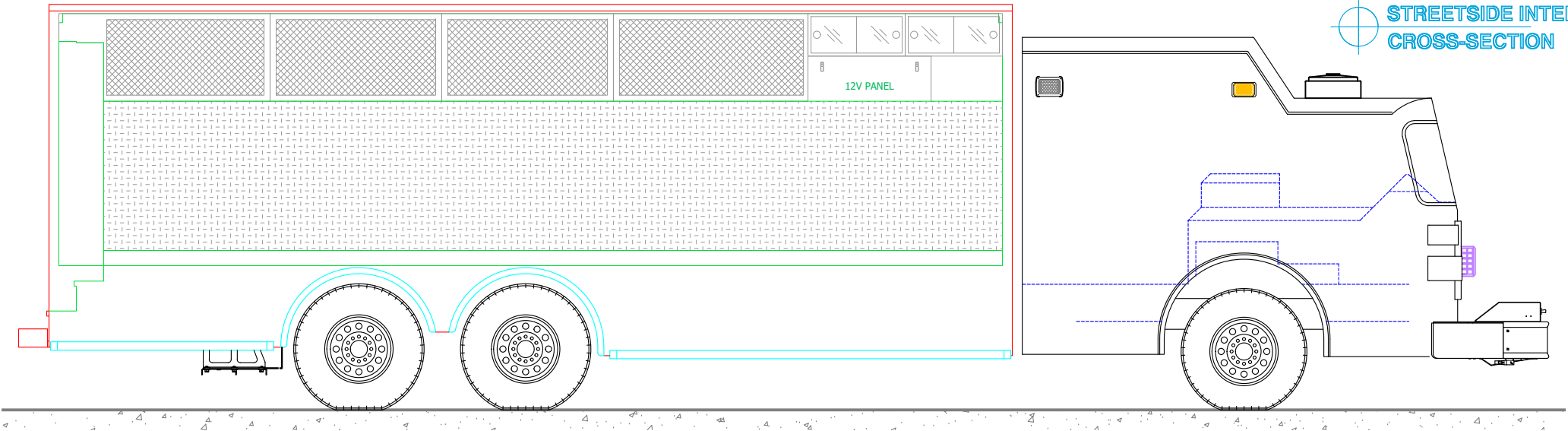
REAR VIEW  
CROSS-SECTION




CURBSIDE INTERIOR  
CROSS-SECTION



STREETSIDE INTERIOR  
CROSS-SECTION



THIS PRINT IS PROVIDED ON A RESTRICTED BASIS AND IS NOT TO BE USED IN ANY WAY DETRIMENTAL TO THE INTEREST OF SUTPHEN CORPORATION.			
		<b>SUTPHEN CORPORATION</b>  FIRE APPARATUS SINCE 1890 7000 COLUMBUS-MARYSVILLE ROAD AMLIN, OHIO 43002	
<b>ORLANDO FIRE DEPARTMENT</b>			
BODY SIZE: <b>26' BODY</b>		UNIT TYPE: <b>HAZMAT</b>	
BODY MATERIAL: <b>3/16" ALUMINUM</b>		TRUCK NO: <b>SVI #xxx</b>	
CHASSIS TYPE: <b>SUTPHEN</b>		WHEELBASE: <b>SEE DWG</b>	
<b>73" MONARCH</b>		CAB TO AXLE: <b>SEE DWG</b>	
<b>20" RR</b>		OVERALL LENGTH (OAL): <b>SEE DWG</b>	
<b>FOUR DOOR</b>		OVERALL WIDTH (OAW): <b>SEE DWG</b>	
		OVERALL HEIGHT (OAH): <b>SEE DWG</b>	
DRAWN BY: <b>HJR</b>		DATE: <b>January 29, 2019</b>	
		SCALE: <b>1/4" = 1'-0"</b>	
DRAWING NO: <b>Orlando_FL_hz_PreCon2</b>		SHEET <b>3</b> OF <b>3</b>	