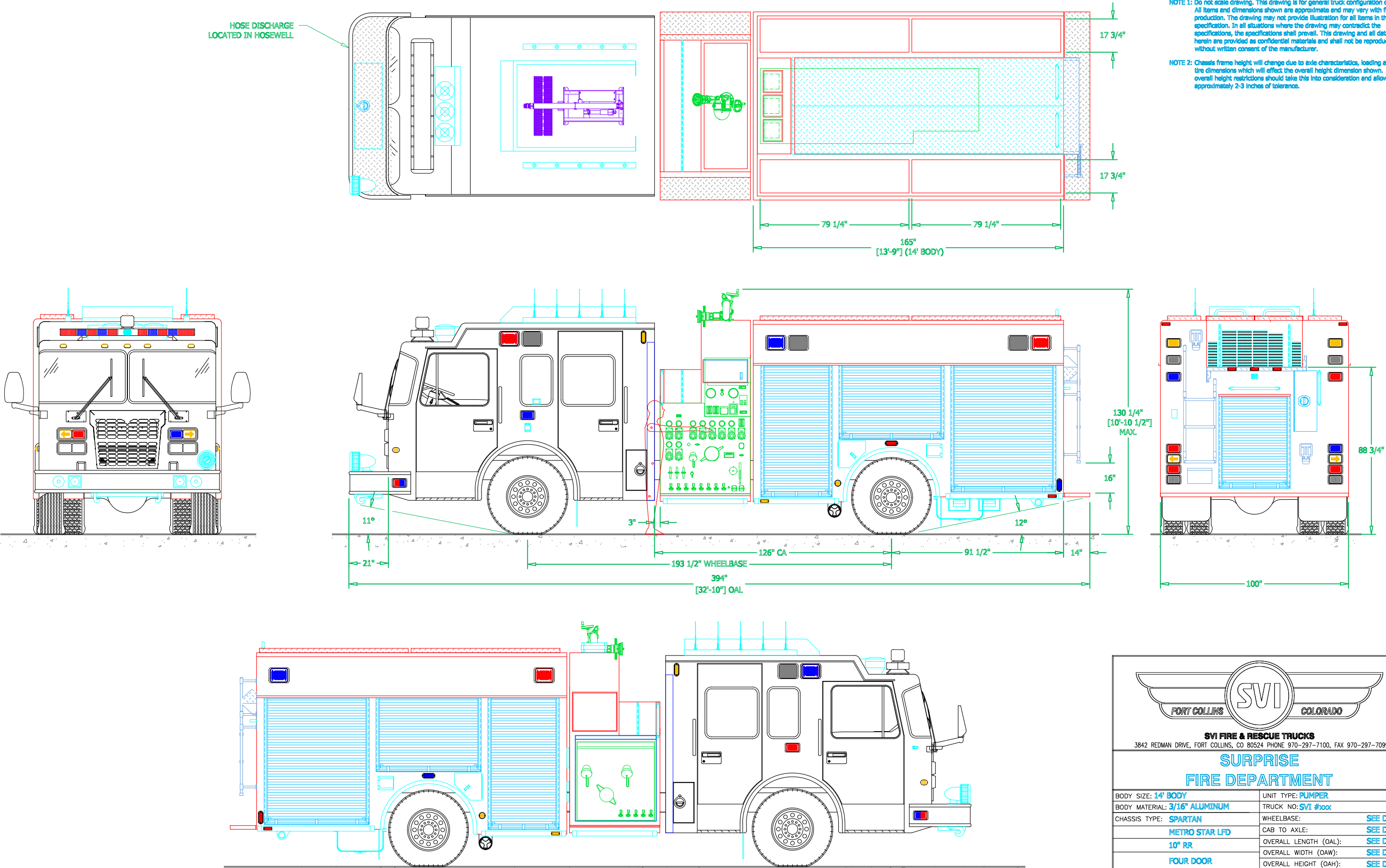


PRECONSTRUCTION PROPOSAL DRAWING, CHANGES PENDING CHANGE ORDER

REVISIONS			
REV	DESCRIPTION	DATE	BY

NOTE 1: Do not scale drawing. This drawing is for general truck configuration only. All items and dimensions shown are approximate and may vary with final production. The drawing may not provide illustration for all items in the specification. In all situations where the drawing may contradict the specifications, the specifications shall prevail. This drawing and all data herein are provided as confidential materials and shall not be reproduced without written consent of the manufacturer.

NOTE 2: Chassis frame height will change due to axle characteristics, loading and tire dimensions which will effect the overall height dimension shown. Any overall height restrictions should take this into consideration and allow approximately 2-3 inches of tolerance.



**SVI FIRE & RESCUE TRUCKS**  
3842 REDMAN DRIVE, FORT COLLINS, CO 80524 PHONE 970-297-7100, FAX 970-297-7099

**SURPRISE  
FIRE DEPARTMENT**

BODY SIZE: 14' BODY	UNIT TYPE: PUMPER
BODY MATERIAL: 3/16" ALUMINUM	TRUCK NO: SVI #xxx
CHASSIS TYPE: SPARTAN	WHEELBASE: SEE DWG
METRO STAR LFD	CAB TO AXLE: SEE DWG
10" RR	OVERALL LENGTH (OAL): SEE DWG
FOUR DOOR	OVERALL WIDTH (OAW): SEE DWG
	OVERALL HEIGHT (OAH): SEE DWG

DRAWN BY: HJR

DATE: September 10, 2019

SCALE: 1/4" = 1'-0"

DRAWING NO: 1112-Surprise\_AZ\_pm\_Precon1

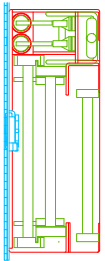
SHEET 1 OF 2

PRELIMINARY DRAWING - FOR LAYOUT PURPOSES ONLY

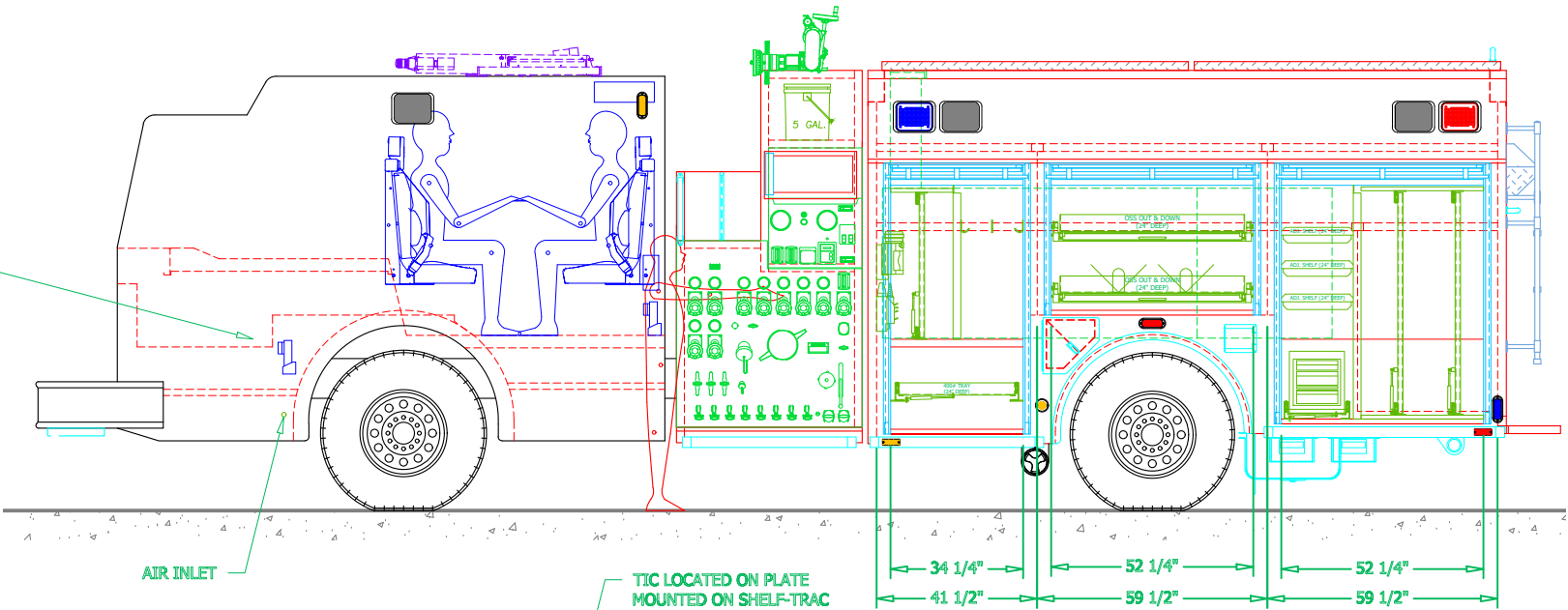
REVISIONS			
REV	DESCRIPTION	DATE	BY

NOTE 1: Do not scale drawing. This drawing is for general truck configuration only. All items and dimensions shown are approximate and may vary with final production. The drawing may not provide illustration for all items in the specification. In all situations where the drawing may contradict the specifications, the specifications shall prevail. This drawing and all data herein are provided as confidential materials and shall not be reproduced without written consent of the manufacturer.

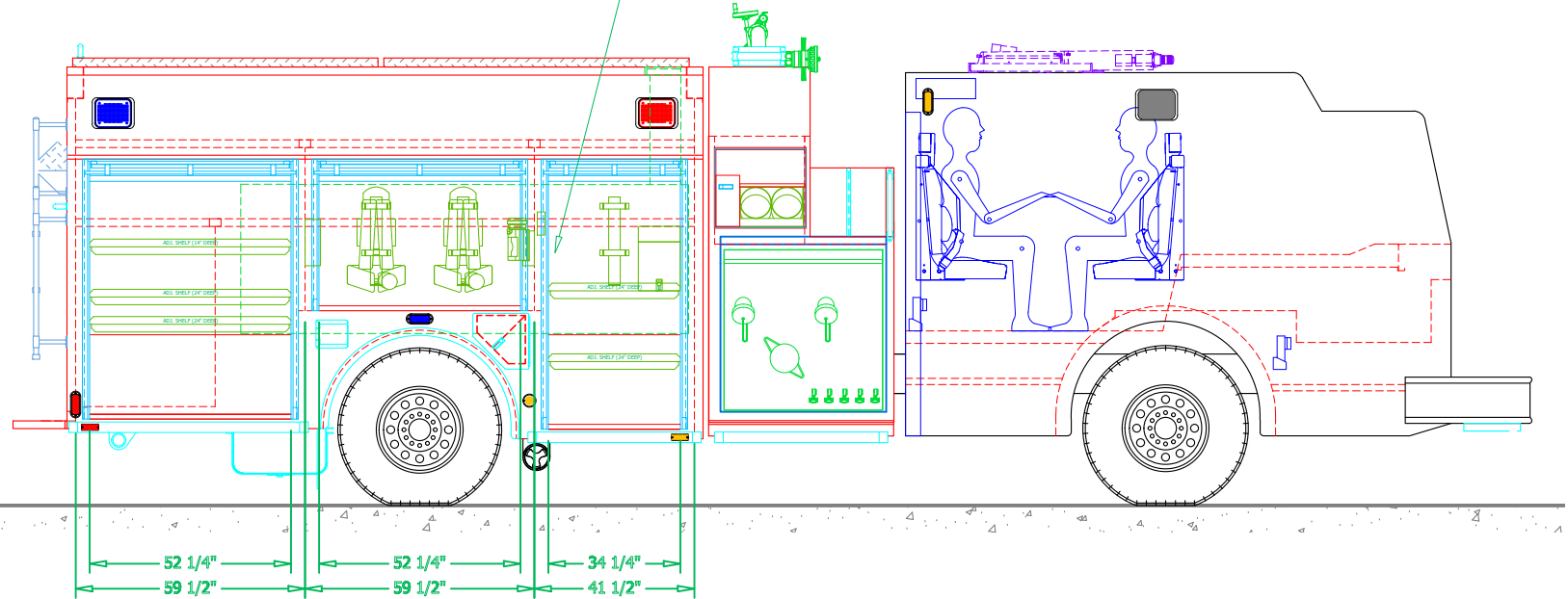
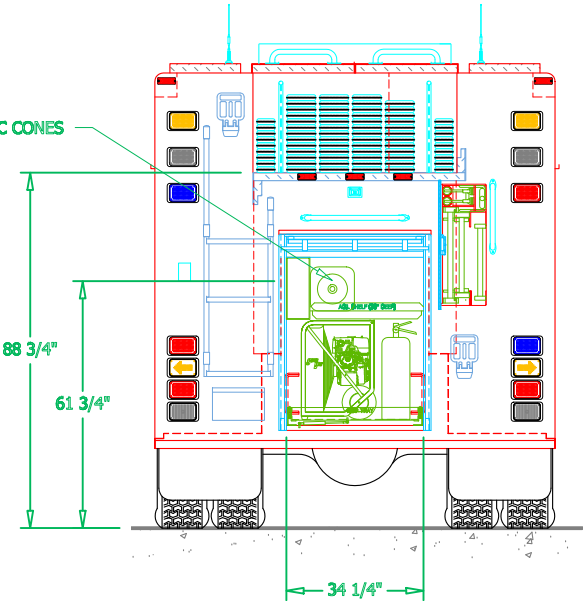
ENLARGED LADDER MODULE  
SCALE : 1/2" = 1'-0"



MOUNT AHEAD OF  
WINDOW WASHER OF FILL



TRAFFIC CONES



SVI FIRE & RESCUE TRUCKS  
3842 REDMAN DRIVE, FORT COLLINS, CO 80524 PHONE 970-297-7100, FAX 970-297-7099

SURPRISE  
FIRE DEPARTMENT

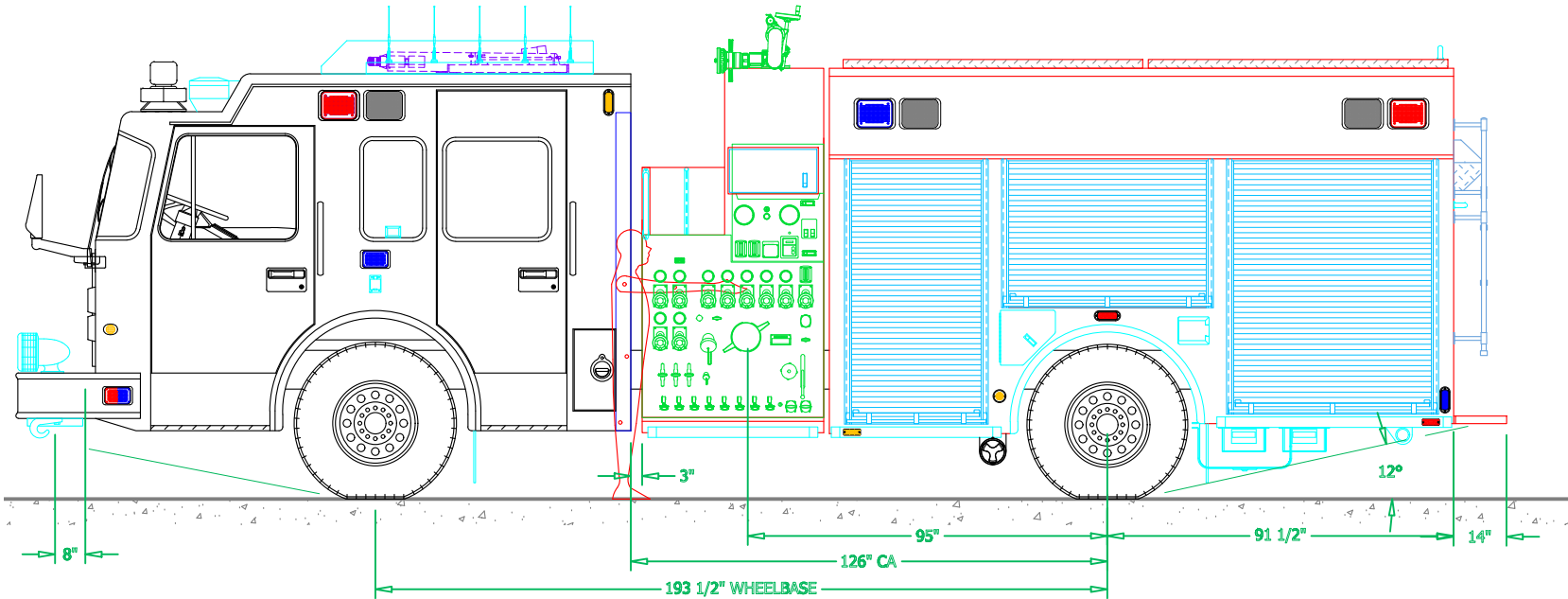
DRAWN BY: HDR DATE: Sep. 10, 19 SCALE: 1/4" = 1'-0"  
DRAWING NO: 1112-Surprise\_AZ\_pm\_Precon1

PRECONSTRUCTION PROPOSAL DRAWING, CHANGES PENDING CHANGE ORDER

REVISIONS			
REV	DESCRIPTION	DATE	BY

NOTE 1: Do not scale drawing. This drawing is for general truck configuration only. All items and dimensions shown are approximate and may vary with final production. The drawing may not provide illustration for all items in the specification. In all situations where the drawing may contradict the specifications, the specifications shall prevail. This drawing and all data herein are provided as confidential materials and shall not be reproduced without written consent of the manufacturer.

NOTE 2: Chassis frame height will change due to axle characteristics, loading and tire dimensions which will effect the overall height dimension shown. Any overall height restrictions should take this into consideration and allow approximately 2-3 inches of tolerance.



**SVI**  
FORT COLLINS COLORADO

**SVI FIRE & RESCUE TRUCKS**  
3842 REDMAN DRIVE, FORT COLLINS, CO 80524 PHONE 970-297-7100, FAX 970-297-7099

**SURPRISE  
FIRE DEPARTMENT**

BODY SIZE: <b>14' BODY</b>	UNIT TYPE: <b>PUMPER</b>
BODY MATERIAL: <b>3/16" ALUMINUM</b>	TRUCK NO: <b>SVI #xxx</b>
CHASSIS TYPE: <b>SPARTAN</b>	WHEELBASE: <b>SEE DWG</b>
<b>METRO STAR LFD</b>	CAB TO AXLE: <b>SEE DWG</b>
<b>10" RR</b>	OVERALL LENGTH (OAL): <b>SEE DWG</b>
<b>FOUR DOOR</b>	OVERALL WIDTH (OAW): <b>SEE DWG</b>
	OVERALL HEIGHT (OAH): <b>SEE DWG</b>

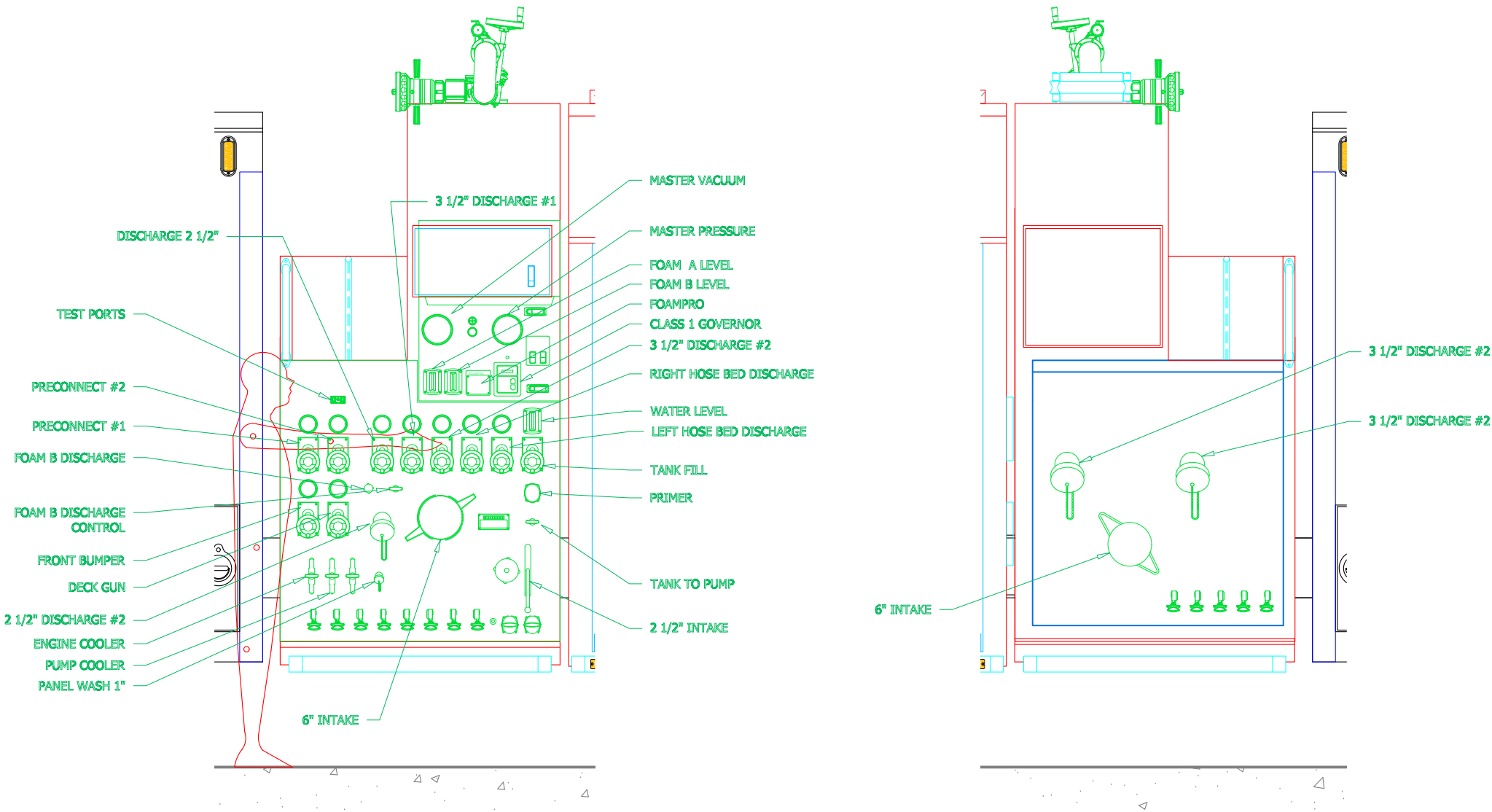
DRAWN BY: <b>HJR</b>	DATE: <b>September 10, 2019</b>	SCALE: <b>1/4" = 1'-0"</b>
DRAWING NO: <b>1112-Surprise_AZ_pm_Precon1</b>		SHEET <b>1</b> OF <b>1</b>


PRECONSTRUCTION PROPOSAL DRAWING, CHANGES PENDING CHANGE ORDER

REVISIONS			
REV	DESCRIPTION	DATE	BY

NOTE 1: Do not scale drawing. This drawing is for general truck configuration only. All items and dimensions shown are approximate and may vary with final production. The drawing may not provide illustration for all items in the specification. In all situations where the drawing may contradict the specifications, the specifications shall prevail. This drawing and all data herein are provided as confidential materials and shall not be reproduced without written consent of the manufacturer.

NOTE 2: Chassis frame height will change due to axle characteristics, loading and tire dimensions which will effect the overall height dimension shown. Any overall height restrictions should take this into consideration and allow approximately 2-3 inches of tolerance.





**SVI FIRE & RESCUE TRUCKS**  
3842 REDMAN DRIVE, FORT COLLINS, CO 80524 PHONE 970-297-7100, FAX 970-297-7099

**SURPRISE  
FIRE DEPARTMENT**

BODY SIZE: 14' BODY	UNIT TYPE: PUMPER
BODY MATERIAL: 3/16" ALUMINUM	TRUCK NO: SVI #xxx
CHASSIS TYPE: SPARTAN	WHEELBASE: SEE DWG
METRO STAR LFD	CAB TO AXLE: SEE DWG
10" RR	OVERALL LENGTH (OAL): SEE DWG
FOUR DOOR	OVERALL WIDTH (OAW): SEE DWG
	OVERALL HEIGHT (OAH): SEE DWG

DRAWN BY: HJR

DATE: September 10, 2019

SCALE: 1/4" = 1'-0"

DRAWING NO: 1112-Surprise\_AZ\_pm\_Precon1

SHEET 1 OF 1