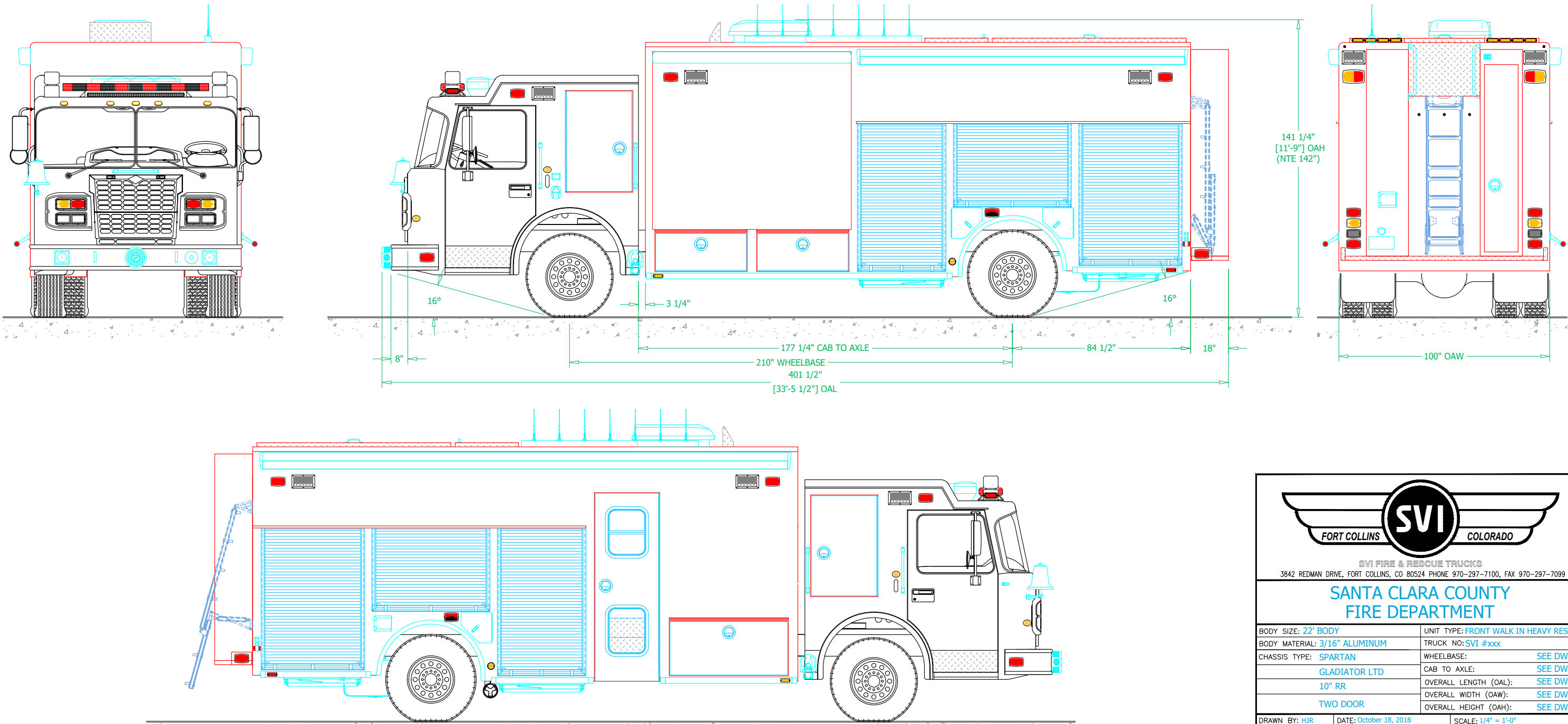


PRELIMINARY DRAWING - FOR LAYOUT PURPOSES ONLY

REVISIONS			
REV	DESCRIPTION	DATE	BY

NOTE 1: Do not scale drawing. This drawing is for general truck configuration only. All items and dimensions shown are approximate and may vary with final production. The drawing may not provide illustration for all items in the specification. In all situations where the drawing may contradict the specifications, the specifications shall prevail. This drawing and all data herein are provided as confidential materials and shall not be reproduced without written consent of the manufacturer.

NOTE 2: Chassis frame height will change due to axle characteristics, loading and tire dimensions which will effect the overall height dimension shown. Any overall height restrictions should take this into consideration and allow approximately 2-3 inches of tolerance.



SVI FIRE & RESCUE TRUCKS
3842 REDMAN DRIVE, FORT COLLINS, CO 80524 PHONE 970-297-7100, FAX 970-297-7099

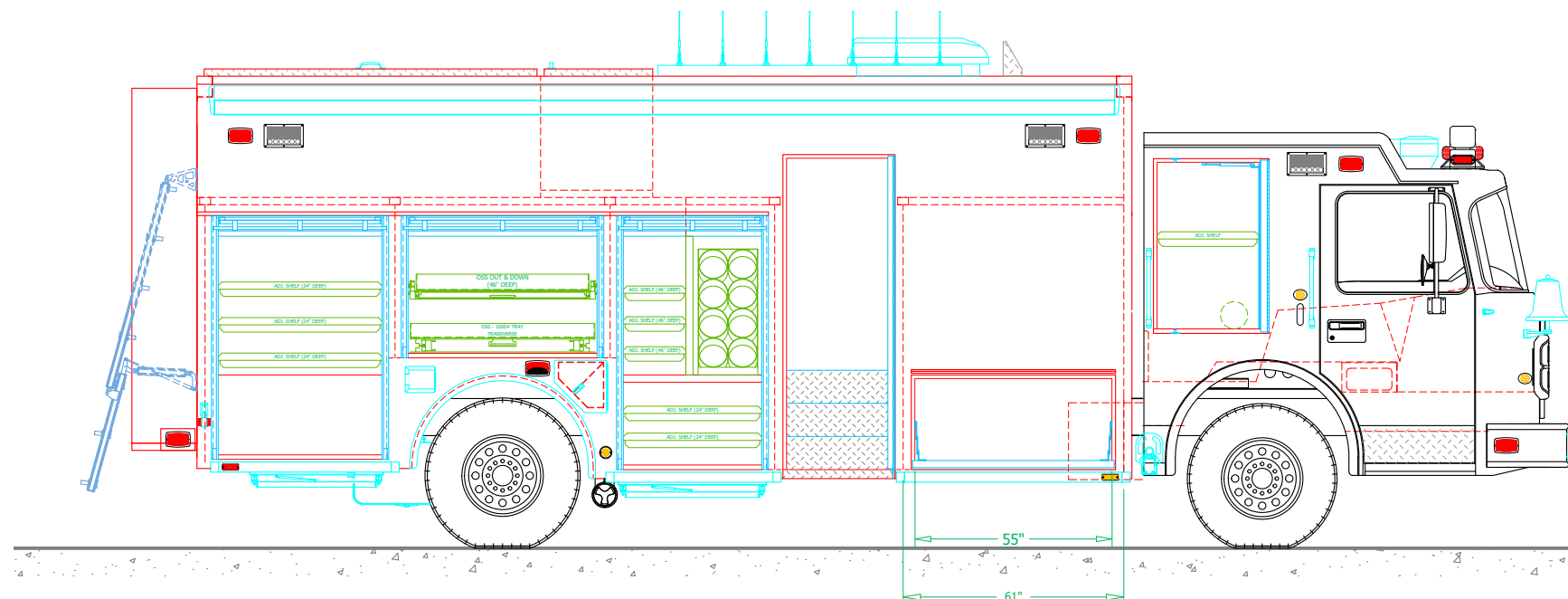
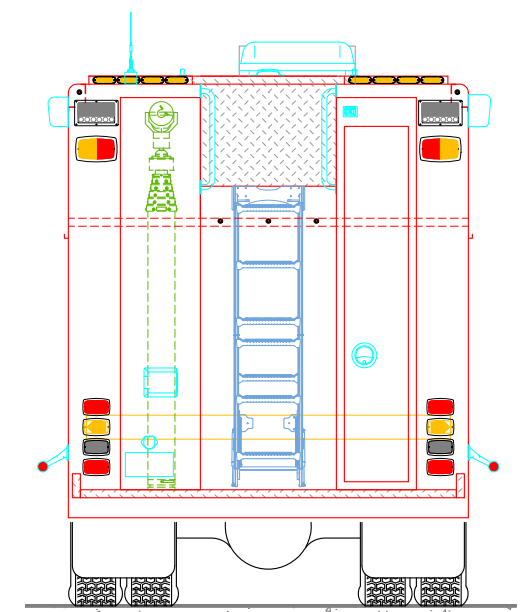
SANTA CLARA COUNTY
FIRE DEPARTMENT

BODY SIZE: 22' BODY	UNIT TYPE: FRONT WALK IN HEAVY RESCUE
BODY MATERIAL: 3/16" ALUMINUM	TRUCK NO: SVI #xxx
CHASSIS TYPE: SPARTAN	WHEELBASE: SEE DWG
GLADIATOR LTD	CAB TO AXLE: SEE DWG
10" RR	OVERALL LENGTH (OAL): SEE DWG
TWO DOOR	OVERALL WIDTH (OAW): SEE DWG
	OVERALL HEIGHT (OAH): SEE DWG

DRAWN BY: HJR	DATE: October 18, 2018	SCALE: 1/4" = 1'-0"
DRAWING NO: SantaClaraCo_CA_hm_PreCon1.dwg		SHEET 1 OF 3

REVISIONS			
REV	DESCRIPTION	DATE	BY

This technical floor plan illustrates the interior layout of a vehicle, divided into three main sections: the driver's side (left), the front passenger area (middle), and the rear cargo/passenger area (right). The driver's side features a steering wheel, dashboard, and two blue-outlined seats. The front passenger area includes a large blue-outlined seat and a smaller blue-outlined seat. The rear cargo/passenger area is divided into three sections by red dashed lines, with a blue-outlined seat in the center. The plan uses various colors (blue, red, green) and line styles (solid, dashed) to delineate different components and zones. A scale bar is located at the bottom right, and a north arrow is at the bottom left.



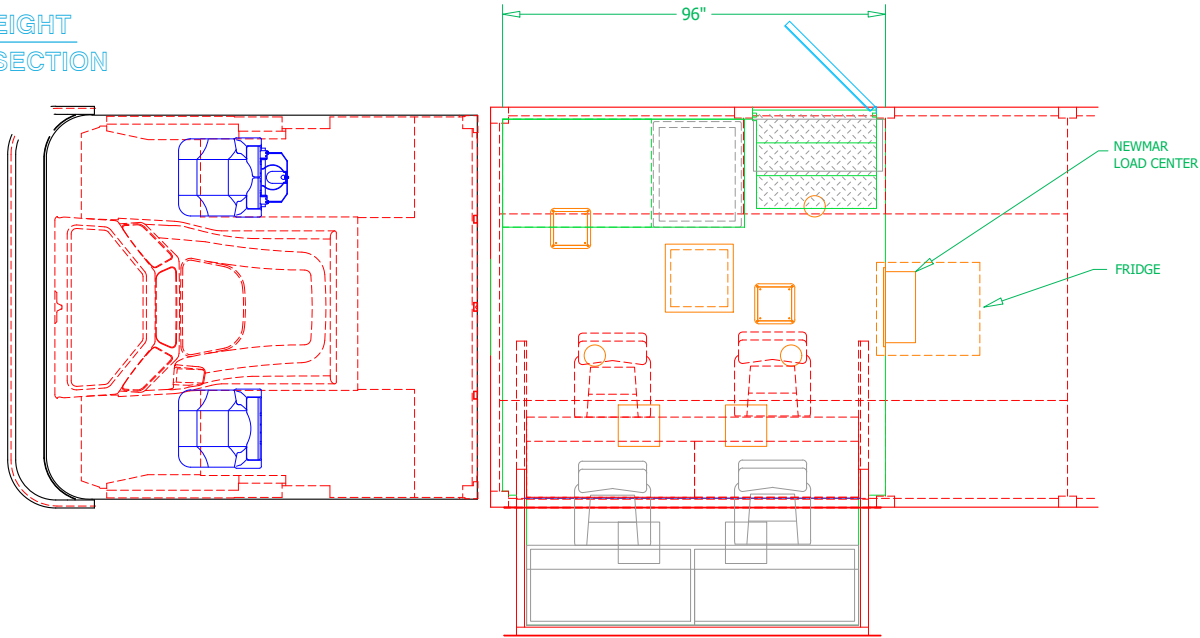
DRAWN BY: HJR	DATE: October 18, 2018	SCALE: 1/4" = 1'-0"
DRAWING NO: SantaClaraCo_CA_hm_PreCon1		SHEET 2 OF 3

PRELIMINARY DRAWING - FOR LAYOUT PURPOSES ONLY

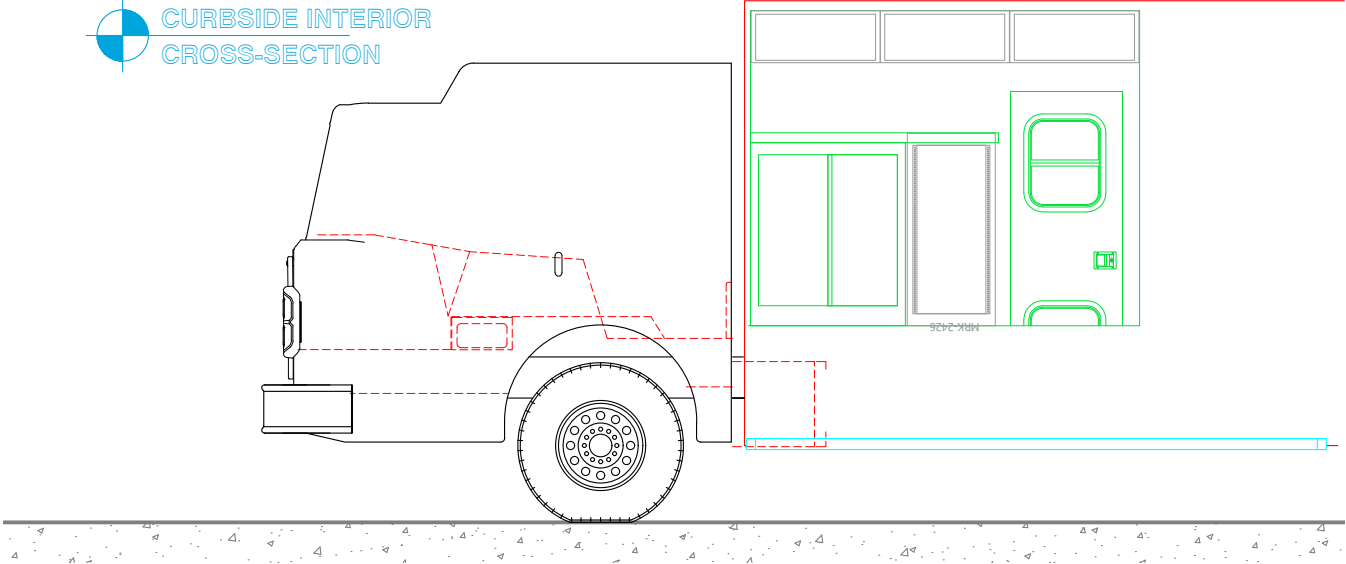
REVISIONS			
REV	DESCRIPTION	DATE	BY

NOTE 1: Do not scale drawing. This drawing is for general truck configuration only. All items and dimensions shown are approximate and may vary with final production. The drawing may not provide illustration for all items in the specification. In all situations where the drawing may contradict the specifications, the specifications shall prevail. This drawing and all data herein are provided as confidential materials and shall not be reproduced without written consent of the manufacturer.

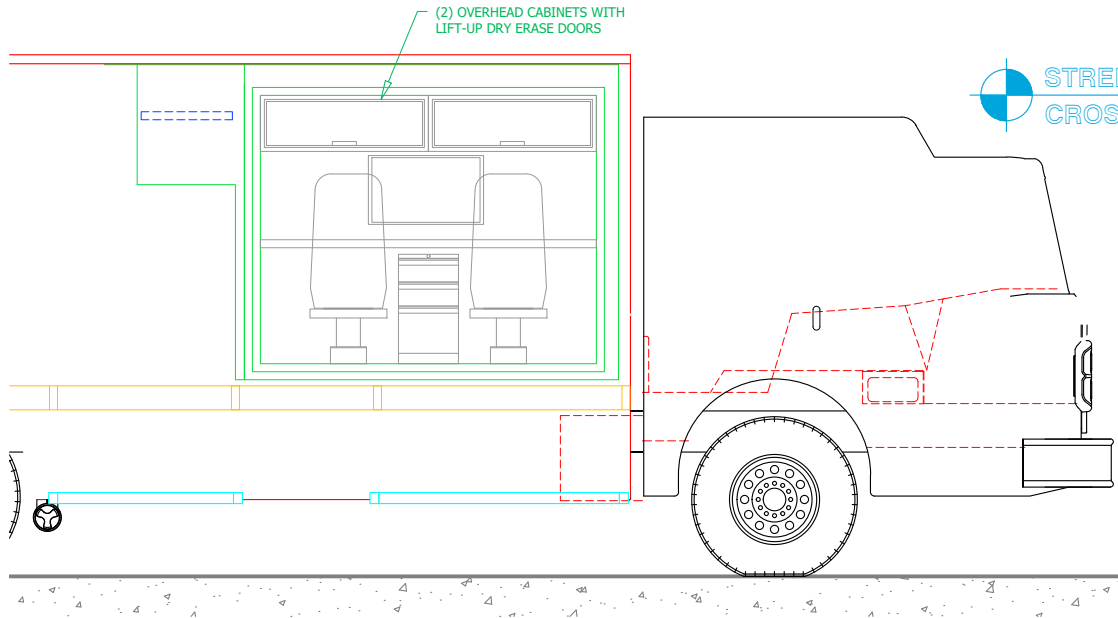
DESK HEIGHT
CROSS-SECTION



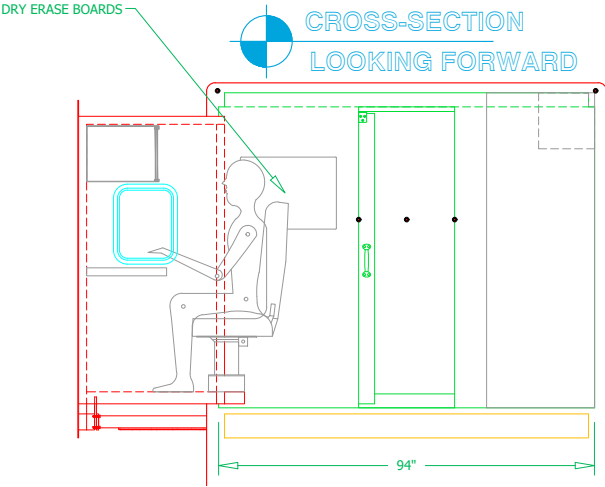
CURBSIDE INTERIOR
CROSS-SECTION



STREETSIDE INTERIOR
CROSS-SECTION



CROSS-SECTION
LOOKING FORWARD



CROSS-SECTION
LOOKING REARWARD



SVI FIRE & RESCUE TRUCKS
3842 REDMAN DRIVE, FORT COLLINS, CO 80524 PHONE 970-297-7100, FAX 970-297-7099

SANTA CLARA COUNTY
FIRE DEPARTMENT

DRAWN BY: HJR	DATE: October 18, 2018	SCALE: 1/4" = 1'-0"
DRAWING NO: SantaClaraCo_CA_hm_PreCon1	SHEET 3 OF 3	