



Surprise, AZ Fire-Medical Department LFD Pumper #1112

Chassis

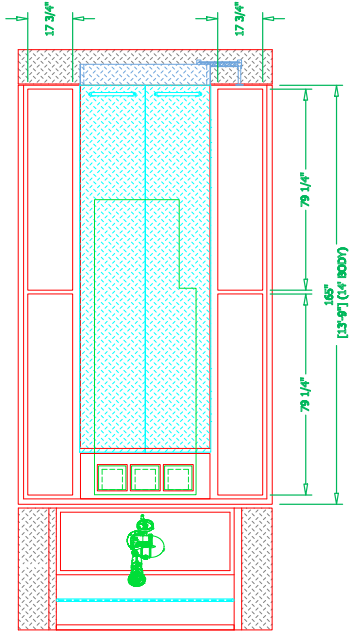
Cab: Spartan Metro Star 10" Raised Roof
Engine: Cummins L9, 450HP
Transmission: Allison EVS 3000
Wheelbase: 194"

Body

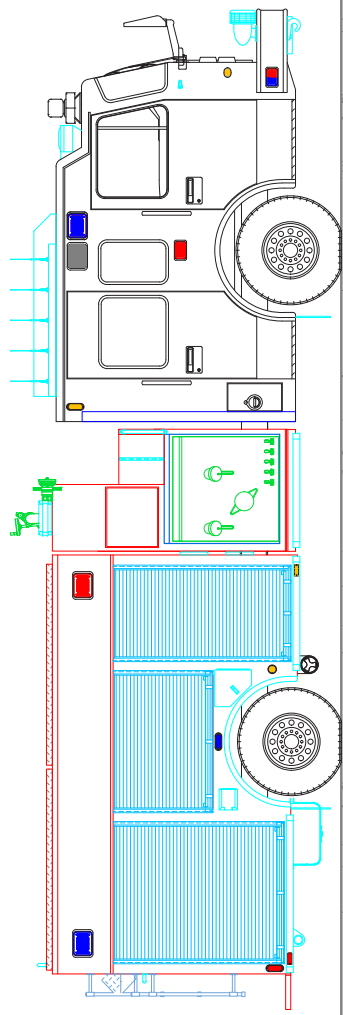
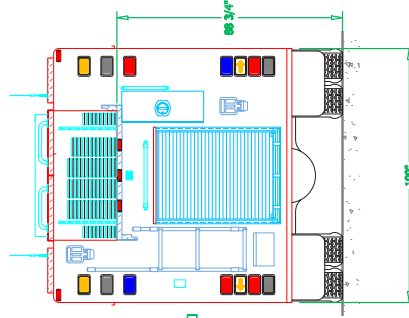
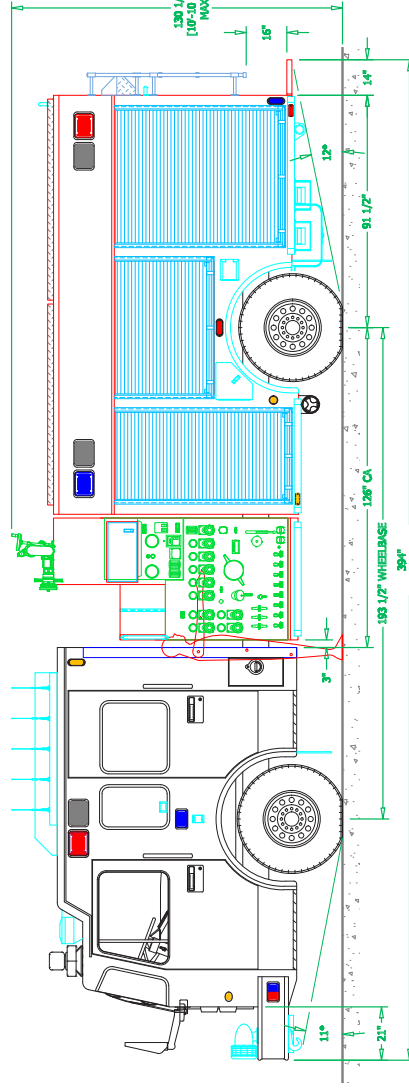
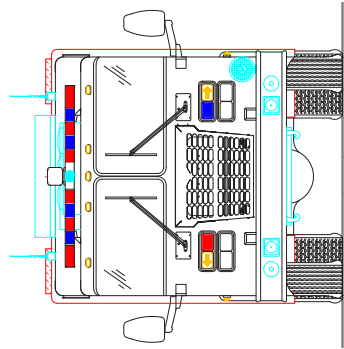
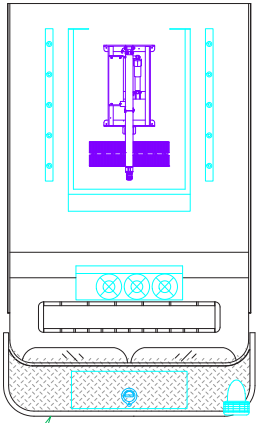
Material: Aluminum
Body Length: 14'
Overall Height: 10' - 11"
Overall Length: 32' - 10"

Features:

FoamPro 2001 Foam System
Waterous CU Series Full-Body Fire Pump
Deck Gun Mounted on Manually Telescopic Waterway
Command Light SL Series Light Tower
OnScene Solutions Aluminum Heavy-Duty Cargo Slides
V-MUX Vista IV Multiplex System
MediRedi Drug Cooler
Hannay SBEF Booster Hose Reel with Power Rewind
OnScene Solutions LED Compartment Lighting
Audiovox Voyager Heavy-Duty Rearview Camera
Aluminum Hose Bed Cover



HOSE DISCHARGE
LOCATED IN HOSEWELL



See more at svitrucks.com/1100