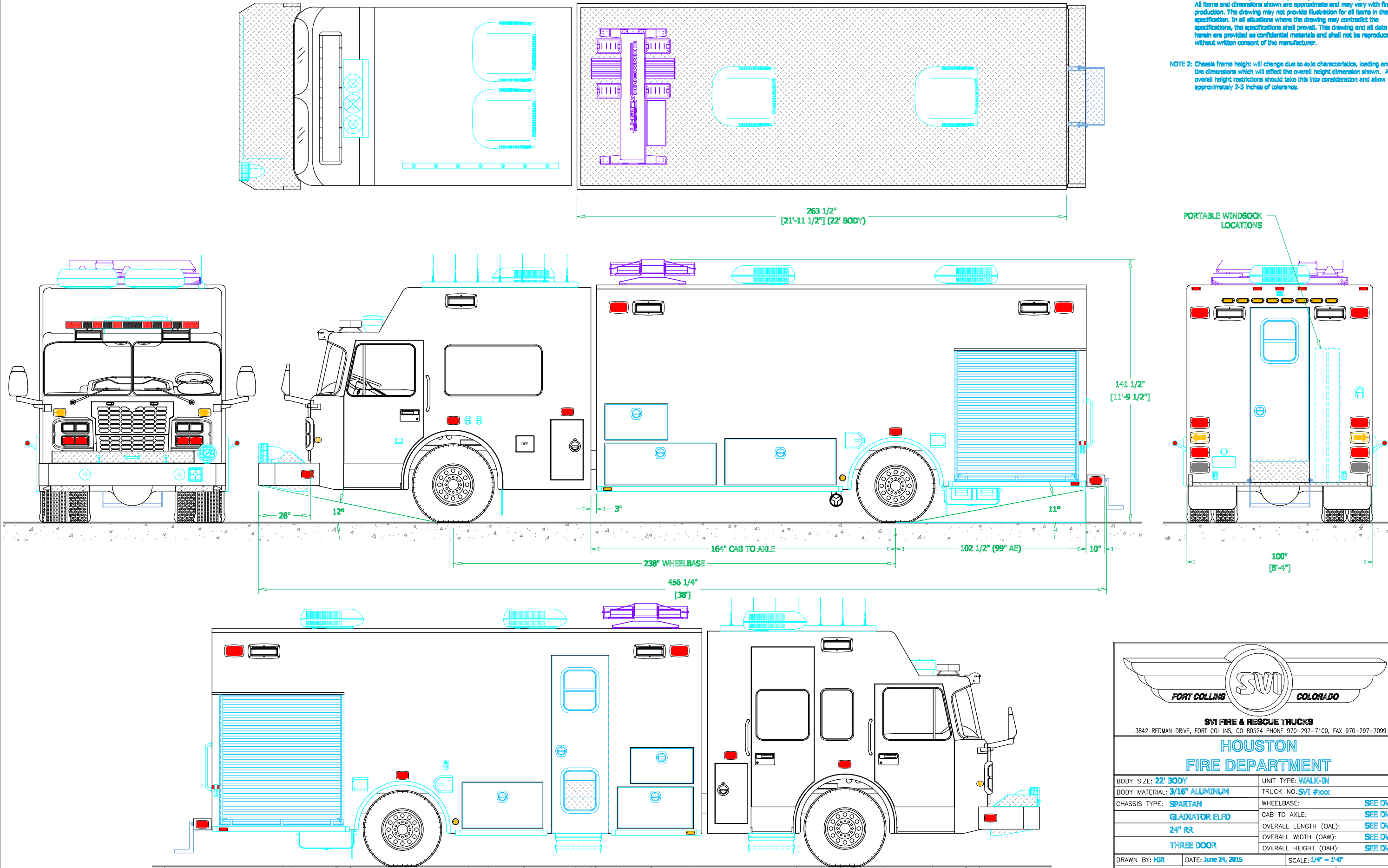



PRELIMINARY DRAWING - FOR LAYOUT PURPOSES ONLY

REVISIONS			
REV	DESCRIPTION	DATE	BY

NOTE 1: Do not scale drawing. This drawing is for general truck configuration only. All items and dimensions shown are approximate and may vary with final production. The drawing may not provide illustration for all items in the specification. In all situations where the drawing may contradict the specifications, the specifications shall prevail. This drawing and all data herein are provided as confidential materials and shall not be reproduced without written consent of the manufacturer.

NOTE 2: Chassis frame height will change due to axle characteristics, loading and tire dimensions which will effect the overall height dimension shown. Any overall height restrictions should take this into consideration and allow approximately 2-3 inches of tolerance.





SVI
FORT COLLINS COLORADO

SVI FIRE & RESCUE TRUCKS
3842 REDMAN DRIVE, FORT COLLINS, CO 80524 PHONE 970-297-7100, FAX 970-297-7099

HOUSTON
FIRE DEPARTMENT

BODY SIZE: 22' BODY	UNIT TYPE: WALK-IN
BODY MATERIAL: 3/16" ALUMINUM	TRUCK NO: SVI #1000
CHASSIS TYPE: SPARTAN	WHEELBASE: SEE DWG
GLADIATOR ELFD	CAB TO AXLE: SEE DWG
24" RR	OVERALL LENGTH (OAL): SEE DWG
THREE DOOR	OVERALL WIDTH (OAW): SEE DWG
	OVERALL HEIGHT (OAH): SEE DWG

DRAWN BY: **HJR**

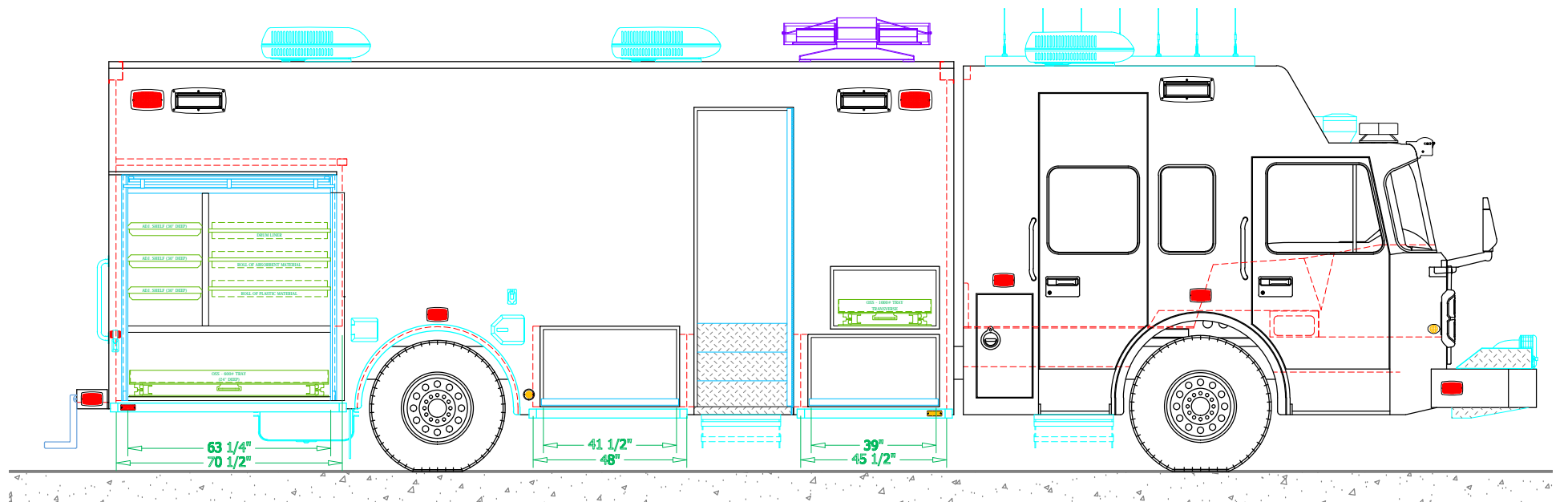
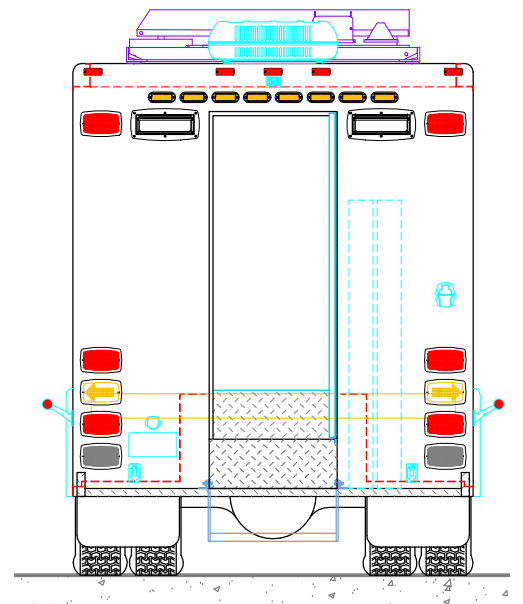
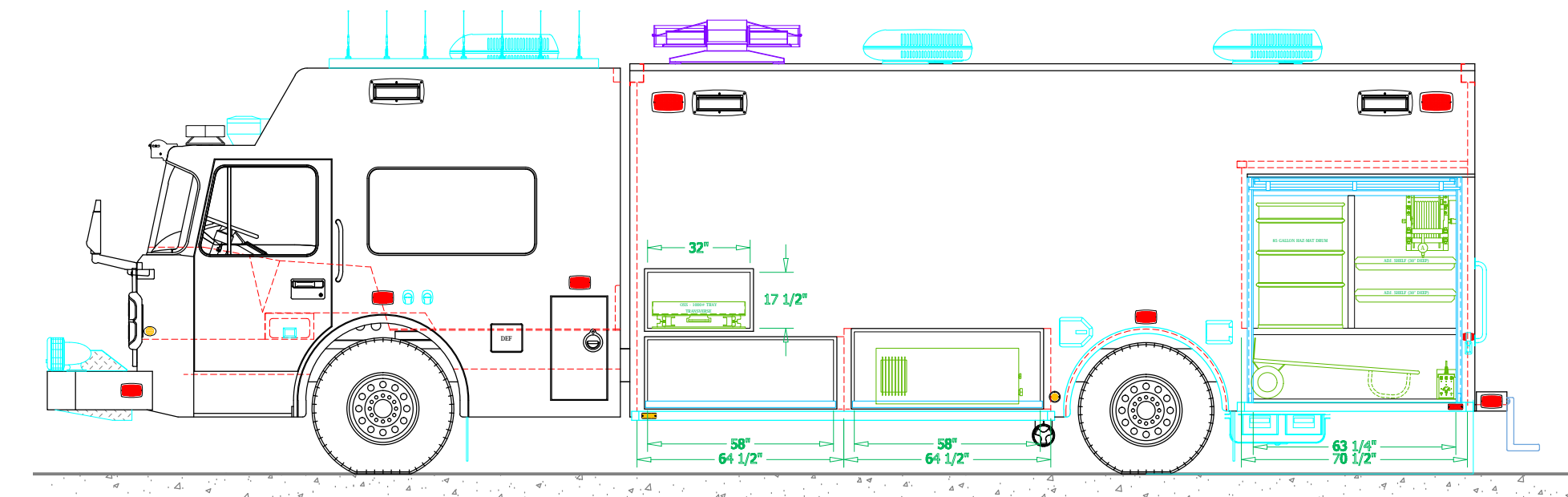
DATE: **June 24, 2015**

SCALE: **1/4" = 1'-0"**

DRAWING NO: **Houston_TX_hz_PreCon1**

SHEET **1** OF **3**

REVISIONS			
REV	DESCRIPTION	DATE	BY



SVI FIRE & RESCUE TRUCKS
3842 REDMAN DRIVE, FORT COLLINS, CO 80524 PHONE 970-297-7100, FAX 970-297-7099

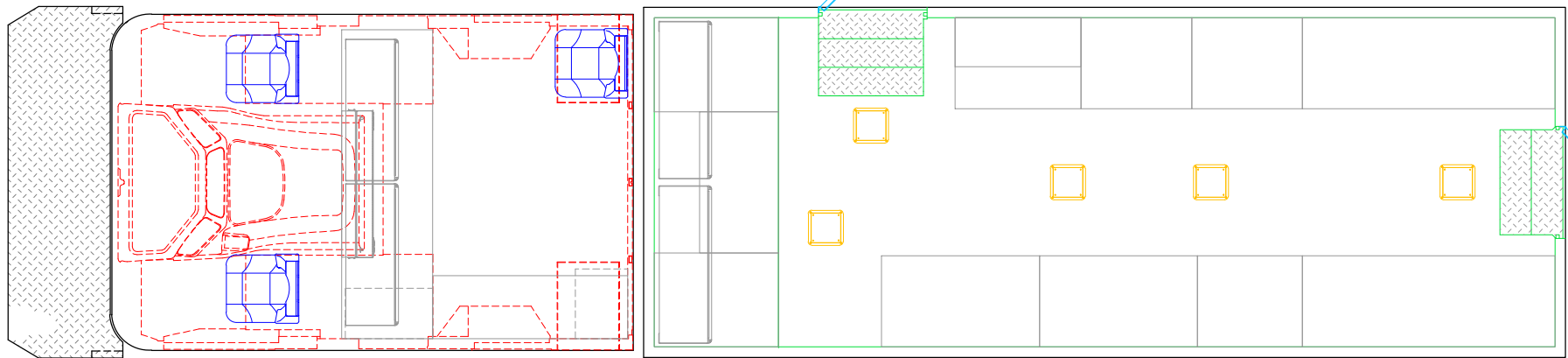
HOUSTON
FIRE DEPARTMENT

DRAWN BY: HJR	DATE: June 24, 2015	SCALE: 1/4" = 1'-0"
DRAWING NO: Houston TX Hz PreCon1		S

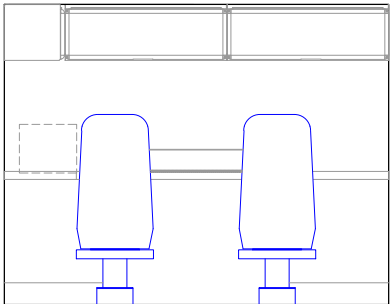
SHEET 2 OF 3

PRELIMINARY DRAWING - FOR LAYOUT PURPOSES ONLY

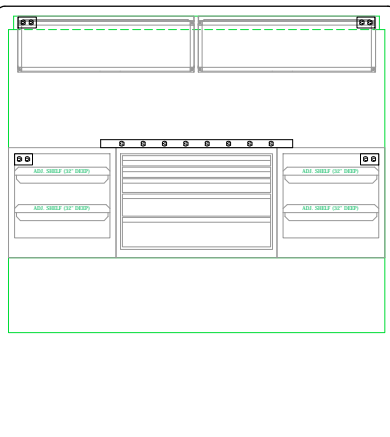
PLAN VIEW
CROSS-SECTION



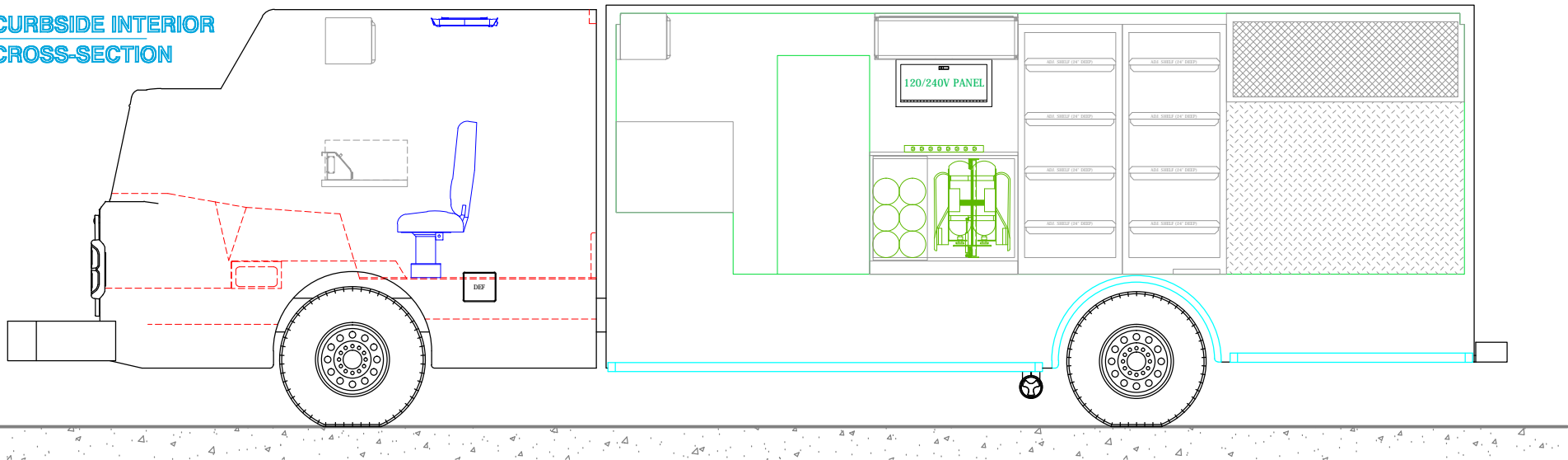
REAR VIEW
CROSS-SECTION



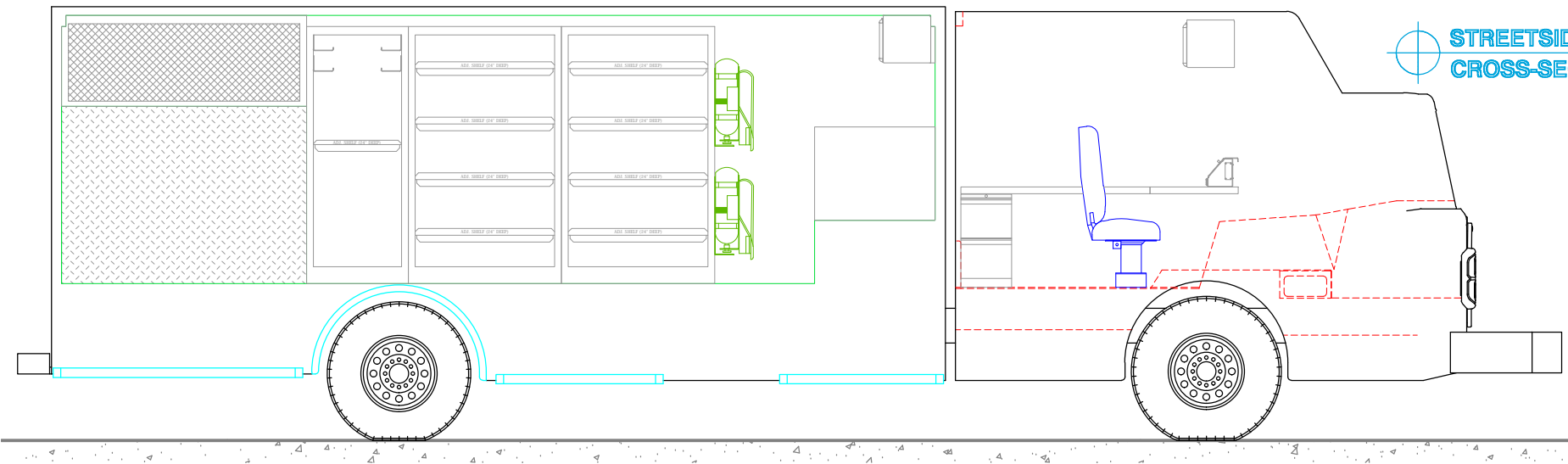
REAR VIEW
CROSS-SECTION



CURBSIDE INTERIOR
CROSS-SECTION



STREETSIDE INTERIOR
CROSS-SECTION



NOTE 1: Do not scale drawing. This drawing is for general truck configuration only. All items and dimensions shown are approximate and may vary with final production. The drawing may not provide illustration for all items in the specification. In all situations where the drawing may contradict the specifications, the specifications shall prevail. This drawing and all data herein are provided as confidential materials and shall not be reproduced without written consent of the manufacturer.



SVI FIRE & RESCUE TRUCKS
3842 REDMAN DRIVE, FORT COLLINS, CO 80524 PHONE 970-297-7100, FAX 970-297-7099

**HOUSTON
FIRE DEPARTMENT**

DRAWN BY: HDR	DATE: June 24, 2015	SCALE: 1/4" = 1'-0"
DRAWING NO: Houston_TX_ftr_Prelim		SHEET 3 OF 3