



## Franklin, TN T6 Brush Truck #1144

### Chassis

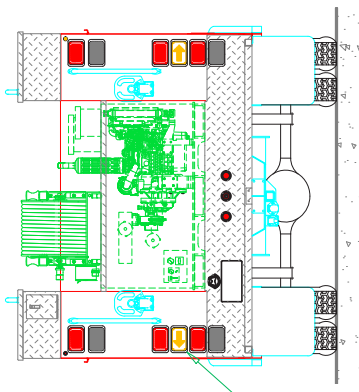
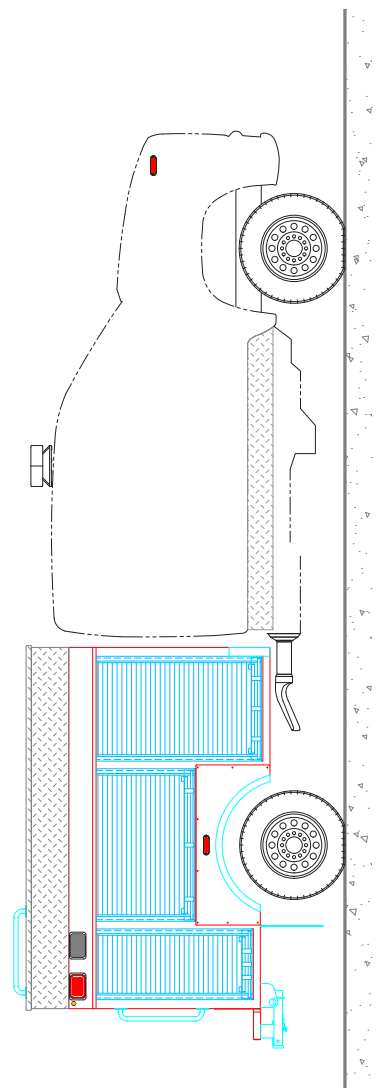
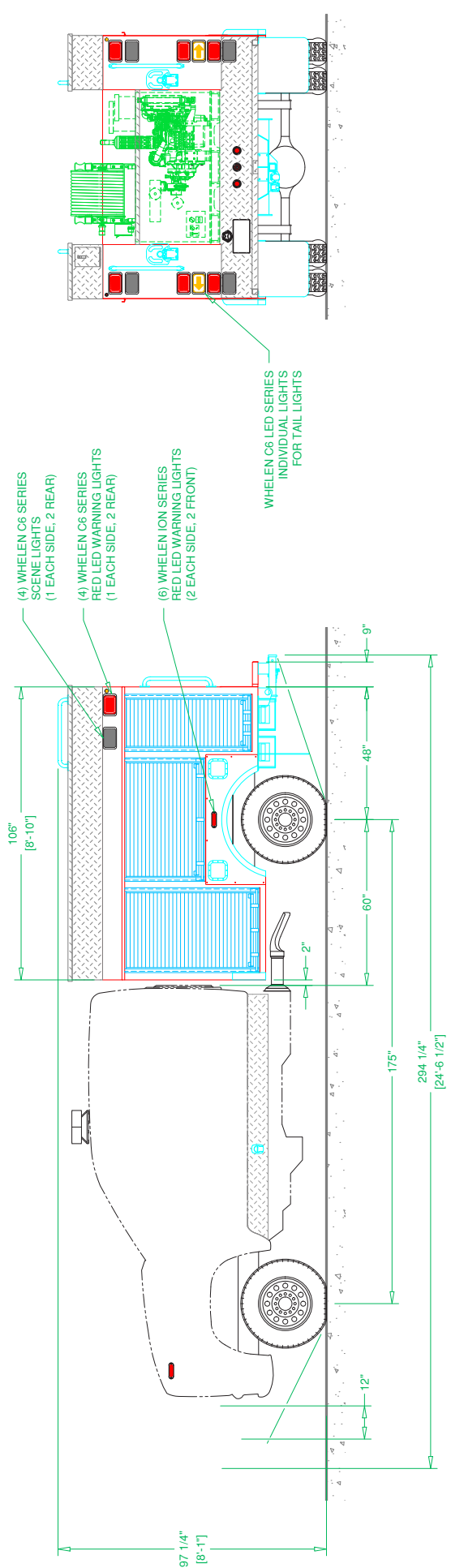
Cab: Chevy Silverado MD, Crew Cab, 4x4  
Engine: Duramax 6.6L Turbo-Diesel V8  
Transmission: Allison EVS 2700  
Wheelbase: 175"

### Body

Material: Aluminum  
Body Length: 8'  
Overall Height: 8' 1"  
Overall Length: 24' 6"

### Features

300-Gal. Poly Tank  
Darley Fast Foam System  
Custom Front Bumper to Accommodate Tilt Hood  
Cab-Controlled Front-Bumper Ground-Sweep Nozzles  
Weldon V-MUX Multiplexed 12-Volt Electrical System  
Hannay F4000 Hose Reel  
Aluminum Slideout Smooth Vertical Tool Board(s)  
Warn Zeon 8,000-lb. 12 VDC Electric Winch  
Whelen C6 Series Super-LED Scene Lights  
OnScene Solutions LED Compartment Lights



See more at [svitrucks.com](http://svitrucks.com)