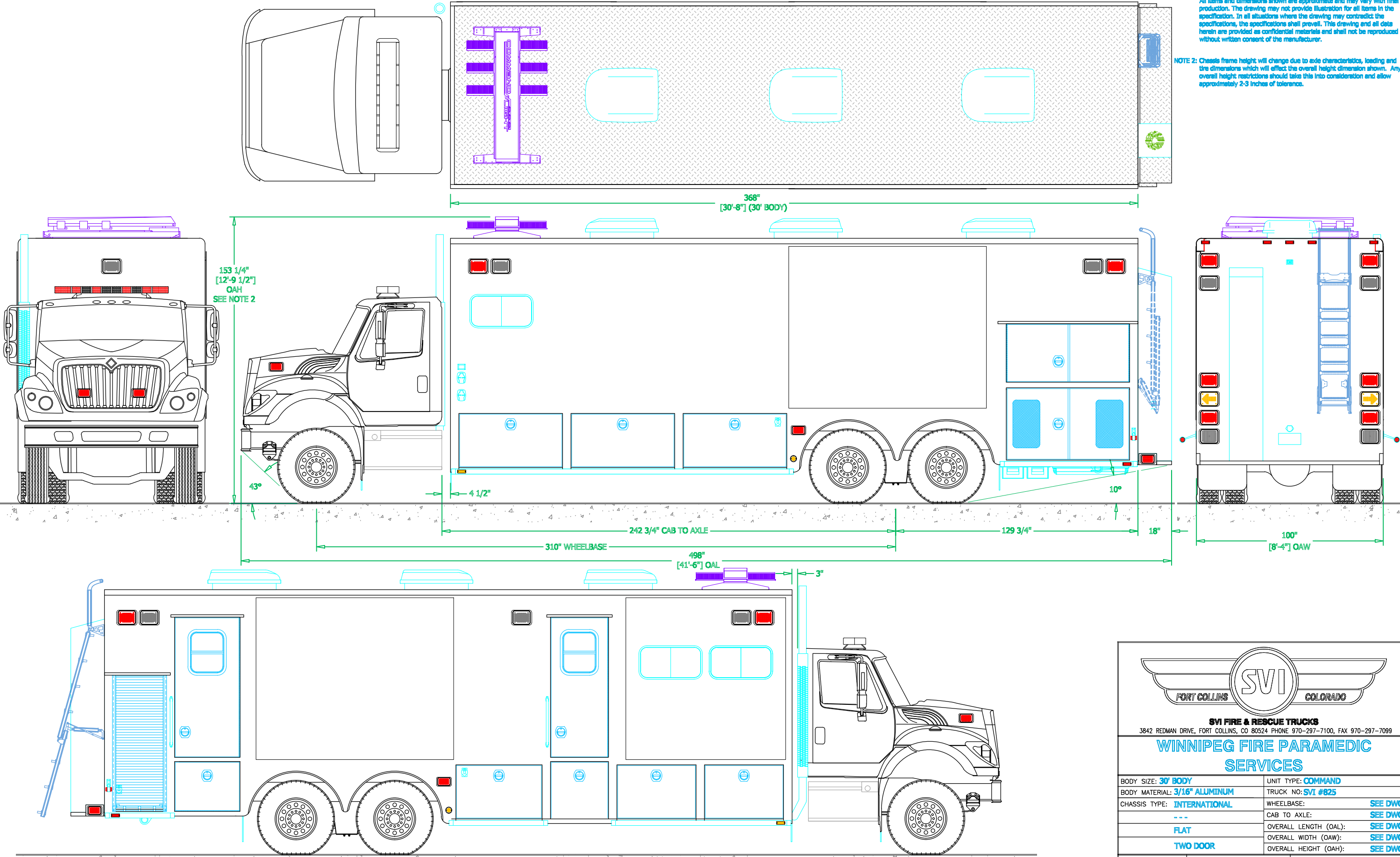



PRELIMINARY DRAWING - FOR LAYOUT PURPOSES ONLY

REVISIONS			
REV	DESCRIPTION	DATE	BY

NOTE 1: Do not scale drawing. This drawing is for general truck configuration only. All items and dimensions shown are approximate and may vary with final production. The drawing may not provide illustration for all items in the specification. In all situations where the drawing may contradict the specifications, the specifications shall prevail. This drawing and all data herein are provided as confidential materials and shall not be reproduced without written consent of the manufacturer.

NOTE 2: Chassis frame height will change due to axle characteristics, loading and tire dimensions which will effect the overall height dimension shown. Any overall height restrictions should take this into consideration and allow approximately 2-3 inches of tolerance.





**SVI**  
FORT COLLINS COLORADO

**SVI FIRE & RESCUE TRUCKS**  
3842 REDMAN DRIVE, FORT COLLINS, CO 80524 PHONE 970-297-7100, FAX 970-297-7099

**WINNIPEG FIRE PARAMEDIC SERVICES**

BODY SIZE: <b>30' BODY</b>	UNIT TYPE: <b>COMMAND</b>
BODY MATERIAL: <b>3/16" ALUMINUM</b>	TRUCK NO: <b>SVI #825</b>
CHASSIS TYPE: <b>INTERNATIONAL</b>	WHEELBASE: <b>SEE DWG</b>
<b>---</b>	CAB TO AXLE: <b>SEE DWG</b>
<b>FLAT</b>	OVERALL LENGTH (OAL): <b>SEE DWG</b>
<b>TWO DOOR</b>	OVERALL WIDTH (OAW): <b>SEE DWG</b>
	OVERALL HEIGHT (OAH): <b>SEE DWG</b>

DRAWN BY: **HJR**

DATE: **September 30, 2020**

SCALE: **1/4" = 1'-0"**

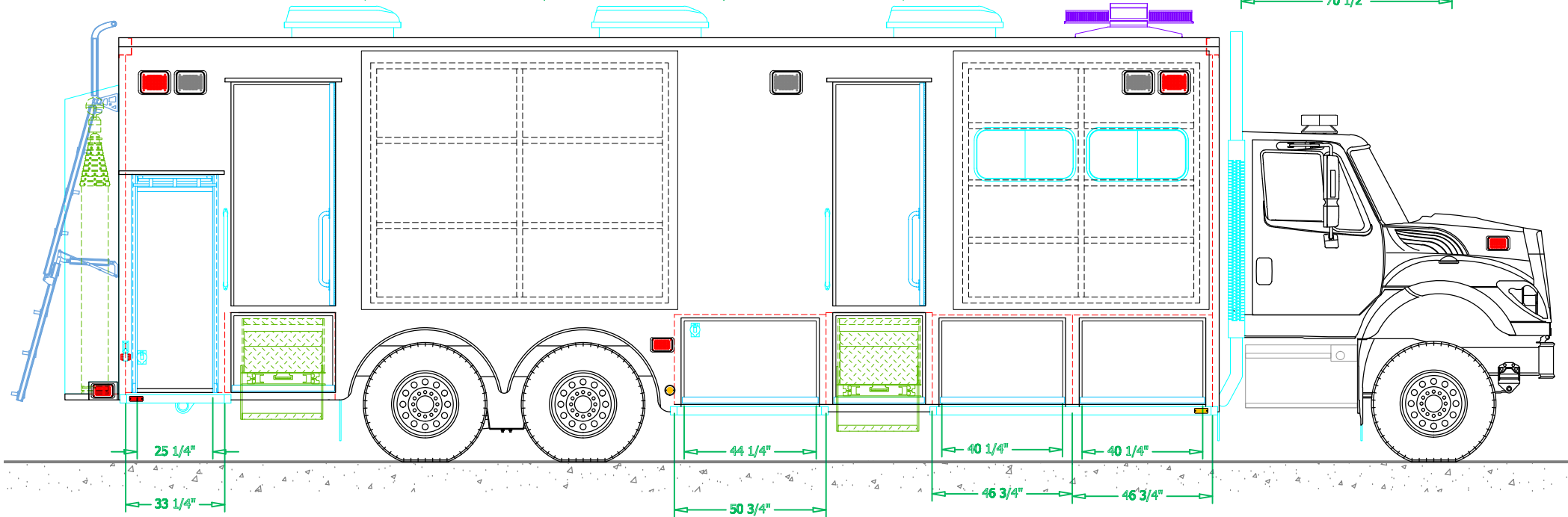
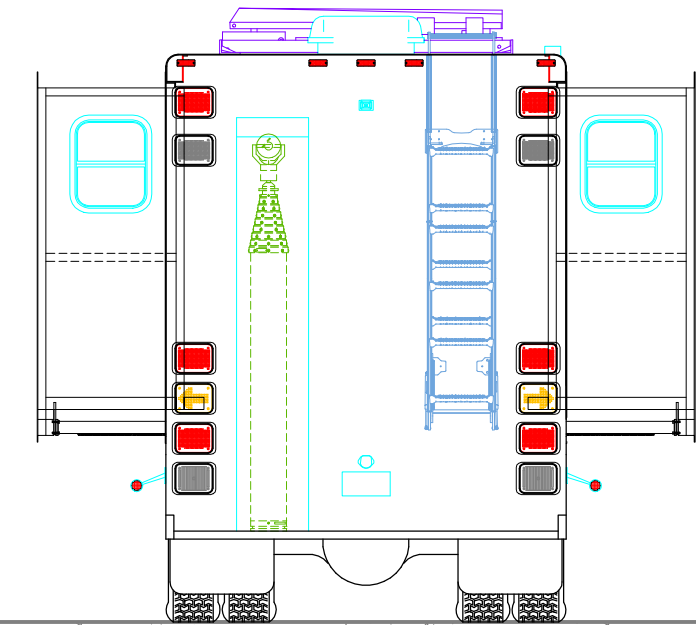
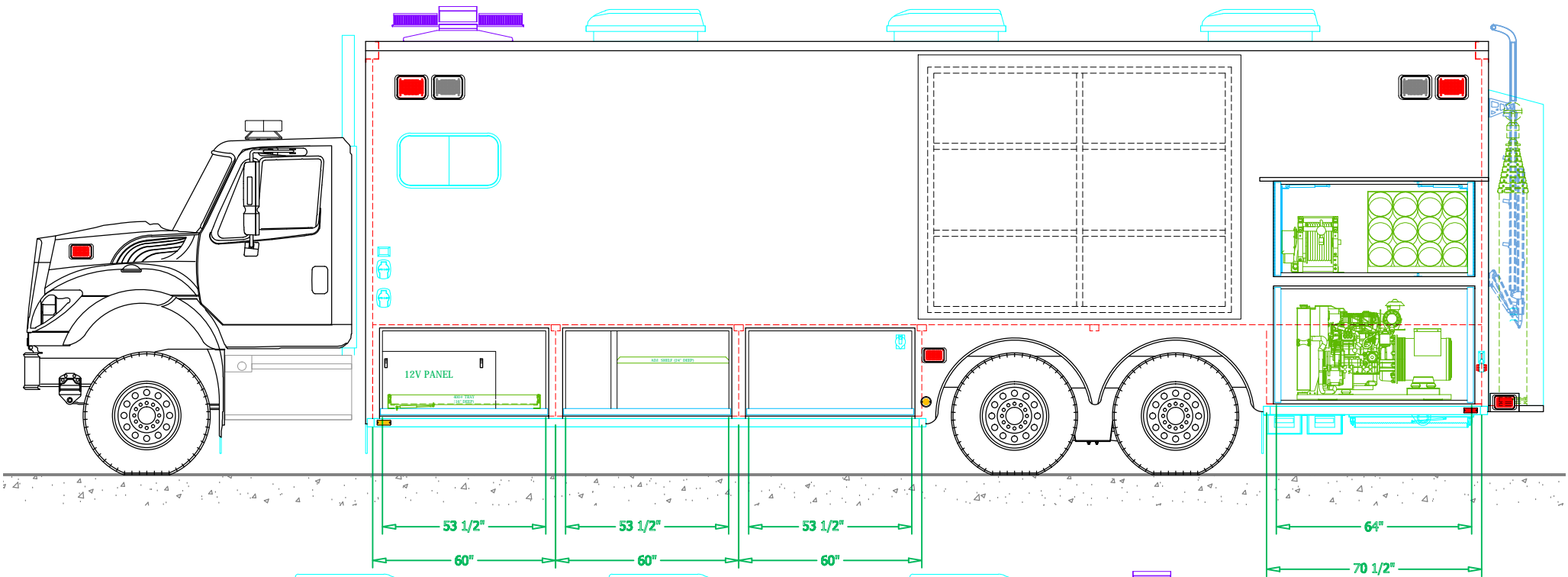
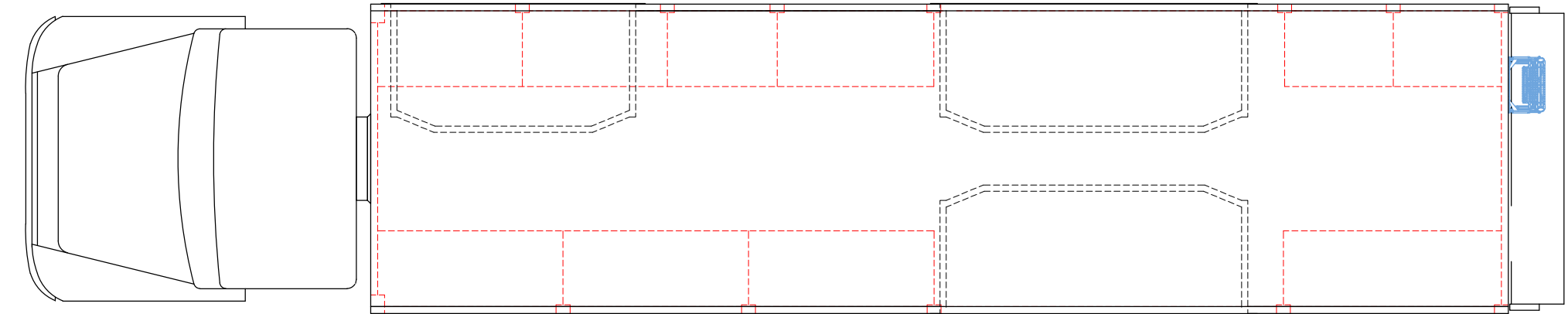
DRAWING NO: **Winnipeg\_MB\_fz\_CM\_PreCon1**

SHEET **1** OF **3**

PRELIMINARY DRAWING - FOR LAYOUT PURPOSES ONLY

REVISIONS			
REV	DESCRIPTION	DATE	BY

NOTE 1: Do not scale drawing. This drawing is for general truck configuration only. All items and dimensions shown are approximate and may vary with final production. The drawing may not provide illustration for all items in the specification. In all situations where the drawing may contradict the specifications, the specifications shall prevail. This drawing and all data herein are provided as confidential materials and shall not be reproduced without written consent of the manufacturer.



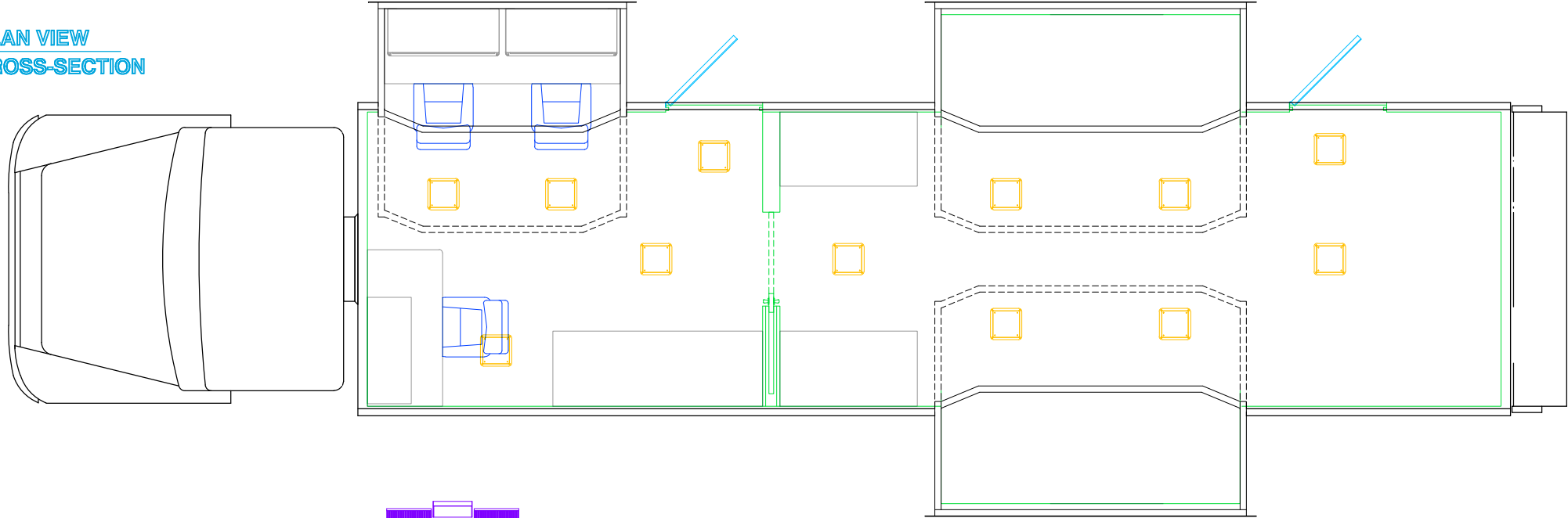
**SVI FIRE & RESCUE TRUCKS**  
3842 REDMAN DRIVE, FORT COLLINS, CO 80524 PHONE 970-297-7100, FAX 970-297-7099

**WINNIPEG FIRE PARAMEDIC SERVICES**

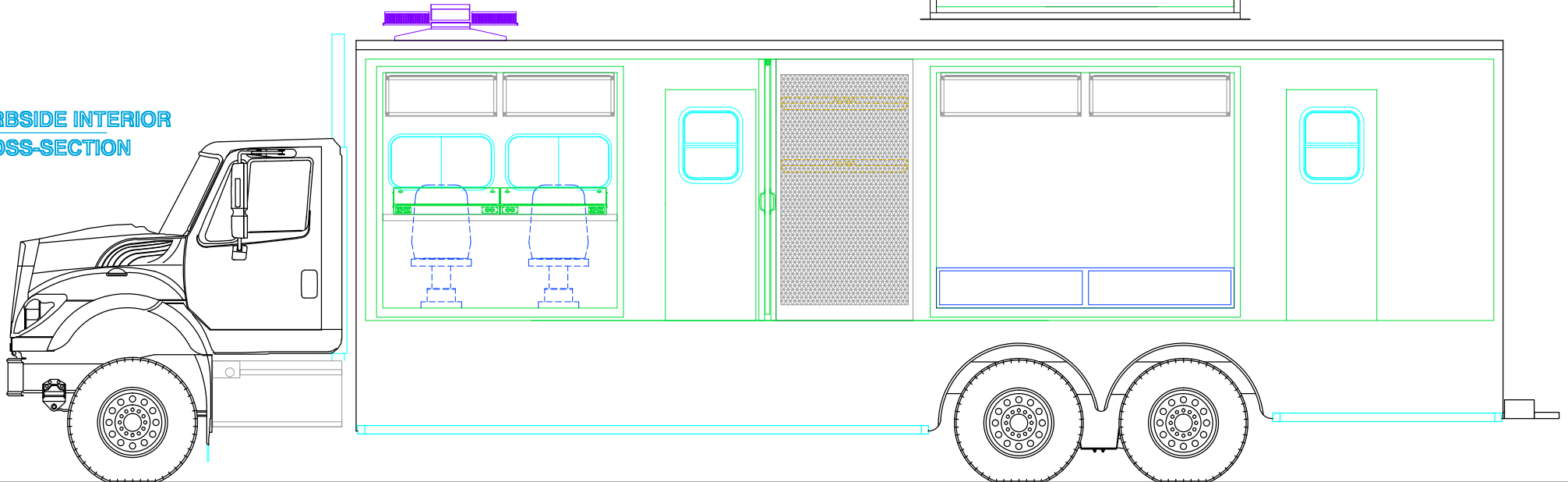
DRAWN BY: HDR	DATE: September 30, 2020	SCALE: 1/4" = 1'-0"
DRAWING NO: Winnipeg_M8_trz_CM_Prelim1		SHEET 2 OF 3

PRELIMINARY DRAWING - FOR LAYOUT PURPOSES ONLY

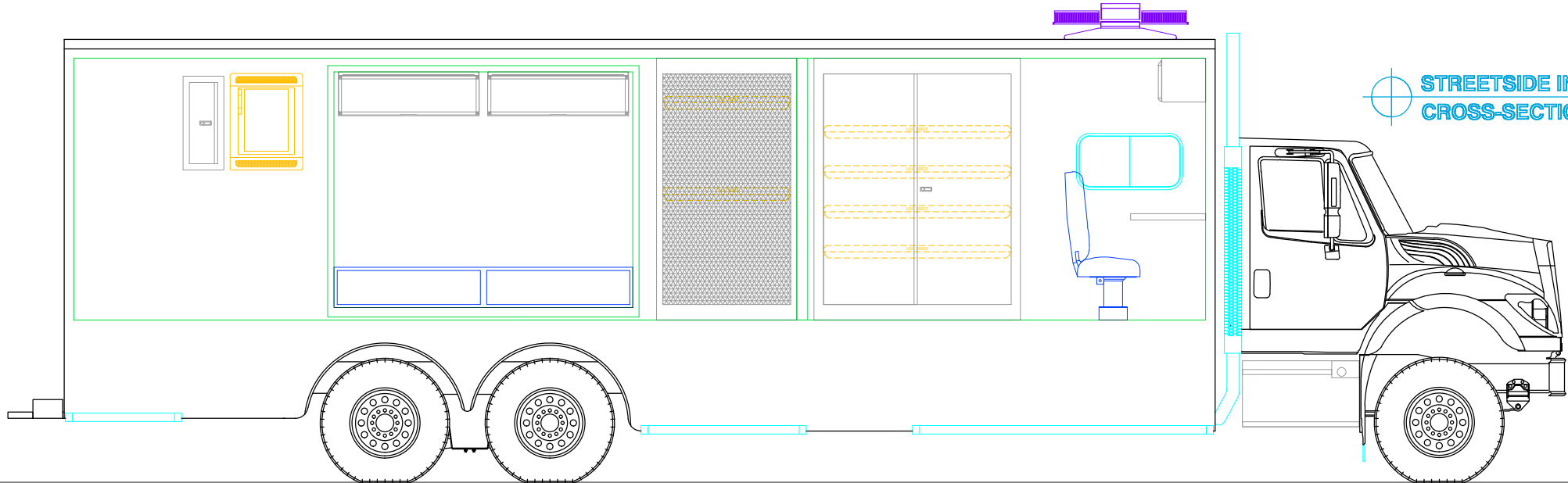
PLAN VIEW  
CROSS-SECTION



CURBSIDE INTERIOR  
CROSS-SECTION



STREETSIDE INTERIOR  
CROSS-SECTION



REVISIONS			
REV	DESCRIPTION	DATE	BY

NOTE 1: Do not scale drawing. This drawing is for general truck configuration only. All items and dimensions shown are approximate and may vary with final production. The drawing may not provide illustration for all items in the specification. In all situations where the drawing may contradict the specifications, the specifications shall prevail. This drawing and all data herein are provided as confidential materials and shall not be reproduced without written consent of the manufacturer.



SVI FIRE & RESCUE TRUCKS  
3842 REDMAN DRIVE, FORT COLLINS, CO 80524 PHONE 970-297-7100, FAX 970-297-7099

WINNIPEG FIRE PARAMEDIC  
SERVICES

DRAWN BY: HDR	DATE: September 30, 2020	SCALE: 1/4" = 1'-0"
DRAWING NO: Winnipeg_M8_1rz_CM_Prelim	SHEET 3 OF 3	