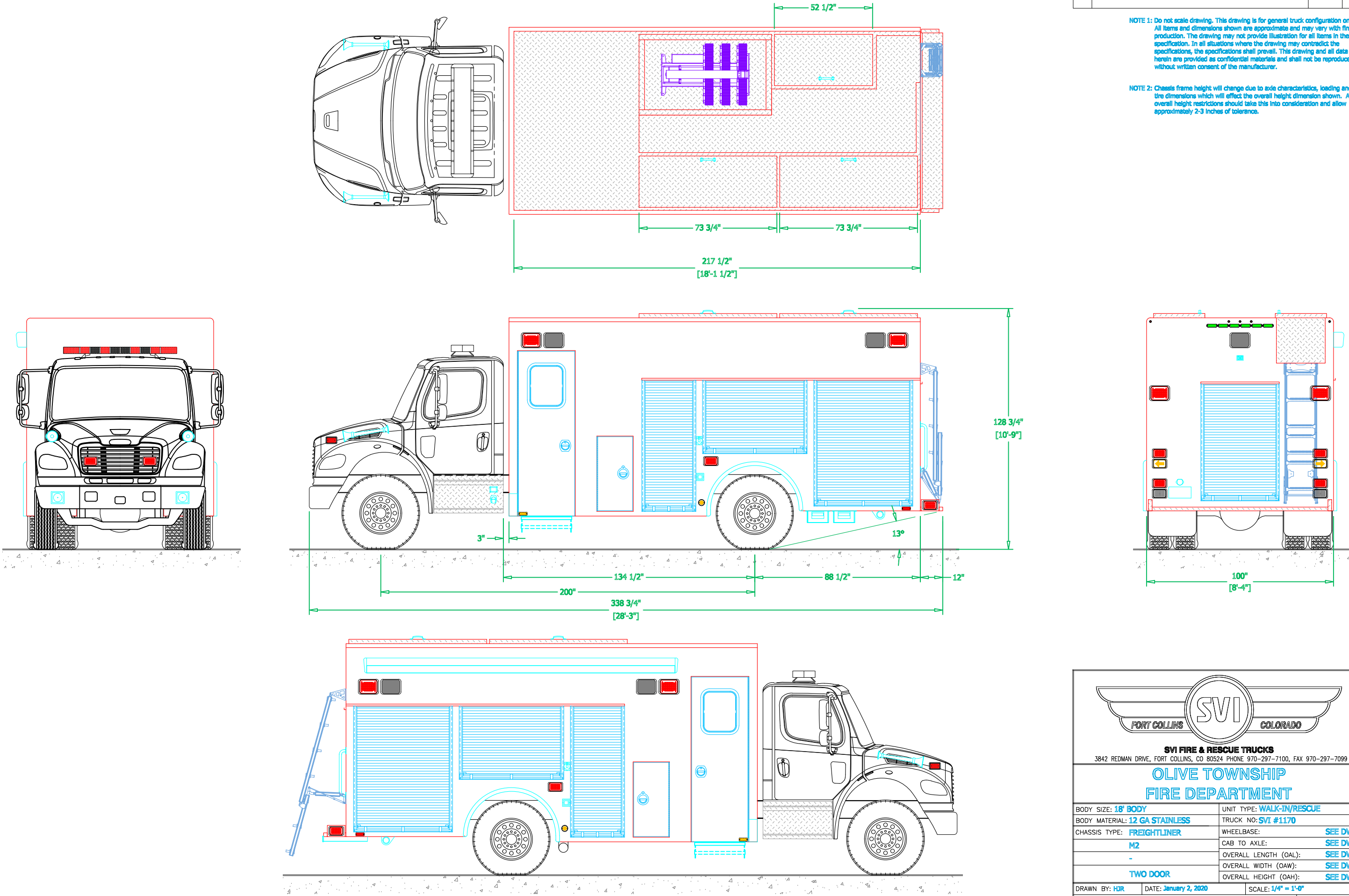


PRELIMINARY DRAWING - FOR LAYOUT PURPOSES ONLY

REVISIONS			
REV	DESCRIPTION	DATE	BY

NOTE 1: Do not scale drawing. This drawing is for general truck configuration only. All items and dimensions shown are approximate and may vary with final production. The drawing may not provide illustration for all items in the specification. In all situations where the drawing may contradict the specifications, the specifications shall prevail. This drawing and all data herein are provided as confidential materials and shall not be reproduced without written consent of the manufacturer.

NOTE 2: Chassis frame height will change due to axle characteristics, loading and tire dimensions which will effect the overall height dimension shown. Any overall height restrictions should take this into consideration and allow approximately 2-3 inches of tolerance.



**SVI FIRE & RESCUE TRUCKS**  
3842 REDMAN DRIVE, FORT COLLINS, CO 80524 PHONE 970-297-7100, FAX 970-297-7099

**OLIVE TOWNSHIP  
FIRE DEPARTMENT**

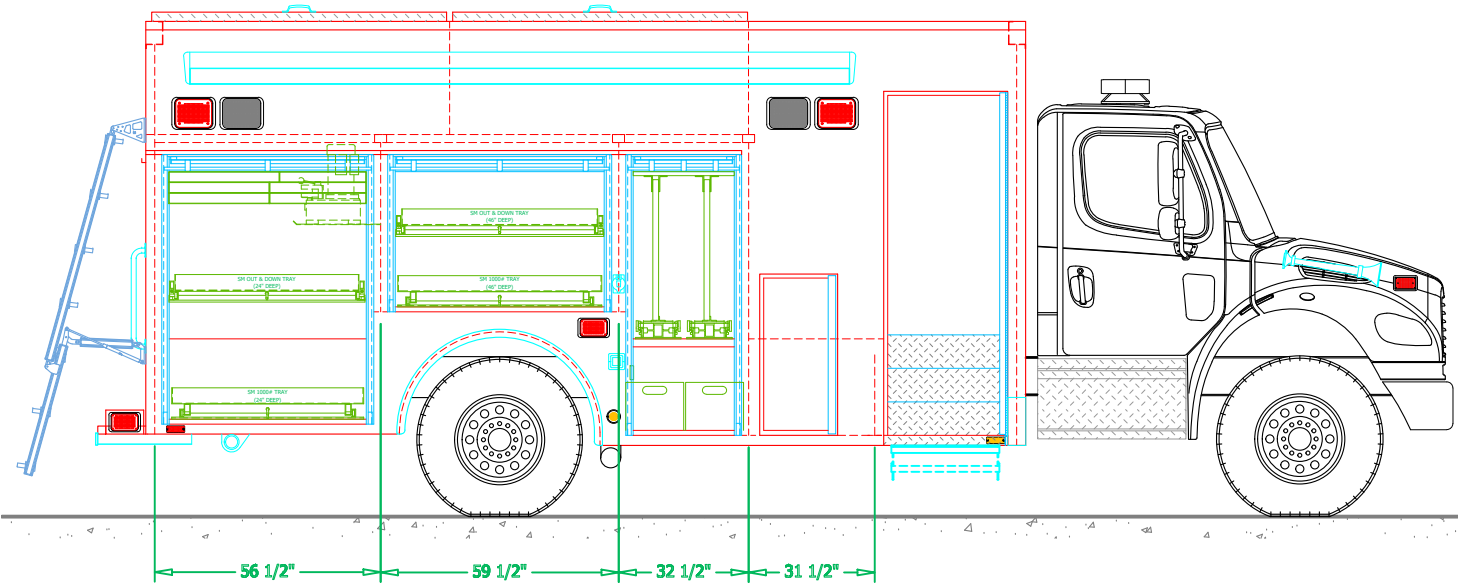
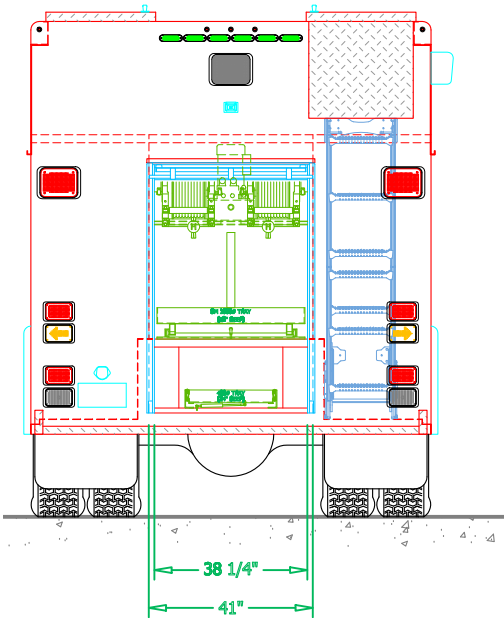
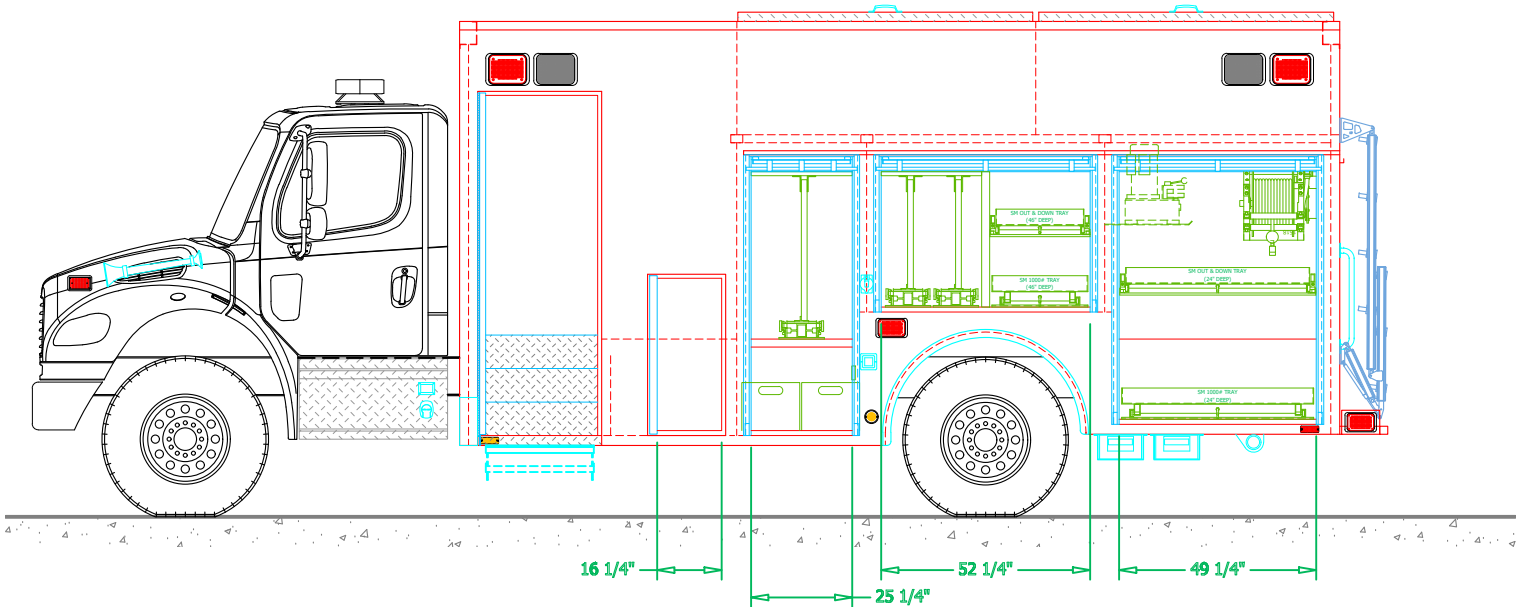
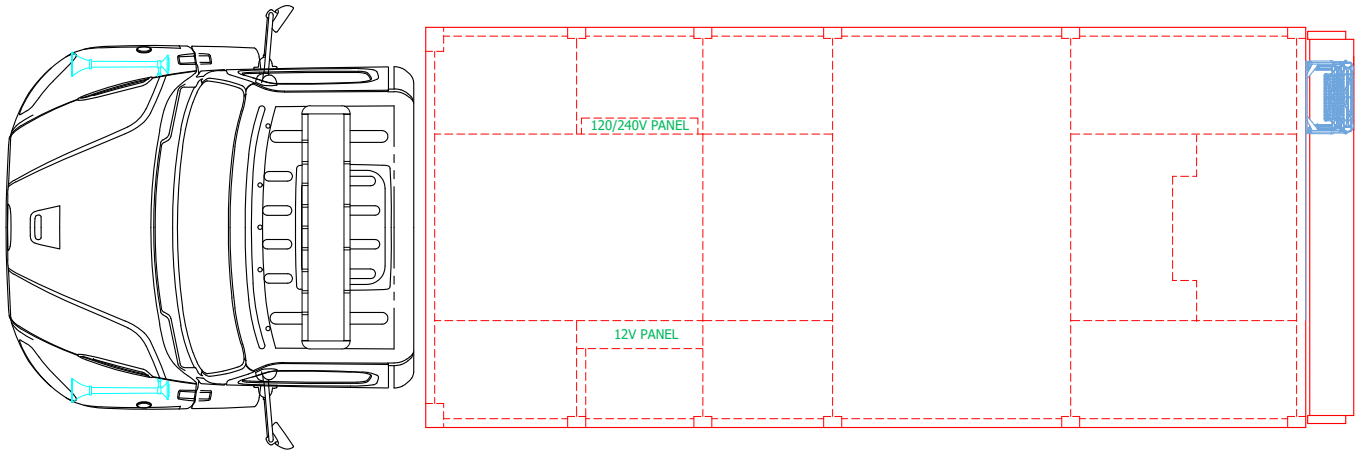
BODY SIZE: <b>18' BODY</b>	UNIT TYPE: <b>WALK-IN/RESCUE</b>
BODY MATERIAL: <b>12 GA STAINLESS</b>	TRUCK NO: <b>SVI #1170</b>
CHASSIS TYPE: <b>FREIGHTLINER</b>	WHEELBASE: <b>SEE DWG</b>
<b>M2</b>	CAB TO AXLE: <b>SEE DWG</b>
<b>-</b>	OVERALL LENGTH (OAL): <b>SEE DWG</b>
<b>TWO DOOR</b>	OVERALL WIDTH (OAW): <b>SEE DWG</b>
	OVERALL HEIGHT (OAH): <b>SEE DWG</b>

DRAWN BY: <b>HJR</b>	DATE: <b>January 2, 2020</b>	SCALE: <b>1/4" = 1'-0"</b>
DRAWING NO: <b>OliveTwp MI w/ Prelim5</b>		SHEET <b>1</b> OF <b>3</b>

PRELIMINARY DRAWING - FOR LAYOUT PURPOSES ONLY

REVISIONS			
REV	DESCRIPTION	DATE	BY

NOTE 1: Do not scale drawing. This drawing is for general truck configuration only. All items and dimensions shown are approximate and may vary with final production. The drawing may not provide illustration for all items in the specification. In all situations where the drawing may contradict the specifications, the specifications shall prevail. This drawing and all data herein are provided as confidential materials and shall not be reproduced without written consent of the manufacturer.



**SVI FIRE & RESCUE TRUCKS**  
3842 REDMAN DRIVE, FORT COLLINS, CO 80524 PHONE 970-297-7100, FAX 970-297-7099

**OLIVE TOWNSHIP  
FIRE DEPARTMENT**

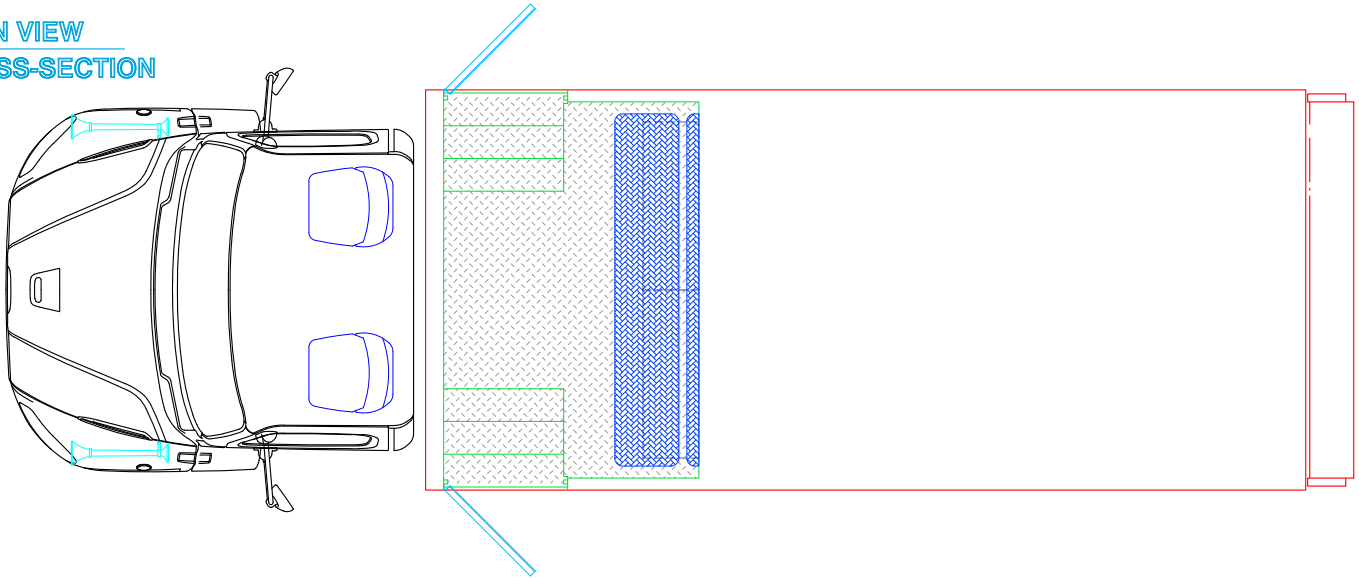
DRAWN BY: HDR	DATE: January 2, 2020	SCALE: 1/4" = 1'-0"
DRAWING NO: OliveTwp MI w/ Prelims		SHEET 2 OF 3

PRELIMINARY DRAWING - FOR LAYOUT PURPOSES ONLY

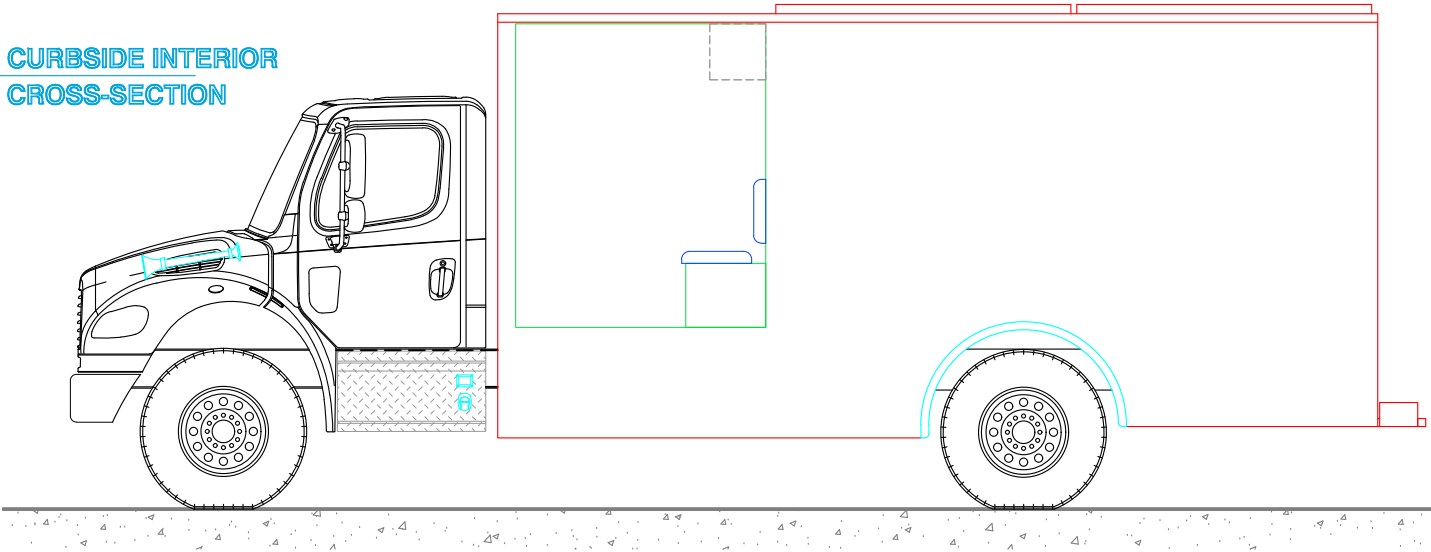
REVISIONS			
REV	DESCRIPTION	DATE	BY

NOTE 1: Do not scale drawing. This drawing is for general truck configuration only. All items and dimensions shown are approximate and may vary with final production. The drawing may not provide illustration for all items in the specification. In all situations where the drawing may contradict the specifications, the specifications shall prevail. This drawing and all data herein are provided as confidential materials and shall not be reproduced without written consent of the manufacturer.

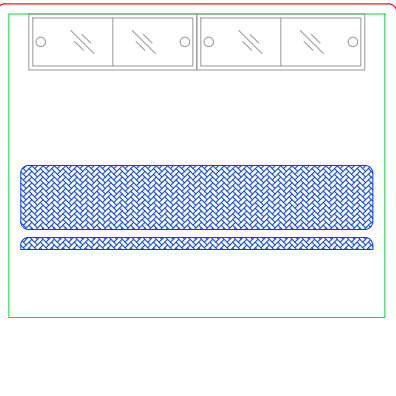
PLAN VIEW  
CROSS-SECTION



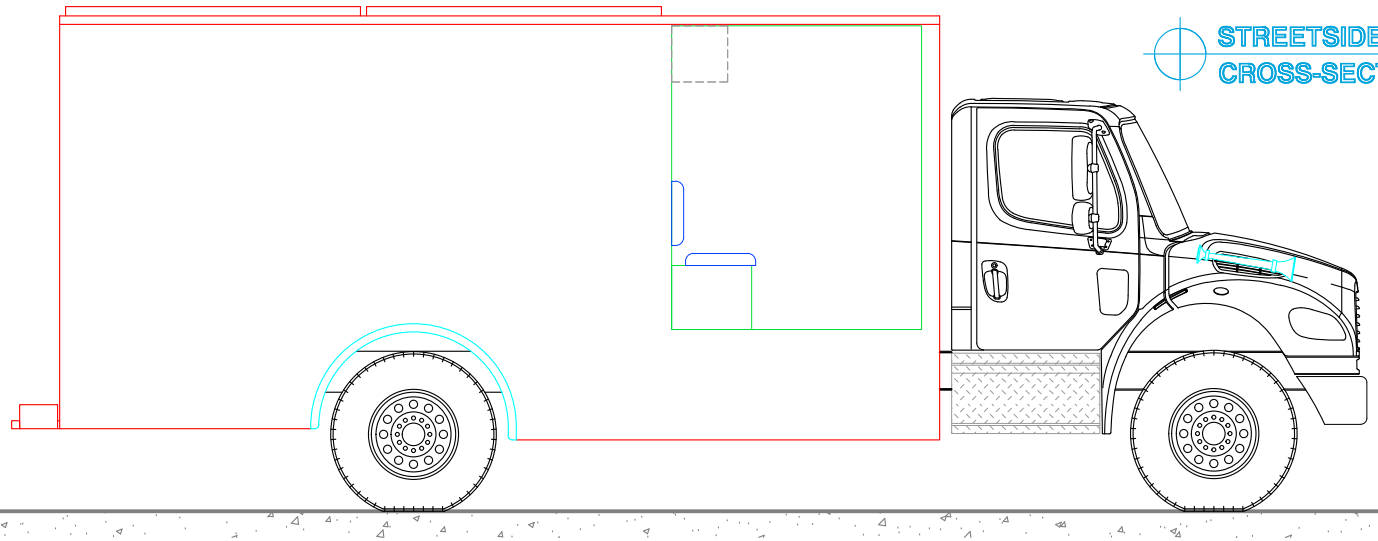
CURBSIDE INTERIOR  
CROSS-SECTION




REAR VIEW  
CROSS-SECTION



STREETSIDE INTERIOR  
CROSS-SECTION





**SVI FIRE & RESCUE TRUCKS**  
3842 REDMAN DRIVE, FORT COLLINS, CO 80524 PHONE 970-297-7100, FAX 970-297-7099

**OLIVE TOWNSHIP  
FIRE DEPARTMENT**

DRAWN BY: HDR	DATE: January 2, 2020	SCALE: 1/4" = 1'-0"
DRAWING NO: OliveTwp MI w/ Prelims		SHEET 3 OF 3