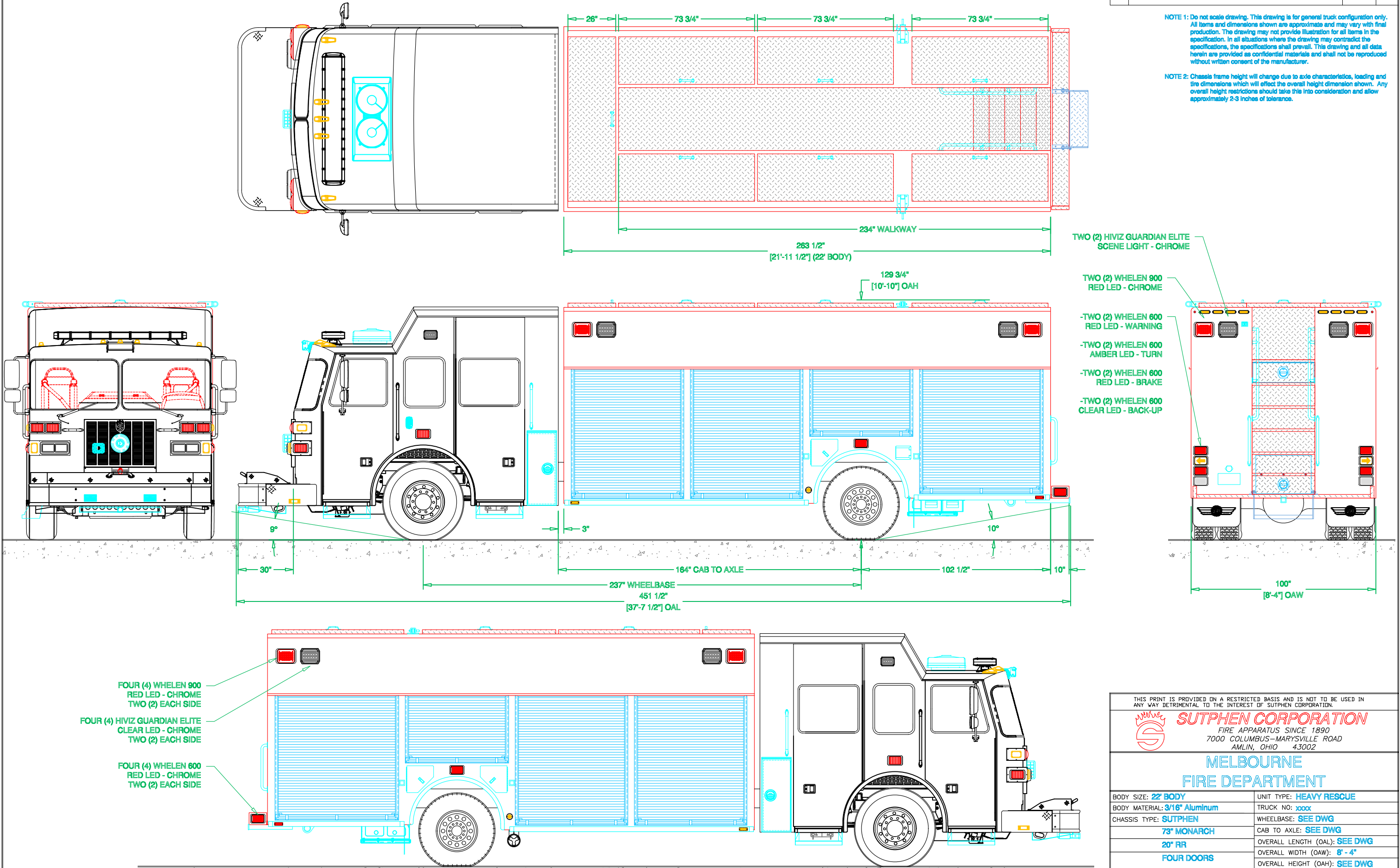



PRELIMINARY DRAWING - FOR LAYOUT PURPOSES ONLY

REVISIONS			
REV	DESCRIPTION	DATE	BY

NOTE 1: Do not scale drawing. This drawing is for general truck configuration only. All items and dimensions shown are approximate and may vary with final production. The drawing may not provide illustration for all items in the specification. In all situations where the drawing may contradict the specifications, the specifications shall prevail. This drawing and all data herein are provided as confidential materials and shall not be reproduced without written consent of the manufacturer.

NOTE 2: Chassis frame height will change due to axle characteristics, loading and tire dimensions which will effect the overall height dimension shown. Any overall height restrictions should take this into consideration and allow approximately 2-3 inches of tolerance.

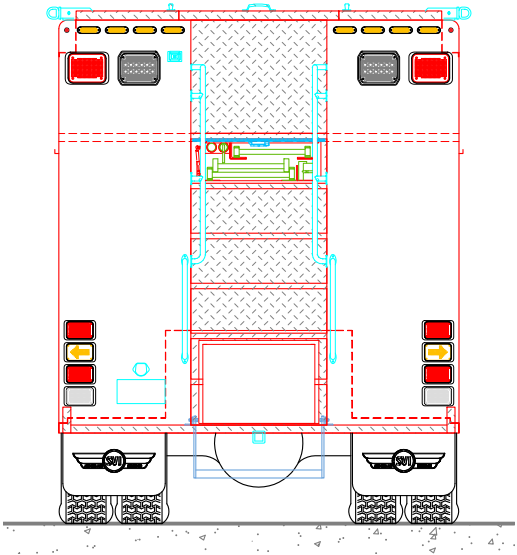
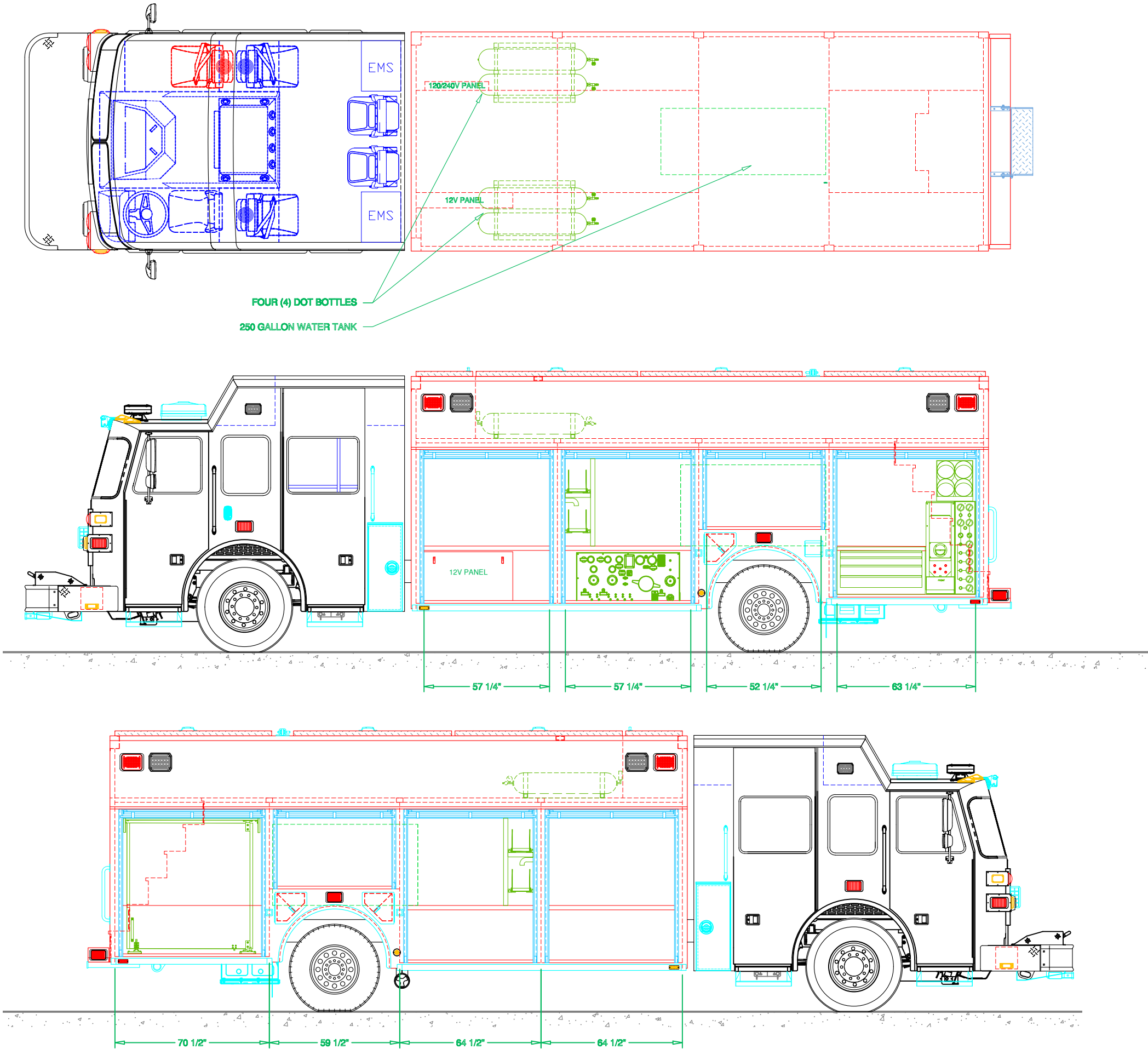



THIS PRINT IS PROVIDED ON A RESTRICTED BASIS AND IS NOT TO BE USED IN ANY WAY DETRIMENTAL TO THE INTEREST OF SUTPHEN CORPORATION.			
<div><div><div>SUTPHEN CORPORATION</div><div>FIRE APPARATUS SINCE 1890</div><div>7000 COLUMBUS-MARYSVILLE ROAD</div><div>AMLIN, OHIO 43002</div></div></div>			
MELBOURNE FIRE DEPARTMENT			
BODY SIZE: 22' BODY		UNIT TYPE: HEAVY RESCUE	
BODY MATERIAL: 3/16" Aluminum		TRUCK NO: xxxxx	
CHASSIS TYPE: SUTPHEN		WHEELBASE: SEE DWG	
73" MONARCH		CAB TO AXLE: SEE DWG	
20" RR		OVERALL LENGTH (OAL): SEE DWG	
FOUR DOORS		OVERALL WIDTH (OAW): 8' - 4"	
		OVERALL HEIGHT (OAH): SEE DWG	
DRAWN BY: KP		DATE: September 28, 2023	SCALE: 1/4" = 1'-0"
DRAWING NO: Melbourne_FL_hr22_PreCon1		SHEET 1 OF 2	

PRELIMINARY DRAWING - FOR LAYOUT PURPOSES ONLY

REVISIONS			
REV	DESCRIPTION	DATE	BY

NOTE 1: Do not scale drawing. This drawing is for general truck configuration only. All items and dimensions shown are approximate and may vary with final production. The drawing may not provide illustration for all items in the specification. In all situations where the drawing may contradict the specifications, the specifications shall prevail. This drawing and all data herein are provided as confidential materials and shall not be reproduced without written consent of the manufacturer.



THIS PRINT IS PROVIDED ON A RESTRICTED BASIS AND IS NOT TO BE USED IN ANY WAY DETRIMENTAL TO THE INTEREST OF SUTPHEN CORPORATION.			
<div><div>SUTPHEN CORPORATION FIRE APPARATUS SINCE 1890 7000 COLUMBUS-MARYSVILLE ROAD AMLIN, OHIO 43002</div></div>			
<div>MELBOURNE FIRE DEPARTMENT</div>			
BODY SIZE: 22' BODY		UNIT TYPE: HEAVY RESCUE	
BODY MATERIAL: 3/16" Aluminum		TRUCK NO: xxxx	
CHASSIS TYPE: SUTPHEN		WHEELBASE: SEE DWG	
73" MONARCH		CAB TO AXLE: SEE DWG	
20" RR		OVERALL LENGTH (OAL): SEE DWG	
FOUR DOORS		OVERALL WIDTH (OAW): 8' - 4"	
		OVERALL HEIGHT (OAH): SEE DWG	
DRAWN BY: KP		DATE: September 28, 2023	SCALE: 1/4" = 1'-0"
DRAWING NO: Melbourne_FL_hr22_PreCon1		SHEET 2 OF 2	