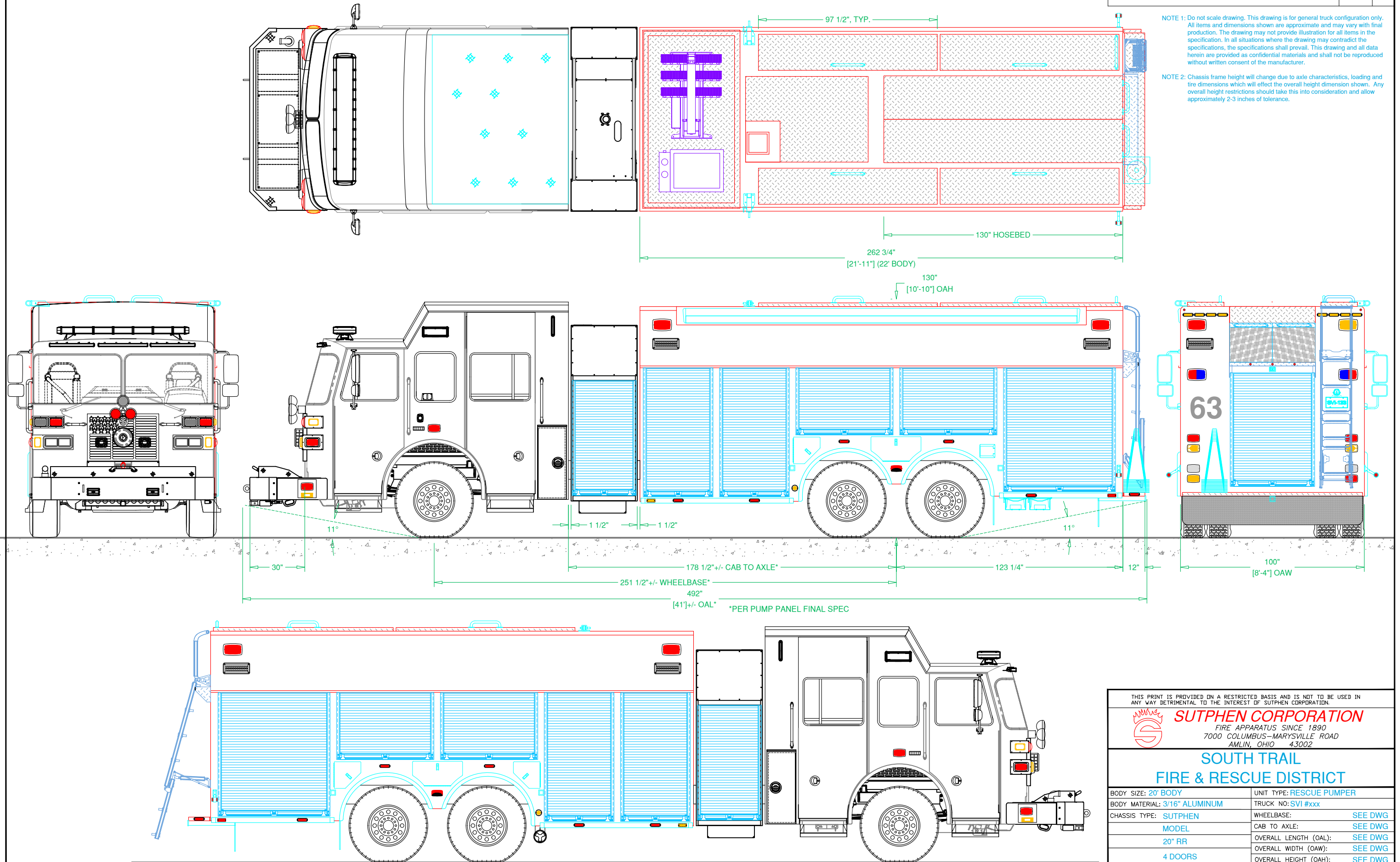


PRELIMINARY DRAWING - FOR LAYOUT PURPOSES ONLY

REVISIONS			
REV	DESCRIPTION	DATE	BY

NOTE 1: Do not scale drawing. This drawing is for general truck configuration only. All items and dimensions shown are approximate and may vary with final production. The drawing may not provide illustration for all items in the specification. In all situations where the drawing may contradict the specifications, the specifications shall prevail. This drawing and all data herein are provided as confidential materials and shall not be reproduced without written consent of the manufacturer.

NOTE 2: Chassis frame height will change due to axle characteristics, loading and tire dimensions which will effect the overall height dimension shown. Any overall height restrictions should take this into consideration and allow approximately 2-3 inches of tolerance.



THIS PRINT IS PROVIDED ON A RESTRICTED BASIS AND IS NOT TO BE USED IN ANY WAY DETRIMENTAL TO THE INTEREST OF SUTPHEN CORPORATION.

**SUTPHEN CORPORATION**  
 FIRE APPARATUS SINCE 1890  
 7000 COLUMBUS-MARYSVILLE ROAD  
 AMLIN, OHIO 43002

**SOUTH TRAIL  
 FIRE & RESCUE DISTRICT**

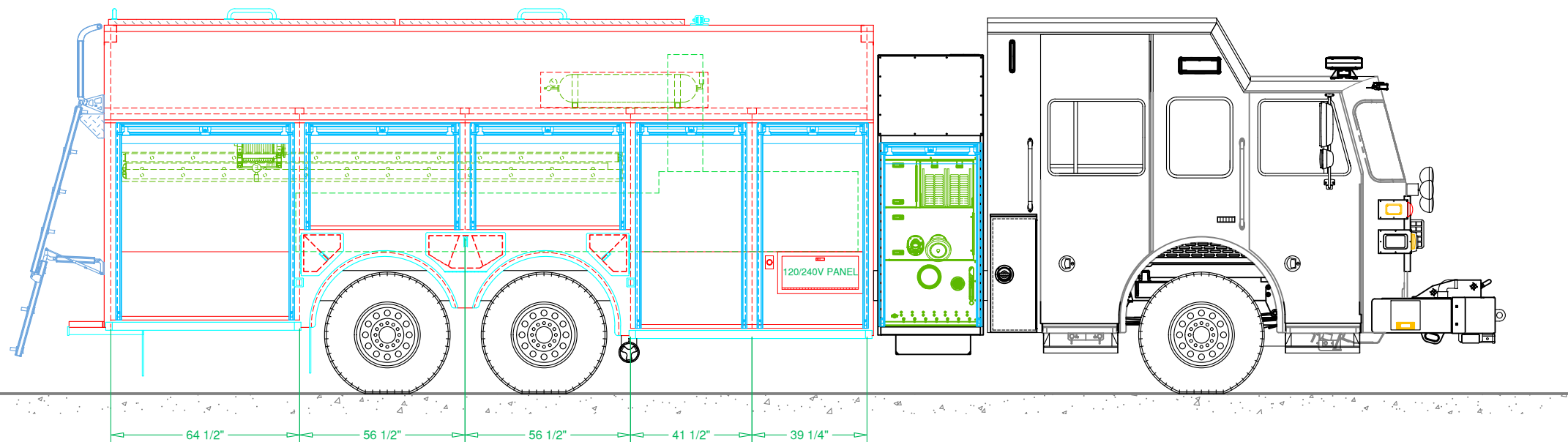
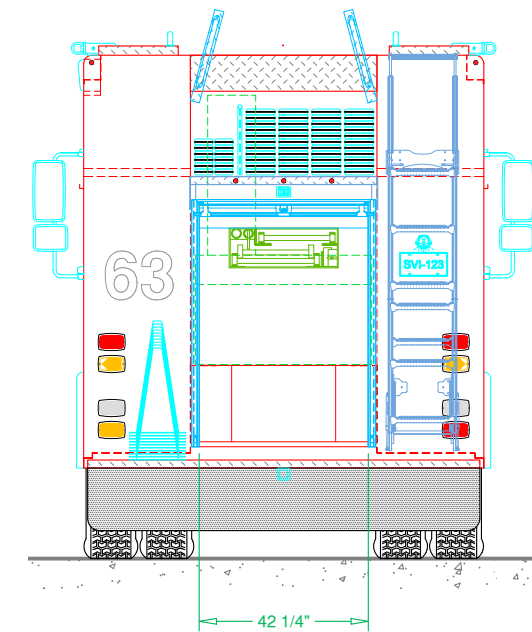
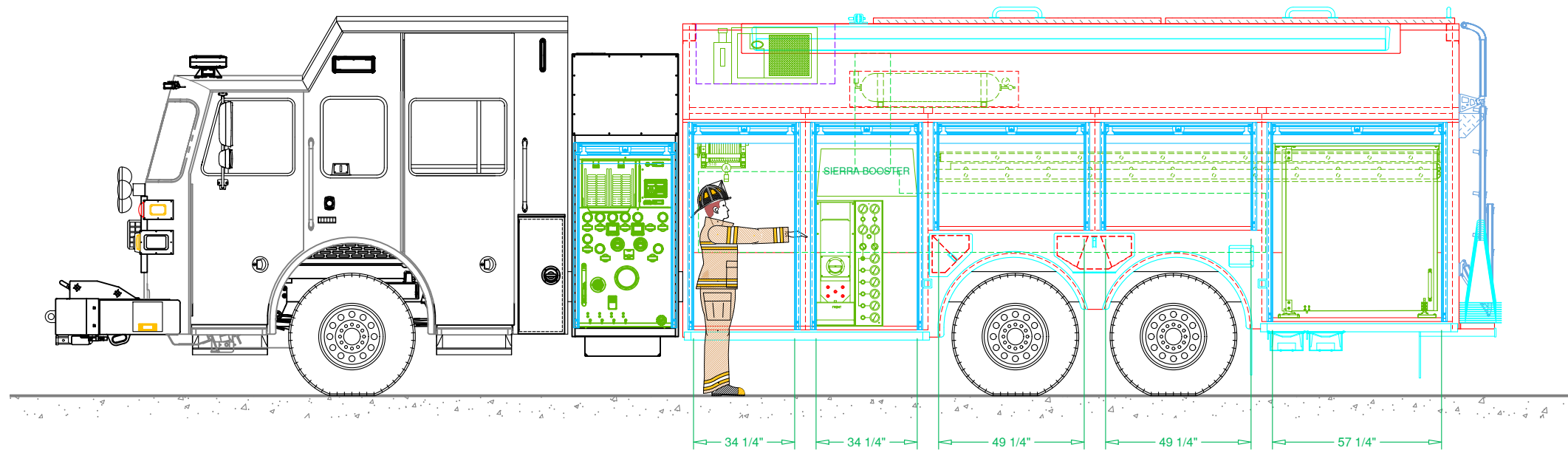
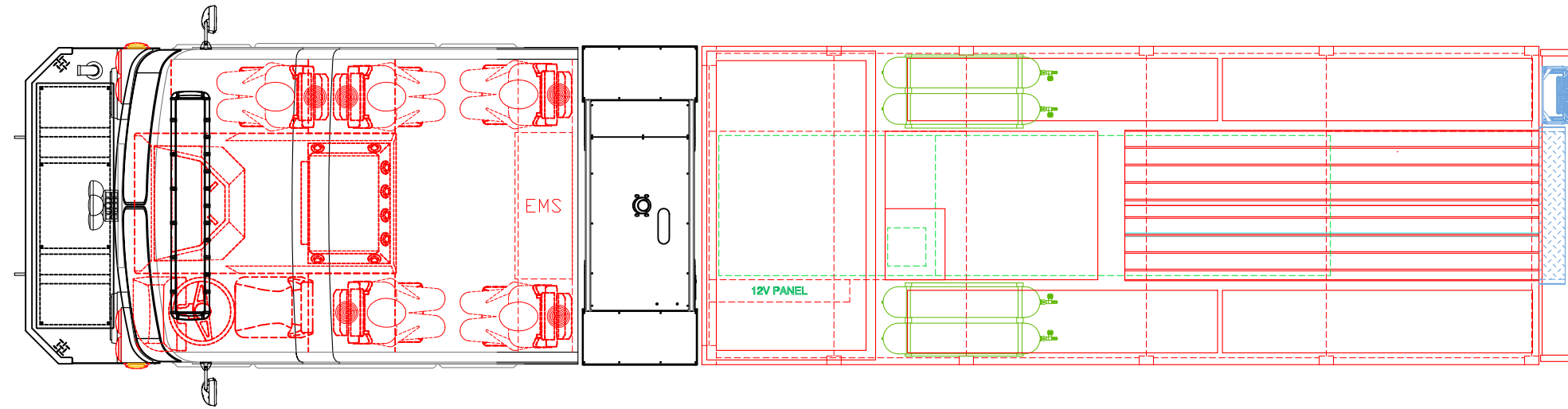
BODY SIZE: 20' BODY	UNIT TYPE: RESCUE PUMPER
BODY MATERIAL: 3/16" ALUMINUM	TRUCK NO: SVI #xxx
CHASSIS TYPE: SUTPHEN	WHEELBASE: SEE DWG
MODEL	CAB TO AXLE: SEE DWG
20" RR	OVERALL LENGTH (OAL): SEE DWG
4 DOORS	OVERALL WIDTH (OAW): SEE DWG
	OVERALL HEIGHT (OAH): SEE DWG

DRAWN BY: JOHN B DATE: May 9, 2024 SCALE: 1/4" = 1'-0"  
 DRAWING NO: SouthTrail\_FL\_PM-PreCont SHEET 1 OF 3

PRELIMINARY DRAWING - FOR LAYOUT PURPOSES ONLY

REVISIONS			
REV	DESCRIPTION	DATE	BY

NOTE 1: Do not scale drawing. This drawing is for general truck configuration only. All items and dimensions shown are approximate and may vary with final production. The drawing may not provide illustration for all items in the specification. In all situations where the drawing may contradict the specifications, the specifications shall prevail. This drawing and all data herein are provided as confidential materials and shall not be reproduced without written consent of the manufacturer.



THIS PRINT IS PROVIDED ON A RESTRICTED BASIS AND IS NOT TO BE USED IN ANY WAY DETRIMENTAL TO THE INTEREST OF SUTPHEN CORPORATION.

**SUTPHEN CORPORATION**  
 FIRE APPARATUS SINCE 1890  
 7000 COLUMBUS-MARYSVILLE ROAD  
 AMLIN, OHIO 43002

**SOUTH TRAIL  
 FIRE & RESCUE DISTRICT**

BODY SIZE: 20' BODY	UNIT TYPE: RESCUE PUMPER
BODY MATERIAL: 3/16" ALUMINUM	TRUCK NO: SVI #xxx
CHASSIS TYPE: SUTPHEN	WHEELBASE: SEE DWG
MODEL	CAB TO AXLE: SEE DWG
20" RR	OVERALL LENGTH (OAL): SEE DWG
4 DOORS	OVERALL WIDTH (OAW): SEE DWG
	OVERALL HEIGHT (OAH): SEE DWG

DRAWN BY: JOHNB    DATE: May 9, 2024    SCALE: 1/4" = 1'-0"  
 DRAWING NO: SouthTrail\_FL\_PM-PreCon1    SHEET 2 OF 3